



WC704-007
Alabaster



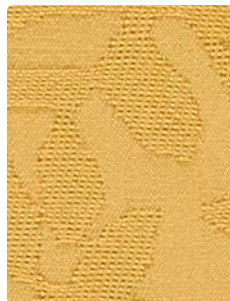
WC704-016
Aluminum



WC704-004
Indigo



WC704-000
Pumice



WC704-002
Topaz



WC704-014
Sky



WC704-003
Apple



WC704-006
Metal



WC704-009
Spice



WC704-005
Orchid



WC704-023
Eucalyptus



WC704-010
Graphite



WC704-019
Paprika



WC704-001
Currant



WC704-013
Sage

Application
Upholstery Seating

Content
63% Recycled Polyester,
37% Eco-Intelligent Polyester
(Antimony Free)

Width
54 inches / 137 cm

Abrasion (Wyzenbeek/Cotton Duck)
Exceeds 100,000 Double Rubs

Finish
Crypton® Green with Antimicrobial
Silver Ion Technology

Reduced Environmental Impact
GREENGUARD Gold Certified



TECHNICAL INFORMATION

Content: **63% Post-Consumer Recycled Polyester, 37% Eco-Intelligent Polyester (Antimony Free)**

Width: 54 inches / 137 cm

Weight: 16.5 oz./linear yard / 511.56 g/lm

Backing: **Crypton® Green**

Finish: **Crypton® Green** with Antimicrobial Silver Ion Technology

Approx. Repeat: 12.8 in/32.51 cm H, 10 in/25.40 cm V Non-Matching

Directional: Yes

Railroaded: No

PERFORMANCE

Surface Abrasion: Heavy Duty ASTM D4157
(Wyzenbeek/Cotton Duck)

Results

Exceeds 100,000 Double Rubs

Pilling Resistance ASTM D3511

Class 4

Colorfastness to Crocking AATCC 8

Dry: Grade 4 min / Wet: Grade 4 min

Colorfastness to Light AATCC 16

Grade 4.5 at 40 hours

FLAMMABILITY

California Technical Bulletin 117-2013

NFPA 260/UFAC Class 1

May comply with California Technical Bulletin 133 when combined with appropriate components.

REDUCED ENVIRONMENTAL IMPACT

This product is **GREENGUARD Gold Certified** for low chemical and particle emissions to UL standard UL 2818 and may contribute to LEED certification. For complete information visit mayerfabrics.com and UL.com/gg.

Antimony Free Heavy Metal Free



The Facts icon indicates that a textile has been evaluated based on the requirements of the multi-attribute sustainability standard NSF/ANSI 336 through an independent third-party certification body authorized by the Association for Contract Textiles.

CLEANING INFORMATION

C: Crypton Cleaning

BC: Bleach Cleanable – 1 part bleach, 9 parts water = 10% bleach, 90% water solution. Do not clean/disinfect fabric for longer than 10 minutes using the 10% bleach solution. Always rinse promptly with clean water after applying the bleach solution. Failure to do so will void any and all warranties.

ADDITIONAL INFORMATION

Custom Capabilities: All patterns can be custom colored. Minimum yardage applies.

Digital Swatch Card Color Matching: Due to color variations on different monitors and color printers, actual swatch colors may vary slightly. Please request a memo sample from Mayer Fabrics to ensure proper color representation.

Specifications: Specifications are correct at the time of printing. Current specifications are available on our website.



This fabric meets or exceeds these ACT performance guidelines. *Certification Marks owned by ACT®



LONDON – Approx. Repeat: 12.8 in/32.51 cm H, 10 in/25.40 cm V Non-Matching



MAYERFABRICS