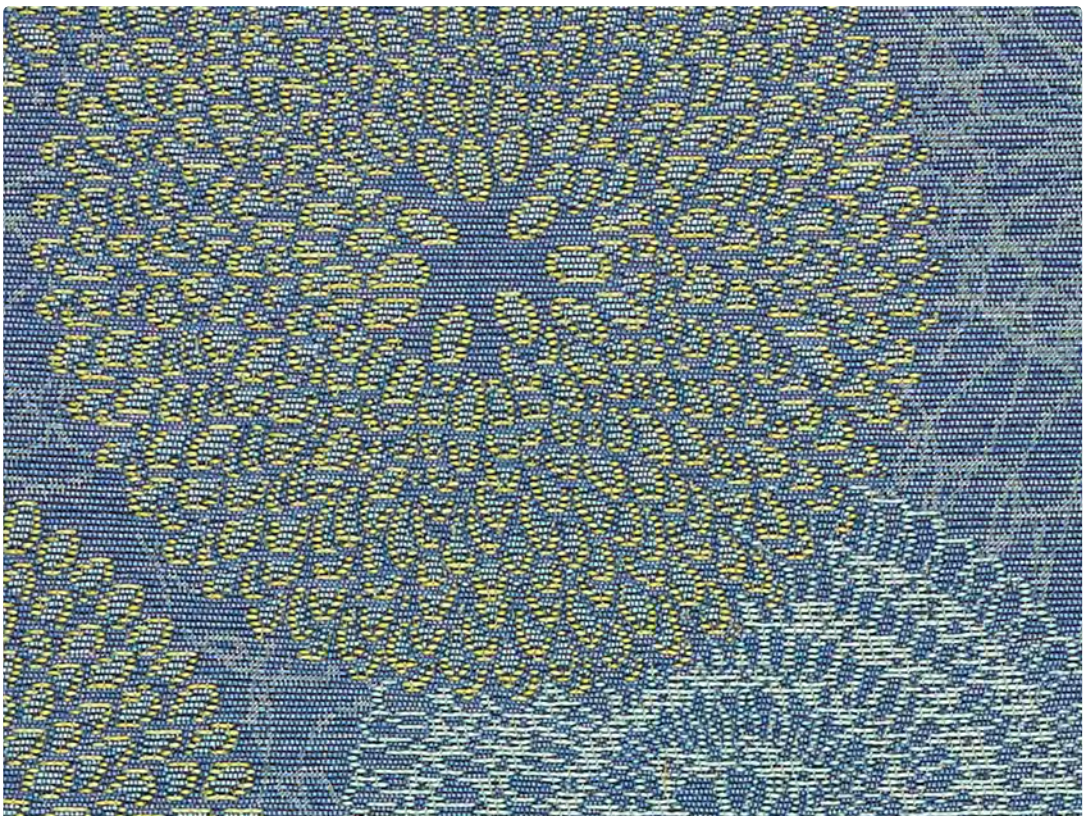


442-003
Moss

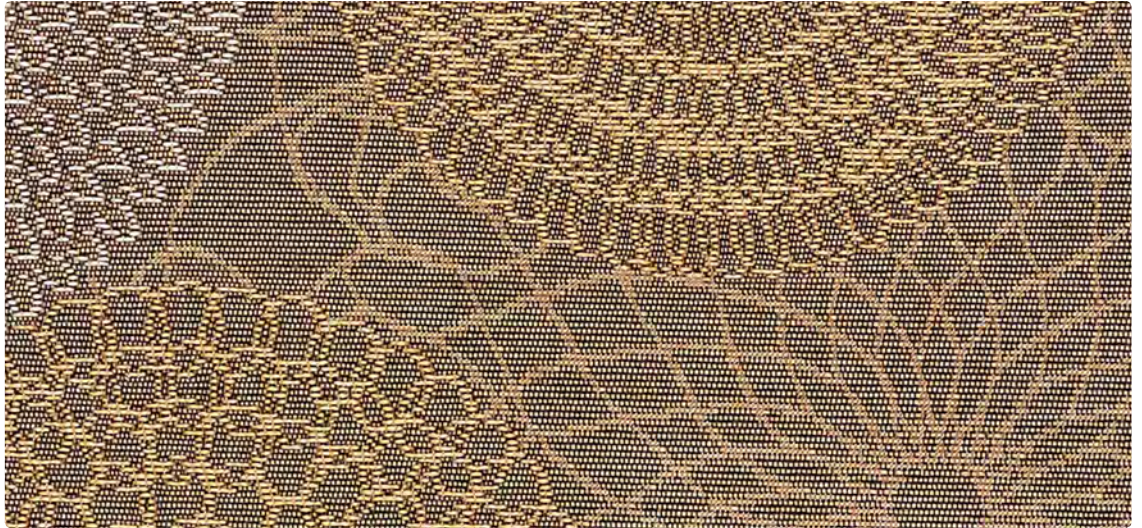


442-014
Sea

Upholstery Seating



442-007
Stone



442-000
Mocha



442-006
Metal

Application
Upholstery Seating

Content
100% Solution-Dyed
Recycled Nylon

Width
54 inches

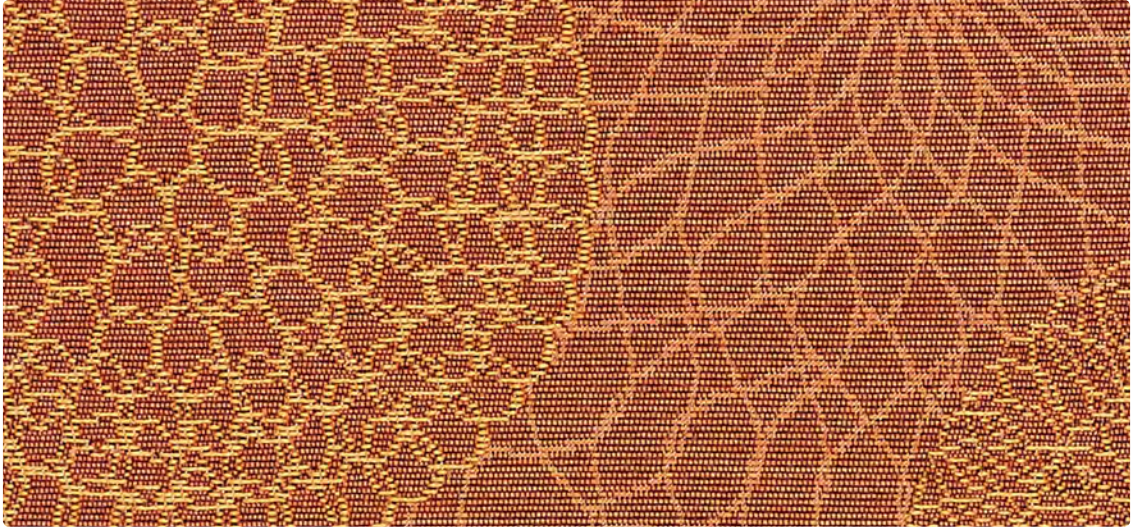
Abrasion (Wyzenbeek/Cotton Duck)
Exceeds 100,000 Double Rubs

Finish
Stain Repellent – PFOA Free

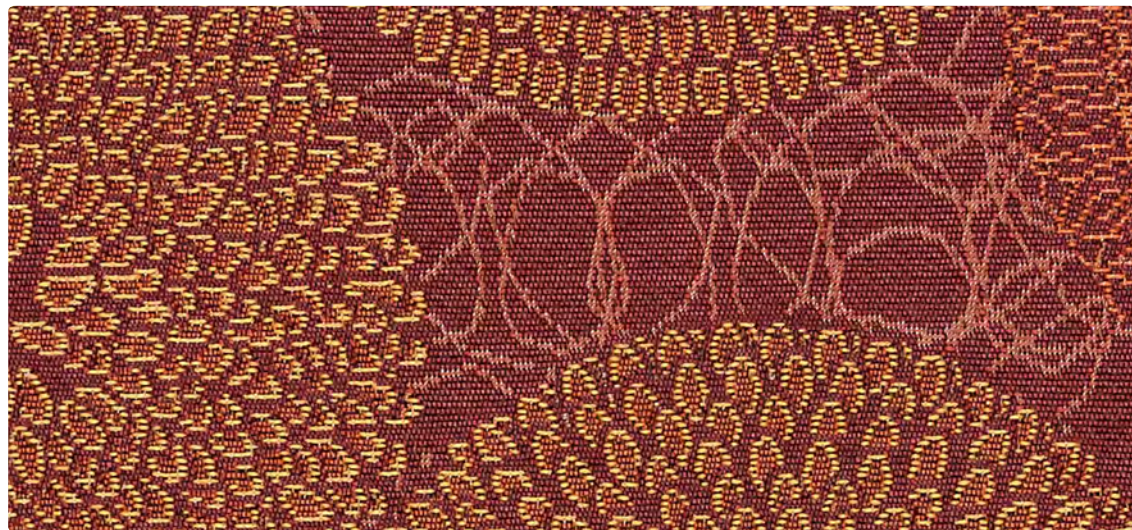
Reduced Environmental Impact
GREENGUARD Gold Certified

Eco-System[®]
Sustainable. Attainable at Mayer Fabrics.

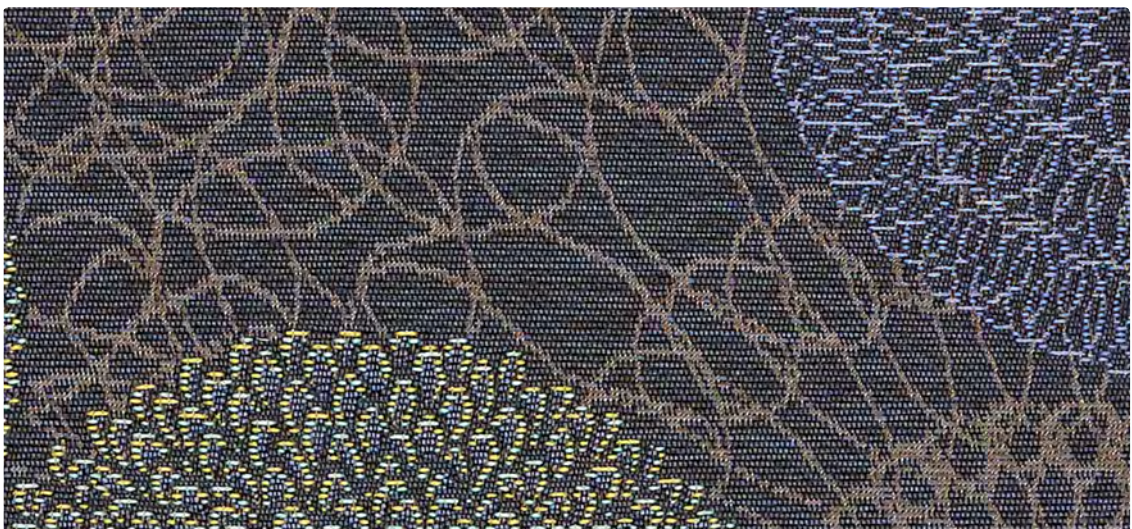
facts^{*}
Silver



442-009
Spice



442-001
Currant



442-004
Ink

TECHNICAL INFORMATION

Content: **100% Solution-Dyed Pre-Consumer Recycled Nylon**

Width: 54"

Backing: Acrylic

Approx. Repeat: 13.87" H, 14.5" V

Weight: 15.28 oz./linear yard

Finish: Stain Repellent – PFOA Free

Directional: Yes

Railroaded: No

PERFORMANCE

Surface Abrasion: Heavy Duty ASTM D 4157
(Wyzenbeek/Cotton Duck)

Pilling Resistance ASTM D 3511

Colorfastness to Crocking AATCC-8

Colorfastness to Light AATCC 16, Option 3

Results

Exceeds 100,000 Double Rubs

Class 5

Dry: Class 4 min / Wet: Class 4 min

Class 5 at 200 hours

FLAMMABILITY

California Technical Bulletin 117-2013

NFPA 260/UFAC Class 1

May comply with California Technical Bulletin 133 when combined with appropriate components.

REDUCED ENVIRONMENTAL IMPACT

This product is **GREENGUARD Gold Certified for low chemical and particle emissions to UL standard UL 2818 and may contribute to LEED certification. For complete information visit mayerfabrics.com and UL.com/gg.**



The Eco-System icon indicates 100% recycled content.



The Facts icon indicates that a textile has been evaluated based on the requirements of the multi-attribute sustainability standard NSF/ANSI 336 through an independent third-party certification body authorized by the Association for Contract Textiles.

CLEANING INFORMATION

WS: Water/Solvent Cleaner

BC: Bleach Cleanable – 1 part bleach, 9 parts water = 10% bleach, 90% water solution. Do not clean/disinfect fabric for longer than 10 minutes using the 10% bleach solution. Always rinse promptly with clean water after applying the bleach solution. Failure to do so will void any and all warranties.

ADDITIONAL INFORMATION

Custom Capabilities: All patterns can be custom colored. Minimum yardage applies.

Digital Swatch Card Color Matching: Due to color variations on different monitors and color printers, actual swatch colors may vary slightly. Please request a memo sample from Mayer Fabrics to ensure proper color representation.

Specifications: Specifications are correct at the time of printing. Current specifications are available on our website.



This fabric meets or exceeds these ACT performance guidelines.
Certification Marks owned by ACT



Water and Stain Repellent Finish



LOTUS – Approx. Repeat: 13.87" H, 14.5" V



MAYERFABRICS