

# REJUVENATE

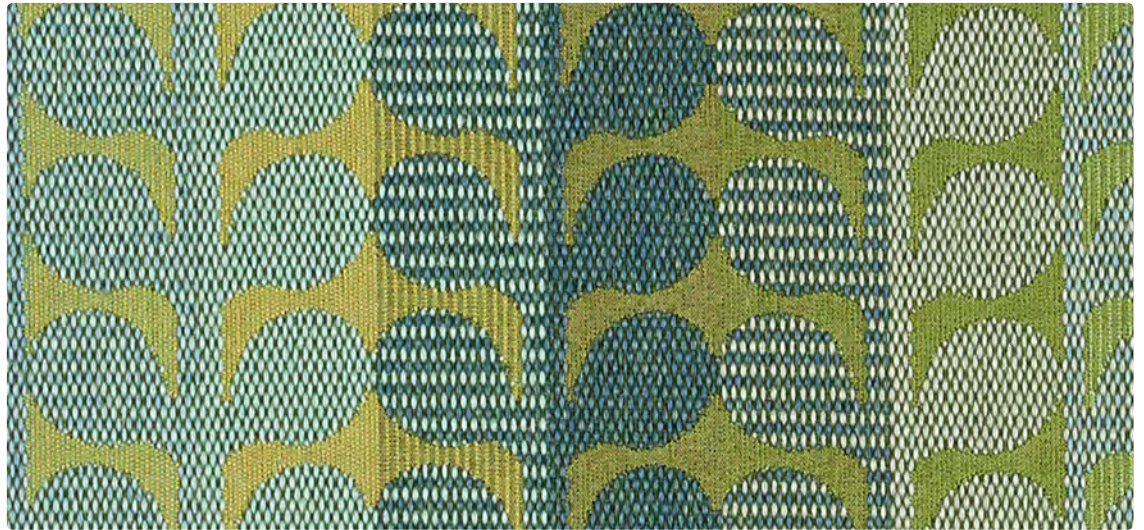


Upholstery Seating

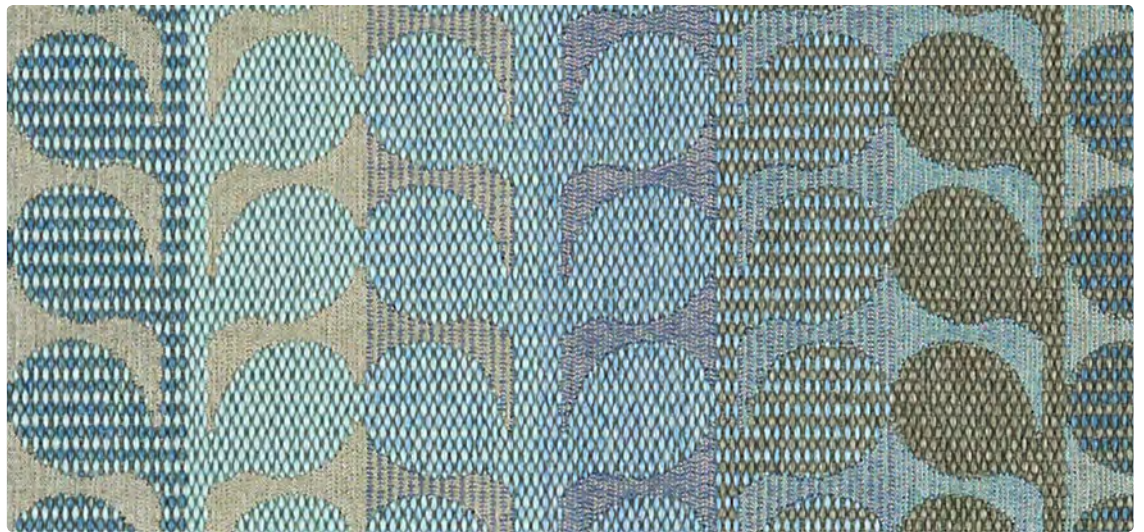


**MAYER**FABRICS

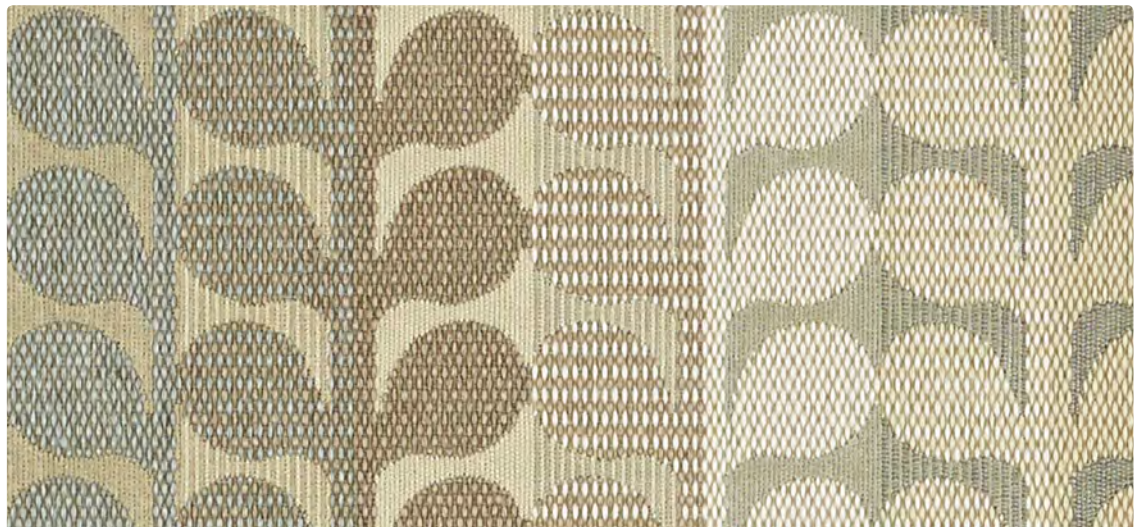
# Upholstery Seating



438-003  
Myrtle



438-004  
Sky



438-007  
Cement

Application  
Upholstery Seating

Content  
100% Solution-Dyed  
Recycled Nylon

Width  
54 inches

Abrasion (Wyzenbeek/Cotton Duck)  
Passes 147,000 Double Rubs

Finish  
Stain Repellent – PFOA &  
PFOC Free

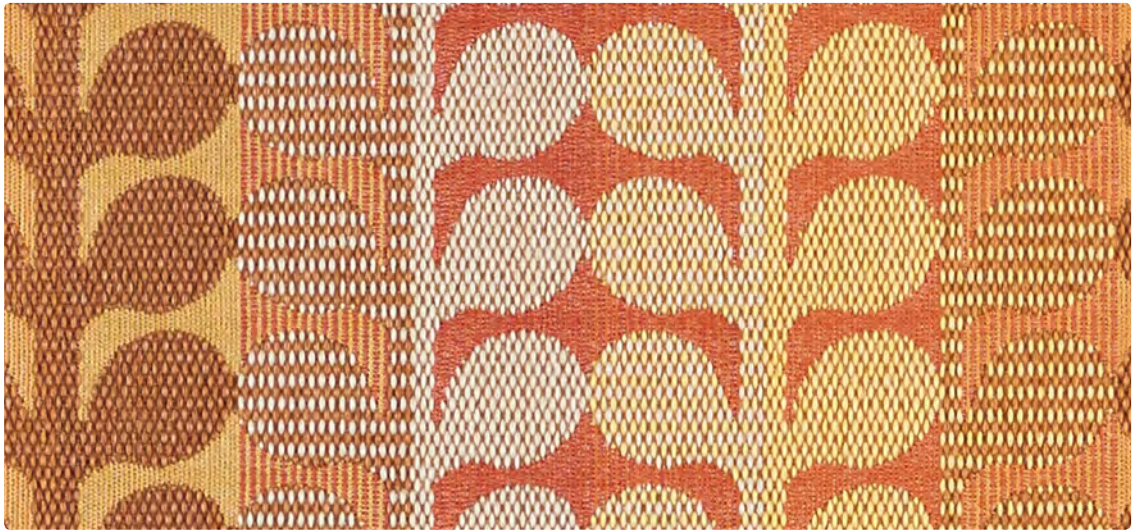
Reduced Environmental Impact  
GREENGUARD Gold Certified

Eco-System®  
Sustainable. Attainable at Mayer Fabrics.

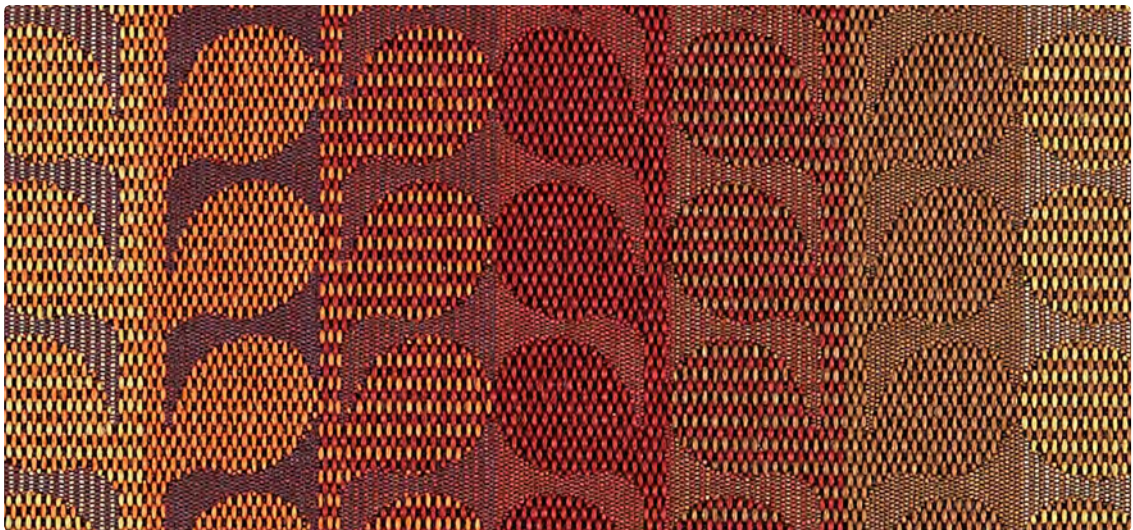
facts\*  
Gold

# REJUVENATE

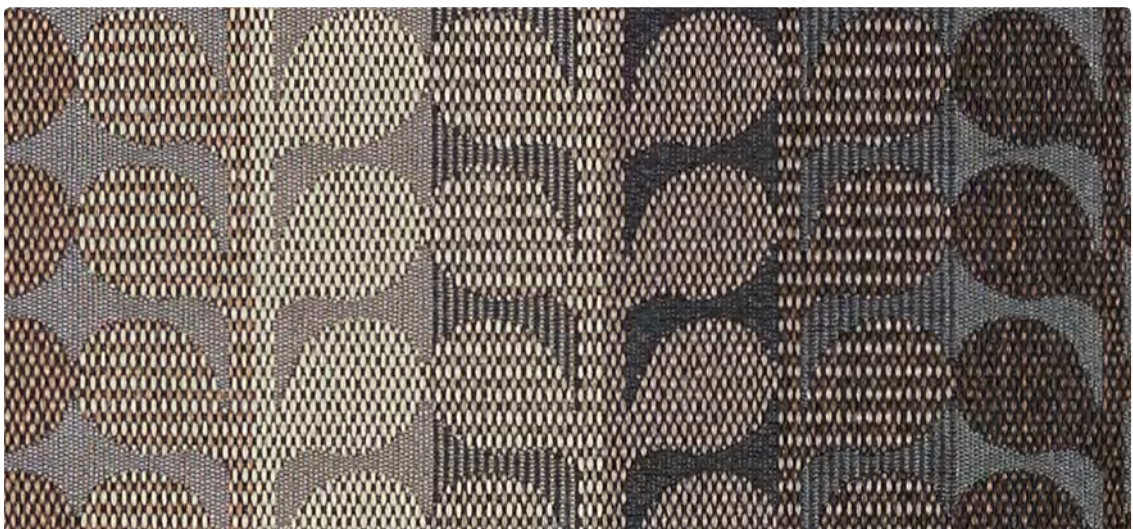
SHOWN RAILOADED



438-009  
Apricot



438-001  
Crimson



438-000  
Taupe

## TECHNICAL INFORMATION

Content: **100% Solution-Dyed Pre-Consumer Recycled Nylon**

Width: 54"

Backing: Acrylic

Approx. Repeat: 7.188" H, 0.75" V

Weight: 16.19 oz./linear yard

Finish: Stain Repellent – PFOA & PFOC Free

Directional: Yes

Shown Railroaded: Yes

## PERFORMANCE

Surface Abrasion: Heavy Duty ASTM D 4157  
(Wyzenbeek/Cotton Duck)

Pilling Resistance ASTM D 3511

Colorfastness to Crocking AATCC-8

Colorfastness to Light AATCC 16

## Results

Passes 147,000 Double Rubs Multiple factors affect fabric durability and appearance retention, including end-user application and proper maintenance. Wyzenbeek results above 100,000 double rubs have not been shown to be a reliable indicator of increased fabric lifespan.

Class 4

Dry: Class 4 min / Wet: Class 3 min

Class 5 at 200 hours

## FLAMMABILITY

California Technical Bulletin 117-2013

NFPA 260/UFAC Class 1

May comply with California Technical Bulletin 133 when combined with appropriate components.

## REDUCED ENVIRONMENTAL IMPACT

This product is **GREENGUARD Gold Certified for low chemical and particle emissions to UL standard UL 2818 and may contribute to LEED certification. For complete information visit [mayerfabrics.com](http://mayerfabrics.com) and [UL.com/gg](http://UL.com/gg).**



**Eco-System®**  
Sustainable. Attainable at Mayer Fabrics.

The Eco-System icon indicates 100% recycled content.



**facts\***  
Gold

The Facts icon indicates that a textile has been evaluated based on the requirements of the multi-attribute sustainability standard NSF/ANSI 336 through an independent third-party certification body authorized by the Association for Contract Textiles.

## CLEANING INFORMATION

WS: Water/Solvent Cleaner

BC: Bleach Cleanable – 1 part bleach, 9 parts water = 10% bleach, 90% water solution. Do not clean/disinfect fabric for longer than 10 minutes using the 10% bleach solution. Always rinse promptly with clean water after applying the bleach solution. Failure to do so will void any and all warranties.

## ADDITIONAL INFORMATION

**Custom Capabilities:** All patterns can be custom colored. Minimum yardage applies.

**Digital Swatch Card Color Matching:** Due to color variations on different monitors and color printers, actual swatch colors may vary slightly. Please request a memo sample from Mayer Fabrics to ensure proper color representation.

**Specifications:** Specifications are correct at the time of printing. Current specifications are available on our website.

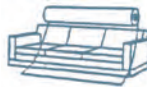


This fabric meets or exceeds these ACT performance guidelines. \*Certification Marks owned by ACT®

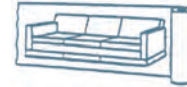


Water and Stain Repellent Finish

Railroaded: This feature allows reduction of seams and enables smoother furniture tailoring.



Fabric "up the roll" or "regular" position



Fabric "railroaded" or "top selvage" position

We recommend all railroaded patterns should be upholstered as shown on card.



REJUVENATE – Approx. Repeat: 7.188" H, 0.75" V  
Shown Railroaded



**MAYERFABRICS**