

**SUNA**

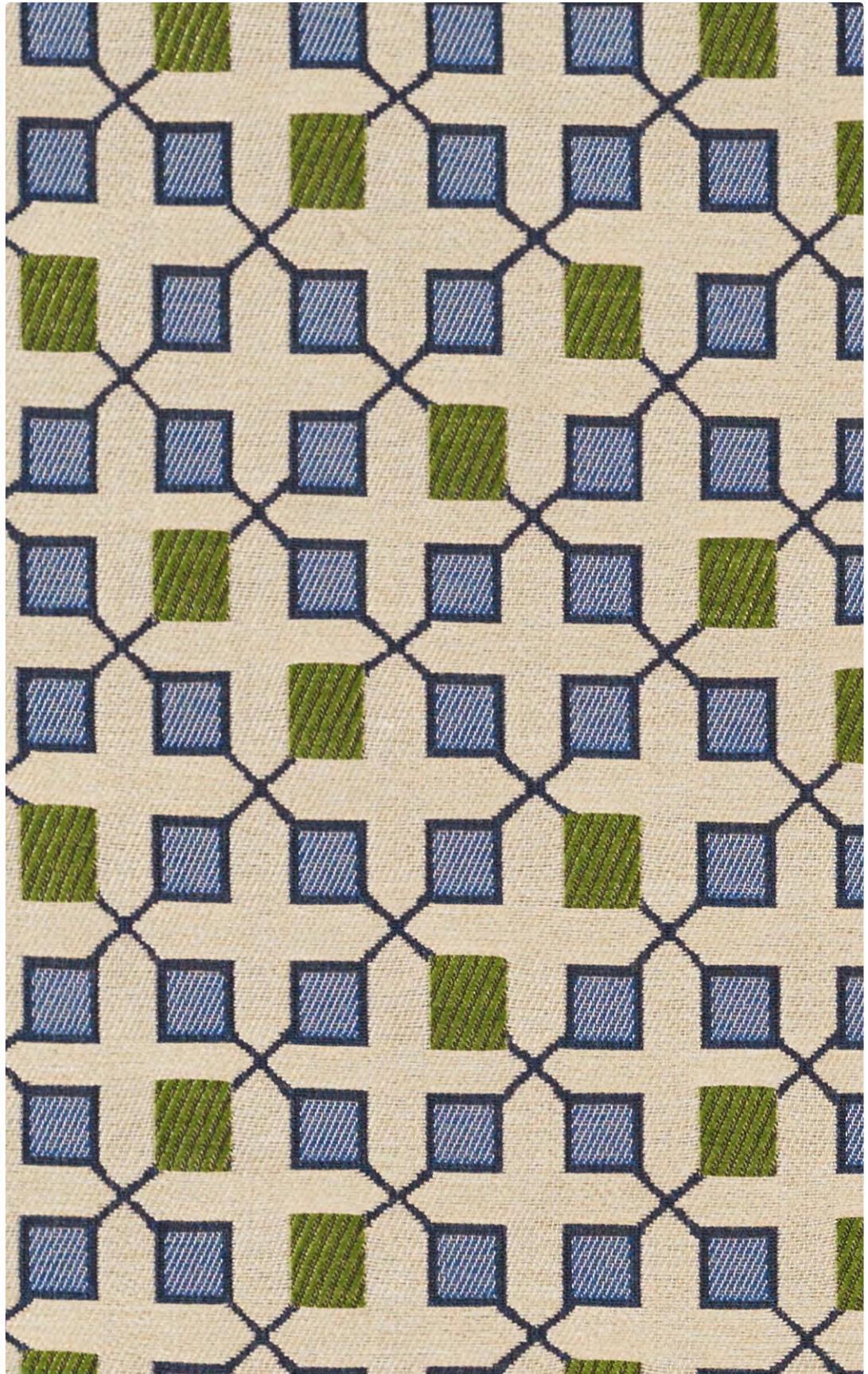
---

Upholstery Seating



**MAYER**FABRICS

# Upholstery Seating



**Application**  
Upholstery Seating

**Content**  
80% Solution-Dyed Recycled  
Nylon, 20% Solution-Dyed Nylon

**Width**  
54 inches

**Abrasion** (Wyzenbeek/Cotton Duck)  
Passes 150,000 Double Rubs

**Finish**  
Stain Repellent – PFOA &  
PFOC Free

**Reduced Environmental Impact**  
GREENGUARD Gold Certified

437-014  
Niagara



437-007  
Chamois



437-009  
Mandarin



437-003  
Leaf



437-001  
Vermillion



437-004  
Denim



437-006  
Coal

**TECHNICAL INFORMATION**Content: **80% Solution-Dyed Pre-Consumer Recycled Nylon**, 20% Solution-Dyed Nylon

Width: 54"

Backing: Acrylic

Approx. Repeat: 3.688" H, 7" V

Weight: 17.14 oz./linear yard

Finish: Stain Repellent – PFOA &amp; PFOC Free

Directional: Yes

Railroaded: No

**PERFORMANCE**Surface Abrasion: Heavy Duty ASTM D 4157  
(Wyzenbeek/Cotton Duck)

Pilling Resistance ASTM D 3511

Colorfastness to Crocking AATCC-8

Colorfastness to Light AATCC 16

**Results**Passes 150,000 Double Rubs  
appearance retention, including end-user application and proper maintenance. Wyzenbeek results above 100,000 double rubs have not been shown to be a reliable indicator of increased fabric lifespan.

Class 4

Dry: Class 4 / Wet: Class 3

Class 5 at 200 hours

**FLAMMABILITY**

California Technical Bulletin 117-2013

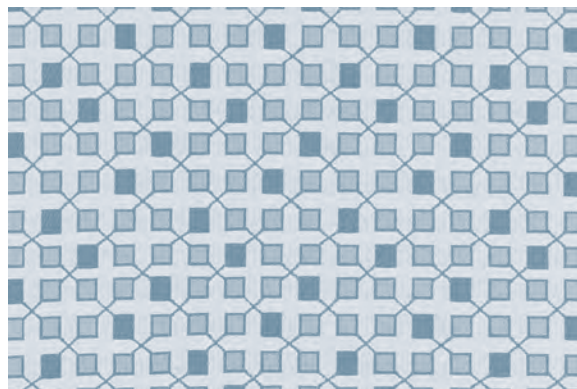
NFPA 260/UFAC Class 1

May comply with California Technical Bulletin 133 when combined with appropriate components.

**REDUCED ENVIRONMENTAL IMPACT****This product is GREENGUARD Gold Certified for low chemical and particle emissions to UL standard UL 2818 and may contribute to LEED certification. For complete information visit [mayerfabrics.com](http://mayerfabrics.com) and [UL.com/gg](http://UL.com/gg).****CLEANING INFORMATION**

WS: Water/Solvent Cleaner

BC: Bleach Cleanable – 1 part bleach, 9 parts water = 10% bleach, 90% water solution. Do not clean/disinfect fabric for longer than 10 minutes using the 10% bleach solution. Always rinse promptly with clean water after applying the bleach solution. Failure to do so will void any and all warranties.

**ADDITIONAL INFORMATION****Custom Capabilities:** All patterns can be custom colored. Minimum yardage applies.**Digital Swatch Card Color Matching:** Due to color variations on different monitors and color printers, actual swatch colors may vary slightly. Please request a memo sample from Mayer Fabrics to ensure proper color representation.**Specifications:** Specifications are correct at the time of printing. Current specifications are available on our website.This fabric meets or exceeds these ACT performance guidelines.  
\*Certification Marks owned by ACT®Water and Stain  
Repellent Finish

SUNA – Approx. Repeat: 3.688" H, 7" V

**MAYERFABRICS**