



422-037  
Igloo



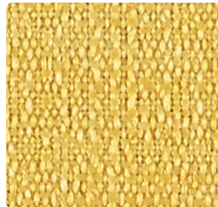
422-007  
Cafe Au Lait



422-017  
Almond



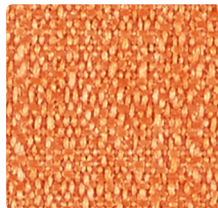
422-027  
Stone



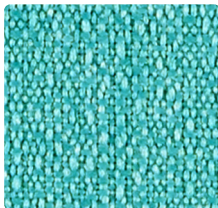
422-002  
Saffron



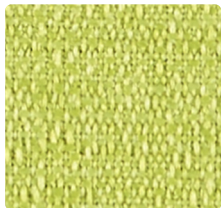
422-026  
Dove



422-009  
Mandarin



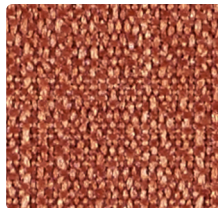
422-034  
Turquoise



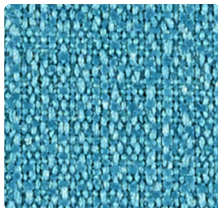
422-023  
Citrine



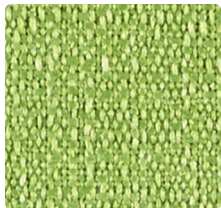
422-036  
Iron



422-019  
Brick



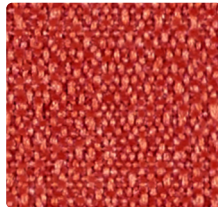
422-044  
Ocean



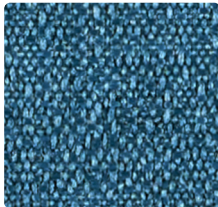
422-003  
Spring



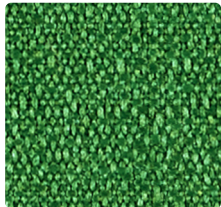
422-016  
Charcoal



422-001  
Lipstick



422-024  
Caribbean



422-013  
Emerald



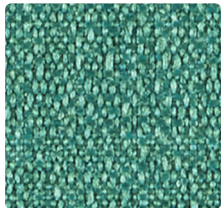
422-006  
Onyx



422-008  
Beet



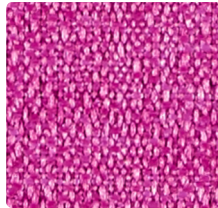
422-004  
Indigo



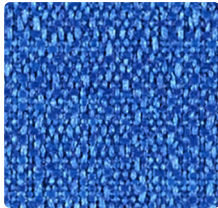
422-033  
Pine



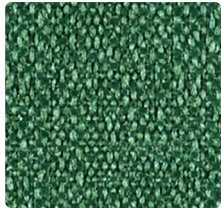
422-000  
Espresso



422-005  
Magenta



422-014  
Electric



422-043  
Bottle

# CONTINUUM 10

---

## TECHNICAL INFORMATION

Application: Multi-use for upholstery, panels, wrapped walls, and acoustics

Content: 100% Post-Consumer Recycled Polyester

Backing: Latex

Weight: 15 oz./linear yard / 465.051 g/lm

Width: 54 inches / 137 cm

Finish: Soil & Stain Resistant PFAS Free

Approx. Repeat: None

Directional: Yes

Shown Railroaded: No

---

## PERFORMANCE

Abrasion: Passes 130,000 Double Rubs  
(Wyzenbeek/Cotton Duck)

Abrasion test results exceeding ACT Performance Guidelines are not an indicator of product lifespan. Multiple factors affect durability and appearance retention.

Crocking: Dry: Grade 4 / Wet: Grade 4

Colorfastness to Light: Grade 4 at 40 hours

---

## FLAMMABILITY

California Technical Bulletin 117-2013

NFPA 260/UFAC Class 1

ASTM E84 (Unadhered) Class 1 or A

---

## REDUCED ENVIRONMENTAL IMPACT

This product is GREENGUARD Gold Certified for low chemical and particle emissions to UL standard UL 2818 and may contribute to LEED certification. For complete information visit [mayerfabrics.com](http://mayerfabrics.com).

No FR Additives    No Antimicrobial/Antibacterial Additives    PFAS Free

---

## CLEANING INFORMATION

WS: Water/Solvent Cleaner

BC: Bleach Cleanable –

1 part bleach, 9 parts water = 10% bleach, 90% water solution.

CFC: Coated Fabrics Cleaning – Refer to Mayer website for complete cleaning info.

---

## DYE TRANSFER DISCLAIMER

Certain clothing and accessory dyes (such as those used on denim jeans) may migrate to lighter colors. This phenomenon is increased by humidity and temperature and is irreversible. Mayer Fabrics will not assume responsibility for dye transfer caused by external contaminants. Please check compatibility when using this product in combination with painted or varnished surfaces.

---

## ADDITIONAL INFORMATION

Custom Colors: All patterns can be custom colored. Minimum yardage applies.

Warranty: Please refer to the Mayer website for warranty information by pattern.

Digital Swatch Card Color Matching: Due to color variations on different monitors and color printers, actual swatch colors may vary slightly. Please request a memo sample from Mayer Fabrics to ensure proper color representation.

Complete and current product information available at [mayerfabrics.com](http://mayerfabrics.com).

---



This 100% polyester fabric is included in the Underwriter's Laboratory Fabric Recognition Program. Additional testing of this U.L. recognized component is not required on approved panels from participating manufacturers.

# MAYER FABRICS