

POSITIVE THOUGHTS

WC964-001, Elation

TECHNICAL INFORMATION

CATEGORY: Upholstery

CONTENT: 94% Polyester/6% Recycled Polyester (4% Pre-/2% Post-Consumer)

BACKING: Crypton

FINISH: Crypton with Antimicrobial Silver Ion Technology

WIDTH: 54"

WEIGHT: 14 oz./ln yd

VISUAL REPEAT: 7.5 in/19.05 cm H, 6.88 in/17.48 cm V

SHOWN RAILROADED: No

DIRECTIONAL: Yes

APPROX. ROLL SIZE: 55 yards

PERFORMANCEABRASION RESISTANCE: Passes 75,000 Double Rubs
(Wyzenbeek/Cotton Duck)

BREAKING STRENGTH: Warp 305.0 / Fill 286.0

COLORFASTNESS TO CROCKING: Dry: Class 4 min/Wet: Class 3 min

COLORFASTNESS TO LIGHT: 40 hours

PILLING RESISTANCE: Class 4

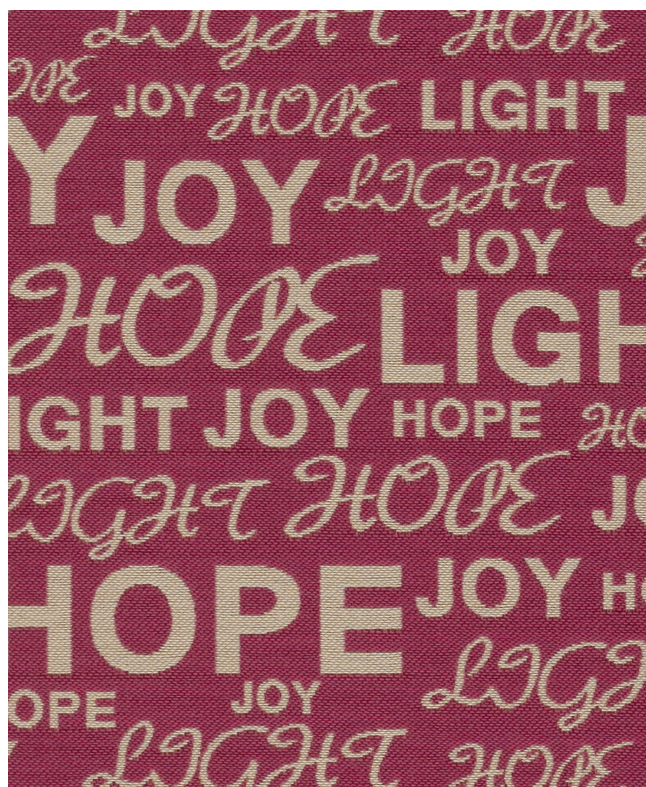
SEAM SLIPPAGE: Warp 93.0 / Fill 101.0

FLAMMABILITY

PASSES NFPA 260/UFAC CLASS 1

AB 2998 COMPLIANT

CAL 117 SECTION E

**REDUCED ENVIRONMENTAL IMPACT**

GREENGUARD GOLD CERTIFIED

NO FR ADDITIVES

MILLED IN AMERICA

DOES NOT CONTAIN CONFLICT MINERALS

WARRANTY

STANDARD UPHOLSTERY | '5' FIVE YEAR WARRANTY
See [Warranty Terms](#) for more information.

DYE TRANSFER DISCLAIMER

Certain clothing and accessory dyes (such as those used on denim jeans) may migrate to lighter colors. This phenomenon is increased by humidity and temperature and is irreversible. Mayer Fabrics will not assume responsibility for dye transfer caused by external contaminants. Please check compatibility when using this product in combination with painted or varnished surfaces.

ADDITIONAL INFORMATION

Custom Colors: All patterns can be custom colored. Minimum yardage applies.

Digital Swatch Color Matching: Due to color variations on different monitors and color printers, actual swatch colors may vary slightly. Please request a memo sample from Mayer Fabrics to ensure proper color representation.

CLEANING & MAINTENANCE

C: Crypton Cleaning - Crypton fabrics are available in various fiber types, and all Crypton fabrics can be cleaned with soap and water. For the best cleaning solution, use CRYPTON UPHOLSTERY CLEANER, available from Mayer Fabrics.

BC: Bleach Cleanable - 1 parts bleach, 9 parts water = 10% bleach, 90% water solution. Do not clean / disinfect fabric for longer than 10 minutes using the 10% bleach solution. Always rinse promptly with clean water after applying the bleach solution. Failure to do so will void any and all warranties.



% of sales from this pattern will be donated to The Common Thread for the Cure.