

BRIO

WC783-019, Copper

TECHNICAL INFORMATION

CATEGORY: Upholstery

CONTENT: 100% Polyester

BACKING: Crypton

FINISH: Crypton

WIDTH: 54"

WEIGHT: 14.2 oz./ln yd

SHOWN RAILROADED: No

DIRECTIONAL: Yes

APPROX. ROLL SIZE: 55 yards

PERFORMANCE



ABRASION RESISTANCE: Exceeds 100,000 Double Rubs*
(Wyzenbeek/Cotton Duck)

BREAKING STRENGTH: Warp 300.0 / Fill 300.0

COLORFASTNESS TO CROCKING: Dry: Class 4/Wet: Class 3

COLORFASTNESS TO LIGHT: 60 hours

PILLING RESISTANCE: Class 4

SEAM SLIPPAGE: Warp 50.0 / Fill 50.0

* Multiple factors affect fabric durability and appearance retention, including end-user application and proper maintenance.
Wyzenbeek results above 100,000 double rubs have not been shown to be an indicator of increased lifespan.

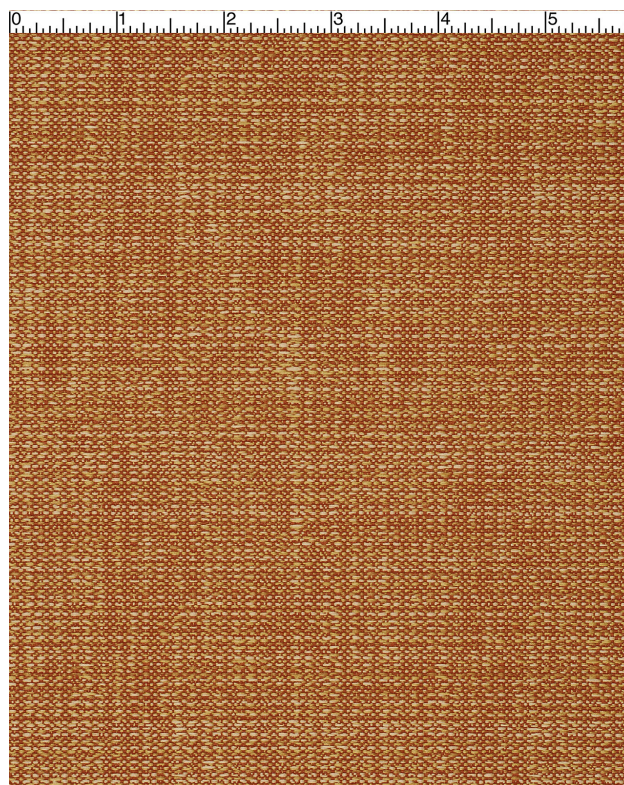
FLAMMABILITY

PASSES NFPA 260/UFAC CLASS 1

AB 2998 COMPLIANT

CAL 117 SECTION E

MAY COMPLY WITH CAL. TECH. BUL. 133 WHEN COMBINED WITH APPROPRIATE COMPONENTS.



REDUCED ENVIRONMENTAL IMPACT

GREENGUARD GOLD CERTIFIED

MILLED IN AMERICA

DOES NOT CONTAIN CONFLICT MINERALS

DYE TRANSFER DISCLAIMER

Certain clothing and accessory dyes (such as those used on denim jeans) may migrate to lighter colors. This phenomenon is increased by humidity and temperature and is irreversible. Mayer Fabrics will not assume responsibility for dye transfer caused by external contaminants. Please check compatibility when using this product in combination with painted or varnished surfaces.

ADDITIONAL INFORMATION

Custom Colors: All patterns can be custom colored. Minimum yardage applies.

Digital Swatch Color Matching: Due to color variations on different monitors and color printers, actual swatch colors may vary slightly. Please request a memo sample from Mayer Fabrics to ensure proper color representation.

CLEANING & MAINTENANCE

C: Crypton Cleaning - Crypton fabrics are available in various fiber types, and all Crypton fabrics can be cleaned with soap and water. For the best cleaning solution, use CRYPTON UPHOLSTERY CLEANER, available from Mayer Fabrics.