

NIMBLE

WC723-007, Pearl

Validity Collection

TECHNICAL INFORMATION

CATEGORY: Upholstery
CONTENT: 97% Polyester/3% Viscose
BACKING: Crypton® Moisture Barrier
FINISH: Crypton®
WIDTH: 54"
WEIGHT: 18.33 oz./ln yd
VISUAL REPEAT: None
SHOWN RAILROADED: No
DIRECTIONAL: Yes
APPROX. ROLL SIZE: 40 yards
APPLICATION: Indoor

PERFORMANCE

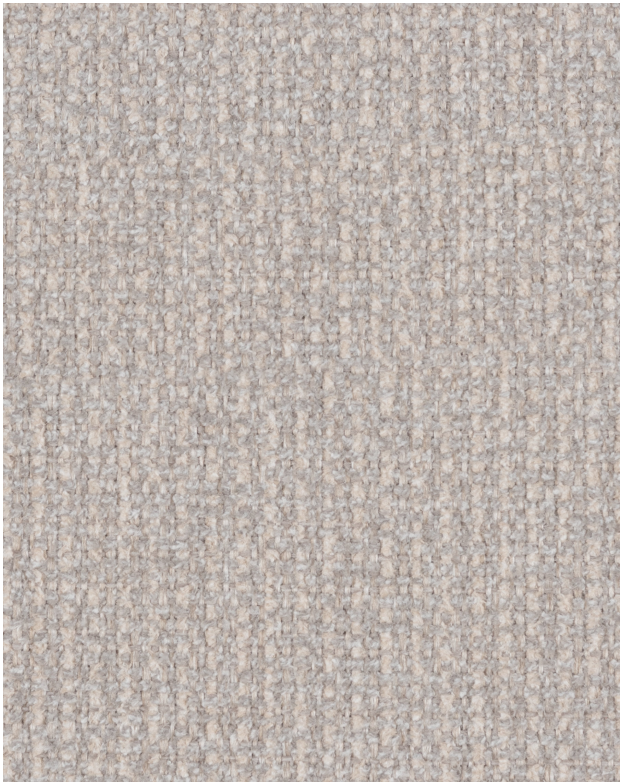


ABRASION RESISTANCE: Exceeds 100,000 Double Rubs*
(Wyzenbeek/Cotton Duck)
BREAKING STRENGTH: Warp 299.5 / Fill 167.0
COLORFASTNESS TO CROCKING: Dry: Class 4/Wet: Class 4
COLORFASTNESS TO LIGHT: 40 hours
PILLING RESISTANCE: Class 5
SEAM SLIPPAGE: Warp 42.3 / Fill 40.9
LIQUID BARRIER

* Multiple factors affect fabric durability and appearance retention, including end-user application and proper maintenance.
Wyzenbeek results above 100,000 double rubs have not been shown to be an indicator of increased lifespan.

FLAMMABILITY

PASSES CAL TB 117-2013
NFPA 260/UFAC CLASS 1
AB 2998 COMPLIANT



REDUCED ENVIRONMENTAL IMPACT

GREENGUARD GOLD CERTIFIED
PFAS FREE
NO FR ADDITIVES
MINDFUL MATERIALS COMPLIANT
BPA FREE
FORMALDEHYDE FREE
HPD AVAILABLE
PROP 65 COMPLIANT
REACH COMPLIANT
ROHS COMPLIANT
DOES NOT CONTAIN CONFLICT MINERALS

WARRANTY

STANDARD UPHOLSTERY | '5' FIVE YEAR WARRANTY
See [Warranty Terms](#) for more information.

DYE TRANSFER DISCLAIMER

Certain clothing and accessory dyes (such as those used on denim jeans) may migrate to lighter colors. This phenomenon is increased by humidity and temperature and is irreversible. Mayer Fabrics will not assume responsibility for dye transfer caused by external contaminants. Please check compatibility when using this product in combination with painted or varnished surfaces.

ADDITIONAL INFORMATION

Custom Colors: All patterns can be custom colored. Minimum yardage applies.

Digital Swatch Color Matching: Due to color variations on different monitors and color printers, actual swatch colors may vary slightly. Please request a memo sample from Mayer Fabrics to ensure proper color representation.

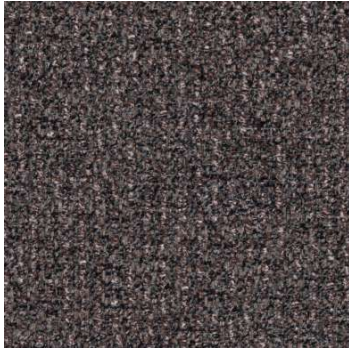
CLEANING & MAINTENANCE

C: Crypton Cleaning - Crypton fabrics are available in various fiber types, and all Crypton fabrics can be cleaned with soap and water. For the best cleaning solution, use CRYPTON UPHOLSTERY CLEANER, available from Mayer Fabrics.

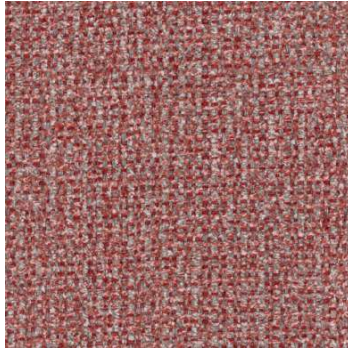
W: Water-Based Cleaner - Spot clean, using the foam only from a water-based cleaning agent, such as a mild detergent or non-solvent upholstery shampoo product. Apply foam with a soft brush in a circular motion. Always rinse promptly with clean water. Vacuum when dry. Pretest small area before proceeding.

BC: Bleach Cleanable - 1 parts bleach, 9 parts water = 10% bleach, 90% water solution. Do not clean / disinfect fabric for longer than 10 minutes using the 10% bleach solution. Always rinse promptly with clean water after applying the bleach solution. Failure to do so will void any and all warranties.

NIMBLE COLORS (10)



Obsidian
WC723-000



Ruby
WC723-001



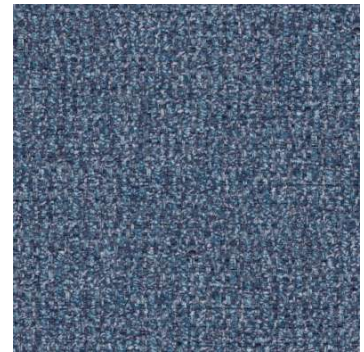
Citrine
WC723-002



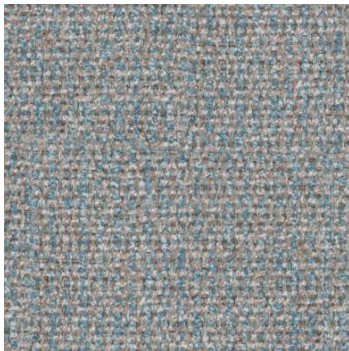
Emerald
WC723-003



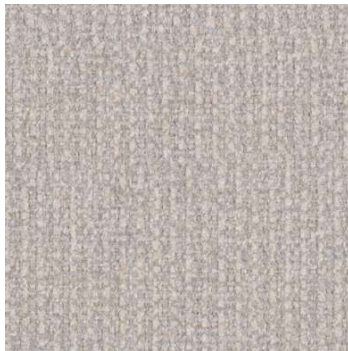
Jade
WC723-013



Sapphire
WC723-004



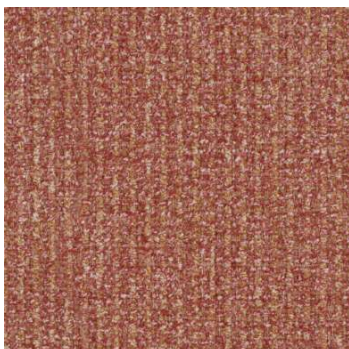
Aquamarine
WC723-014



Pearl
WC723-007



Cobblestone
WC723-017



Amber
WC723-009