

NIMBLE

WC723-004, Sapphire

Validity Collection

TECHNICAL INFORMATION

CATEGORY: Upholstery  
CONTENT: 97% Polyester/3% Viscose  
BACKING: Crypton® Moisture Barrier  
FINISH: Crypton®  
WIDTH: 54"  
WEIGHT: 18.33 oz./ln yd  
VISUAL REPEAT: None  
SHOWN RAILROADED: No  
DIRECTIONAL: Yes  
APPROX. ROLL SIZE: 40 yards  
APPLICATION: Indoor

PERFORMANCE

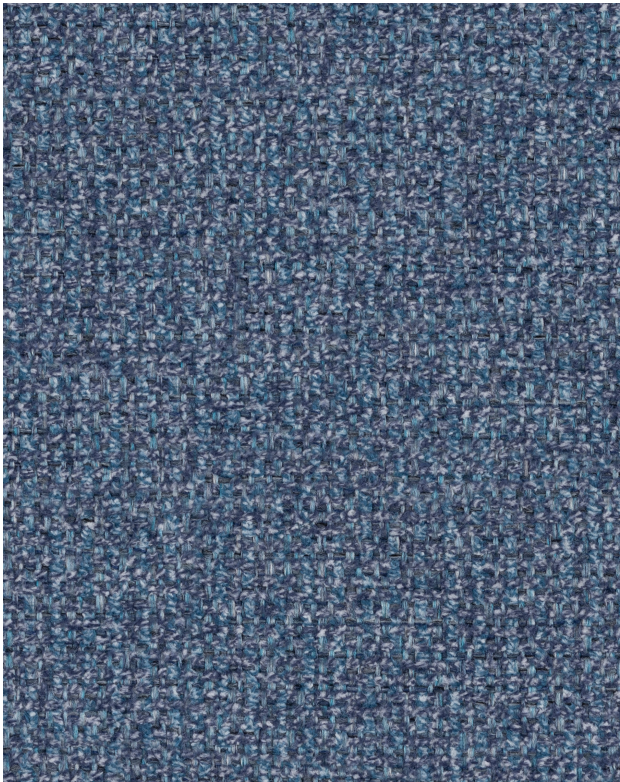


ABRASION RESISTANCE: Exceeds 100,000 Double Rubs\*  
(Wyzenbeek/Cotton Duck)  
BREAKING STRENGTH: Warp 299.5 / Fill 167.0  
COLORFASTNESS TO CROCKING: Dry: Class 4/Wet: Class 4  
COLORFASTNESS TO LIGHT: 40 hours  
PILLING RESISTANCE: Class 5  
SEAM SLIPPAGE: Warp 42.3 / Fill 40.9  
LIQUID BARRIER

\* Multiple factors affect fabric durability and appearance retention, including end-user application and proper maintenance.  
Wyzenbeek results above 100,000 double rubs have not been shown to be an indicator of increased lifespan.

FLAMMABILITY

PASSES CAL TB 117-2013  
NFPA 260/UFAC CLASS 1  
AB 2998 COMPLIANT



REDUCED ENVIRONMENTAL IMPACT

GREENGUARD GOLD CERTIFIED  
PFAS FREE  
NO FR ADDITIVES  
MINDFUL MATERIALS COMPLIANT  
BPA FREE  
FORMALDEHYDE FREE  
HPD AVAILABLE  
PROP 65 COMPLIANT  
REACH COMPLIANT  
ROHS COMPLIANT  
DOES NOT CONTAIN CONFLICT MINERALS

## WARRANTY

STANDARD UPHOLSTERY | '5' FIVE YEAR WARRANTY  
See [Warranty Terms](#) for more information.

## DYE TRANSFER DISCLAIMER

Certain clothing and accessory dyes (such as those used on denim jeans) may migrate to lighter colors. This phenomenon is increased by humidity and temperature and is irreversible. Mayer Fabrics will not assume responsibility for dye transfer caused by external contaminants. Please check compatibility when using this product in combination with painted or varnished surfaces.

## ADDITIONAL INFORMATION

Custom Colors: All patterns can be custom colored. Minimum yardage applies.

Digital Swatch Color Matching: Due to color variations on different monitors and color printers, actual swatch colors may vary slightly. Please request a memo sample from Mayer Fabrics to ensure proper color representation.

## CLEANING & MAINTENANCE

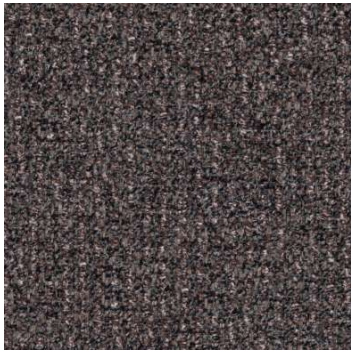
C: Crypton Cleaning - Crypton fabrics are available in various fiber types, and all Crypton fabrics can be cleaned with soap and water. For the best cleaning solution, use CRYPTON UPHOLSTERY CLEANER, available from Mayer Fabrics.

W: Water-Based Cleaner - Spot clean, using the foam only from a water-based cleaning agent, such as a mild detergent or non-solvent upholstery shampoo product. Apply foam with a soft brush in a circular motion. Always rinse promptly with clean water. Vacuum when dry. Pretest small area before proceeding.

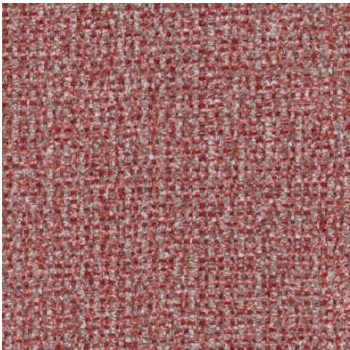
BC: Bleach Cleanable - 1 parts bleach, 9 parts water = 10% bleach, 90% water solution. Do not clean / disinfect fabric for longer than 10 minutes using the 10% bleach solution. Always rinse promptly with clean water after applying the bleach solution. Failure to do so will void any and all warranties.



NIMBLE COLORS (10)



**Obsidian**  
WC723-000



**Ruby**  
WC723-001



**Citrine**  
WC723-002



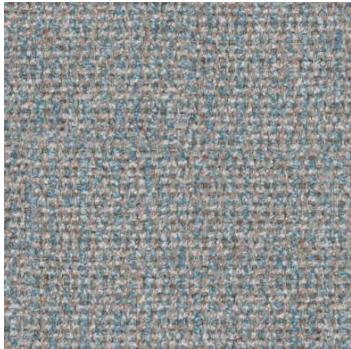
**Emerald**  
WC723-003



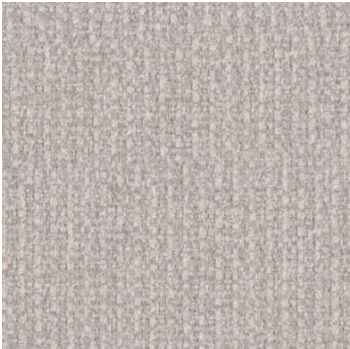
**Jade**  
WC723-013



**Sapphire**  
WC723-004



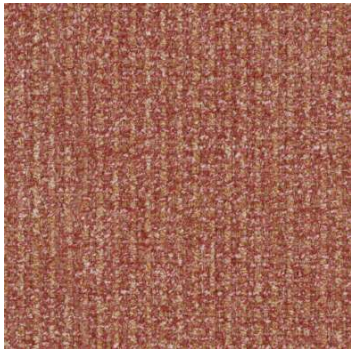
**Aquamarine**  
WC723-014



**Pearl**  
WC723-007



**Cobblestone**  
WC723-017



**Amber**  
WC723-009