

## SOHO

WC705-002, Caramel

### TECHNICAL INFORMATION

CATEGORY: Upholstery  
 CONTENT: 60% Post-Consumer Recycled Polyester/40% Eco-Intelligent® Polyester  
 BACKING: Crypton® Green  
 FINISH: Crypton® Green with Antimicrobial Silver Ion Technology  
 WIDTH: 54"  
 WEIGHT: 13.3 oz./ln yd  
 VISUAL REPEAT: 5.75 in/14.60 cm H, 4.92 in/12.50 cm V  
 SHOWN RAILROADED: No  
 DIRECTIONAL: Yes  
 APPROX. ROLL SIZE: 60 yards

### PERFORMANCE



ABRASION RESISTANCE: Exceeds 100,000 Double Rubs\*  
 (Wyzenbeek/Cotton Duck)

BREAKING STRENGTH: Warp 192.0 / Fill 162.0

COLORFASTNESS TO CROCKING: Dry: Class 4/Wet: Class 4

COLORFASTNESS TO LIGHT: 40 hours

PILLING RESISTANCE: Class 4

SEAM SLIPPAGE: Warp 107.0 / Fill 97.0

LIQUID BARRIER

\* Multiple factors affect fabric durability and appearance retention, including end-user application and proper maintenance.  
 Wyzenbeek results above 100,000 double rubs have not been shown to be an indicator of increased lifespan.

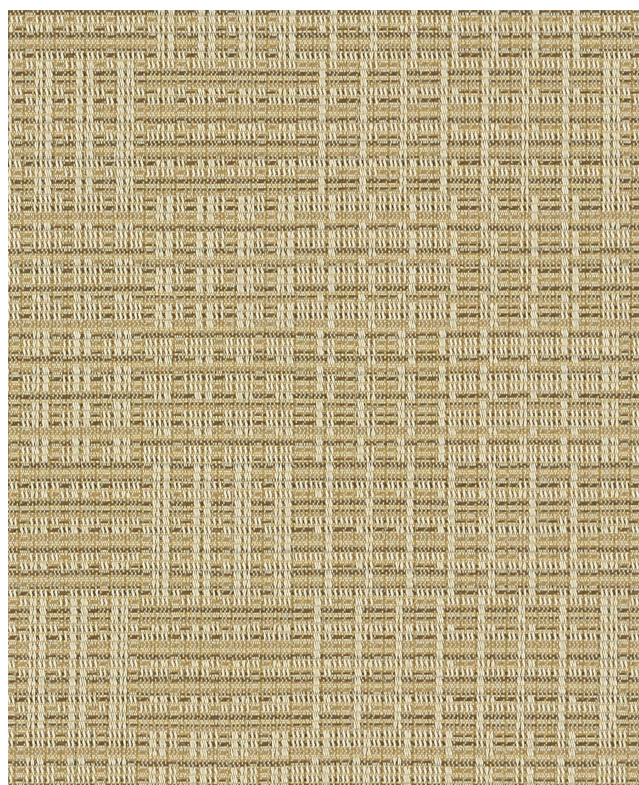
### FLAMMABILITY

PASSES CAL TB 117-2013

NFPA 260/UFAC CLASS 1

AB 2998 COMPLIANT

MAY COMPLY WITH CAL. TECH. BUL. 133 WHEN COMBINED WITH APPROPRIATE COMPONENTS.



### REDUCED ENVIRONMENTAL IMPACT

GREENGUARD GOLD CERTIFIED

NO FR ADDITIVES

ANTIMONY FREE

DOES NOT CONTAIN CONFLICT MINERALS

## WARRANTY

STANDARD UPHOLSTERY | '5' FIVE YEAR WARRANTY  
See [Warranty Terms](#) for more information.

## DYE TRANSFER DISCLAIMER

Certain clothing and accessory dyes (such as those used on denim jeans) may migrate to lighter colors. This phenomenon is increased by humidity and temperature and is irreversible. Mayer Fabrics will not assume responsibility for dye transfer caused by external contaminants. Please check compatibility when using this product in combination with painted or varnished surfaces.

## ADDITIONAL INFORMATION

Custom Colors: All patterns can be custom colored. Minimum yardage applies.

Digital Swatch Color Matching: Due to color variations on different monitors and color printers, actual swatch colors may vary slightly. Please request a memo sample from Mayer Fabrics to ensure proper color representation.

## CLEANING & MAINTENANCE

C: Crypton Cleaning - Crypton fabrics are available in various fiber types, and all Crypton fabrics can be cleaned with soap and water. For the best cleaning solution, use CRYPTON UPHOLSTERY CLEANER, available from Mayer Fabrics.

BC: Bleach Cleanable - 1 parts bleach, 9 parts water = 10% bleach, 90% water solution. Do not clean / disinfect fabric for longer than 10 minutes using the 10% bleach solution. Always rinse promptly with clean water after applying the bleach solution. Failure to do so will void any and all warranties.