

TELLUS  
TE-017, Linen

TECHNICAL INFORMATION

CATEGORY: Upholstery  
CONTENT: 80% Hyphyn™ Biodegradable Vinyl face, 20% Hyphyn™ Biodegradable Polyester backing  
BACKING: Hyphyn™ Biodegradable Polyester  
FINISH: Soil & Stain Resistant Top Coat  
WIDTH: 54"  
WEIGHT: 31 oz./ln yd  
VISUAL REPEAT: None  
SHOWN RAILROADED: No  
DIRECTIONAL: Yes  
APPROX. ROLL SIZE: 30 yards  
APPLICATION: Indoor / Atrium

PERFORMANCE



ABRASION RESISTANCE: Exceeds 250,000 Double Rubs\*  
(Wyzenbeek/Cotton Duck)  
BREAKING STRENGTH: Warp 96.9 / Fill 82.3  
COLORFASTNESS TO CROCKING: Dry: Class 5/Wet: Class 5  
COLORFASTNESS TO LIGHT: 300 hours  
SEAM STRENGTH: Warp 52.2 / Fill 46.3  
COLD CRACK: -20 °F  
LIQUID BARRIER

\* Multiple factors affect fabric durability and appearance retention, including end-user application and proper maintenance.  
Wyzenbeek results above 100,000 double rubs have not been shown to be an indicator of increased lifespan.

FLAMMABILITY

PASSES CAL TB 117-2013  
NFPA 260/UFAC CLASS 1  
AB 2998 COMPLIANT  
FMVSS 302



REDUCED ENVIRONMENTAL IMPACT

GREENGUARD GOLD CERTIFIED  
PHTHALATE FREE  
PFAS FREE  
NO FR ADDITIVES  
NO ANTIMICROBIAL ADDITIVES  
NO ANTIBACTERIAL ADDITIVES  
MINDFUL MATERIALS COMPLIANT  
BIODEGRADABLE  
BPA FREE  
FORMALDEHYDE FREE  
VEGAN COMPLIANT  
TRIS FREE  
HPD AVAILABLE  
PROP 65 COMPLIANT  
REACH COMPLIANT  
ROHS COMPLIANT  
DOES NOT CONTAIN CONFLICT MINERALS

## WARRANTY

STANDARD UPHOLSTERY | '5' FIVE YEAR WARRANTY  
See [Warranty Terms](#) for more information.

## DYE TRANSFER DISCLAIMER

Certain clothing and accessory dyes (such as those used on denim jeans) may migrate to lighter colors. This phenomenon is increased by humidity and temperature and is irreversible. Mayer Fabrics will not assume responsibility for dye transfer caused by external contaminants. Please check compatibility when using this product in combination with painted or varnished surfaces.

## ADDITIONAL INFORMATION

Custom Colors: All patterns can be custom colored. Minimum yardage applies.

Digital Swatch Color Matching: Due to color variations on different monitors and color printers, actual swatch colors may vary slightly. Please request a memo sample from Mayer Fabrics to ensure proper color representation.

## Hyphen™ Material Content

Hyphyn™ Vinyl biodegrades over 90% within 24 months in landfill conditions, per ASTM D5511 testing. Its patented enzyme system activates only in anaerobic landfill environments, breaking down the material into inert components like CO<sub>2</sub>, methane, and biomass without producing microplastics or harmful residues. Post-biodegradation soil tests confirm zero detectable chemicals of concern, with 100% plant germination in resulting soil, ensuring environmental safety.



## CLEANING & MAINTENANCE

WS: Water/Solvent Cleaner - Spot clean with a mild solvent, an upholstery shampoo, or the foam from a mild detergent. When using a solvent or dry cleaning product, follow instructions carefully and clean only in a well-ventilated room. Avoid any product that contains carbon tetrachloride or other toxic materials. With either method, pretest a small area before proceeding. Always rinse promptly with clean water.

CFC: Coated Fabrics Cleaning - When a spill/stain occurs wipe immediately with a clean dry cloth. Carefully remove the majority of the stain then follow the steps below.

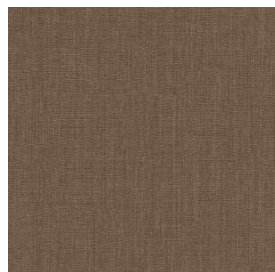
Soap & Water - Remove ordinary dirt and smudges with a mild soap and water solution using a soft cloth or towel. Rinse with fresh water and wipe dry.

Non-abrasive Cleaners - If residue remains, use a straight application of the following cleaners: Fantastik or 409 and gently clean with a soft cloth. Rinse with fresh water and wipe dry.

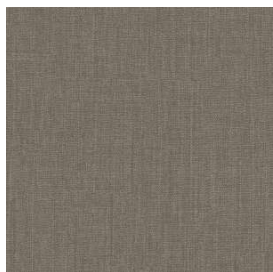
Isopropyl Alcohol - More stubborn stains may be eliminated using a cotton cloth soaked in 70-91% isopropyl (rubbing) alcohol. Wipe without spreading stain to surrounding area. A second application should be applied with vigorous rubbing in a circular motion. For highly textured material, a soft brush is recommended to clean valleys and crevices. Rinse with fresh water and wipe dry.

BC: Bleach Cleanable - 1 parts bleach, 9 parts water = 10% bleach, 90% water solution. Do not clean / disinfect fabric for longer than 10 minutes using the 10% bleach solution. Always rinse promptly with clean water after applying the bleach solution. Failure to do so will void any and all warranties.

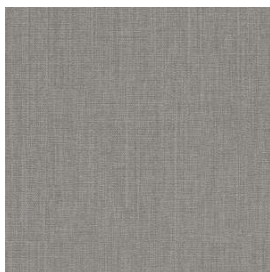
**TELLUS COLORS (22)**



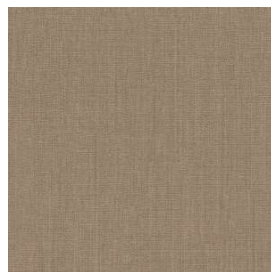
**Allspice**  
TE-000



**Branch**  
TE-010



**Cobblestone**  
TE-020



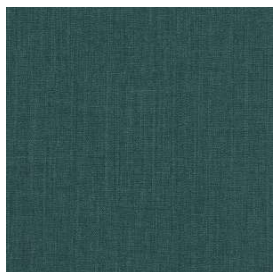
**Khaki**  
TE-030



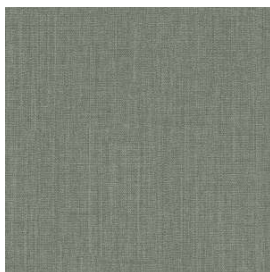
**Garnet**  
TE-001



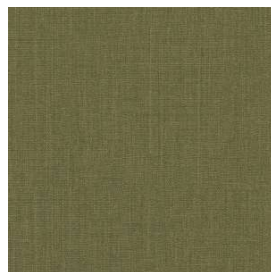
**Goldfinch**  
TE-002



**Emerald**  
TE-003



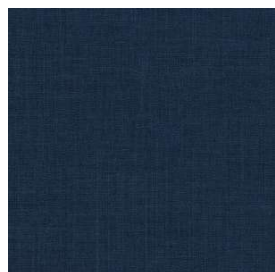
**Bamboo**  
TE-013



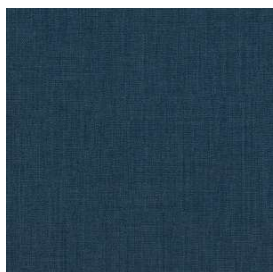
**Pesto**  
TE-023



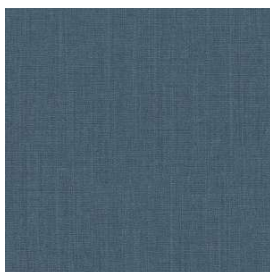
**Hunter**  
TE-033



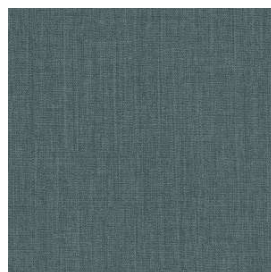
**Naval**  
TE-004



**Inky Blue**  
TE-014



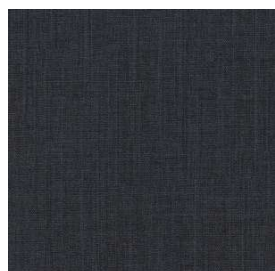
**Blue Jeans**  
TE-024



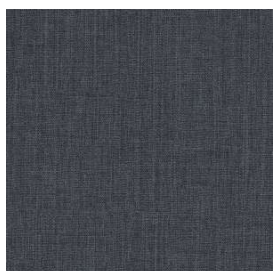
**Tradewind**  
TE-034



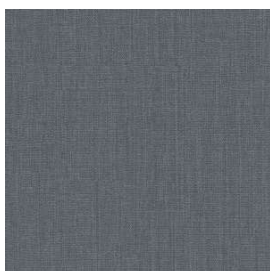
**Merlot**  
TE-005



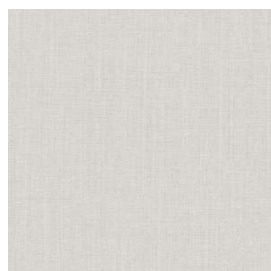
**Charcoal**  
TE-006



**Caviar**  
TE-016



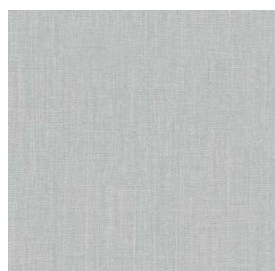
**Storm**  
TE-026



**Alabaster**  
TE-007



**Linen**  
TE-017



**Glacier**  
TE-027



**Bittersweet**  
TE-009