

SILVERWEAVE

SW-000, Cocoa

TECHNICAL INFORMATION

CATEGORY: Upholstery
CONTENT: 81% Vinyl face, 19% Polyester backing
BACKING: 100% Polyester
FINISH: Soil and Stain Resistant Top Coat
WIDTH: 54"
WEIGHT: 30 oz./ln yd
VISUAL REPEAT: None
SHOWN RAILROADED: No
DIRECTIONAL: Yes
APPROX. ROLL SIZE: 30 yards
APPLICATION: Indoor / Outdoor / Atrium

PERFORMANCE



ABRASION RESISTANCE: Passes 930,000 Double Rubs*
(Wyzenbeek/Cotton Duck)

BREAKING STRENGTH: Warp 121.0 / Fill 72.0

COLORFASTNESS TO CROCKING: Dry: Class 4 min/Wet: Class 4 min

COLORFASTNESS TO LIGHT: 1000 hours

PILLING RESISTANCE: Class N/A

SEAM STRENGTH: Warp 46.0 / Fill 35.0

COLD CRACK: -10 °F

DENIM DYE RESISTANT

LIQUID BARRIER

MILDEW RESISTANT

* Multiple factors affect fabric durability and appearance retention, including end-user application and proper maintenance.
Wyzenbeek results above 100,000 double rubs have not been shown to be an indicator of increased lifespan.

FLAMMABILITY

PASSES CAL TB 117-2013

NFPA 260/UFAC CLASS 1

AB 2998 COMPLIANT



REDUCED ENVIRONMENTAL IMPACT

GREENGUARD GOLD CERTIFIED

PFAS FREE

NO FR ADDITIVES

MINDFUL MATERIALS COMPLIANT

FORMALDEHYDE FREE

VEGAN COMPLIANT

PROP 65 COMPLIANT

REACH COMPLIANT

ROHS COMPLIANT

DOES NOT CONTAIN CONFLICT MINERALS

CFFA HEALTHCARE 201 COMPLIANT

WARRANTY

STANDARD UPHOLSTERY | '5' FIVE YEAR WARRANTY
See [Warranty Terms](#) for more information.

DYE TRANSFER DISCLAIMER

Certain clothing and accessory dyes (such as those used on denim jeans) may migrate to lighter colors. This phenomenon is increased by humidity and temperature and is irreversible. Mayer Fabrics will not assume responsibility for dye transfer caused by external contaminants. Please check compatibility when using this product in combination with painted or varnished surfaces.

ADDITIONAL INFORMATION

Custom Colors: All patterns can be custom colored. Minimum yardage applies.

Digital Swatch Color Matching: Due to color variations on different monitors and color printers, actual swatch colors may vary slightly. Please request a memo sample from Mayer Fabrics to ensure proper color representation.

CLEANING & MAINTENANCE

CFC: Coated Fabrics Cleaning - When a spill/stain occurs wipe immediately with a clean dry cloth. Carefully remove the majority of the stain then follow the steps below.

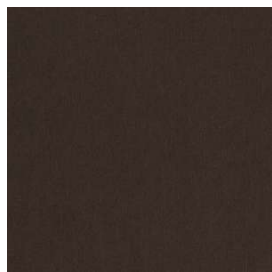
Soap & Water - Remove ordinary dirt and smudges with a mild soap and water solution using a soft cloth or towel. Rinse with fresh water and wipe dry.

Non-abrasive Cleaners - If residue remains, use a straight application of the following cleaners: Fantastik or 409 and gently clean with a soft cloth. Rinse with fresh water and wipe dry.

Isopropyl Alcohol - More stubborn stains may be eliminated using a cotton cloth soaked in 70-91% isopropyl (rubbing) alcohol. Wipe without spreading stain to surrounding area. A second application should be applied with vigorous rubbing in a circular motion. For highly textured material, a soft brush is recommended to clean valleys and crevices. Rinse with fresh water and wipe dry.

BC: Bleach Cleanable - 1 parts bleach, 9 parts water = 10% bleach, 90% water solution. Do not clean / disinfect fabric for longer than 10 minutes using the 10% bleach solution. Always rinse promptly with clean water after applying the bleach solution. Failure to do so will void any and all warranties.

SILVERWEAVE COLORS (37)



Cocoa
SW-000



Walnut
SW-010



Mica
SW-020



Cliff
SW-030



Cranberry
SW-001



Poppy
SW-011



Sienna
SW-002



Daylily
SW-012



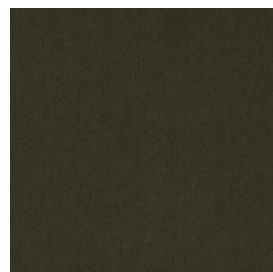
Curry
SW-022



Jade
SW-003



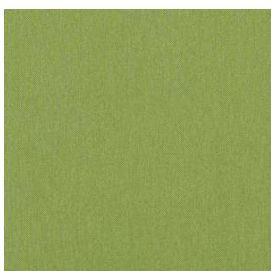
Willow
SW-013



Moss
SW-023



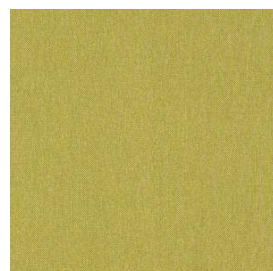
Lichen
SW-033



Lime
SW-043



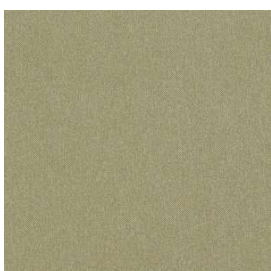
Spring
SW-053



Pear
SW-063



Oregano
SW-073



Olive
SW-083



Indigo
SW-004

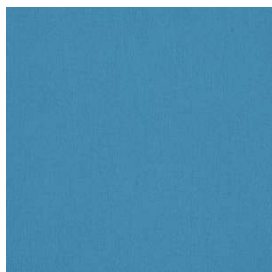


Baltic
SW-014

SILVERWEAVE COLORS (37)



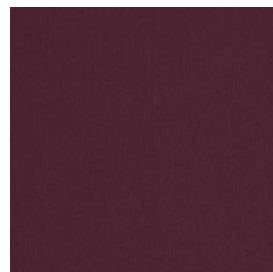
Cobalt
SW-024



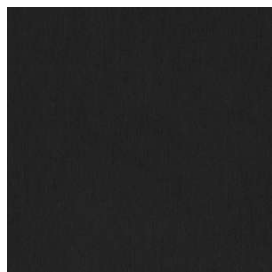
Cyan
SW-034



Calypso
SW-044



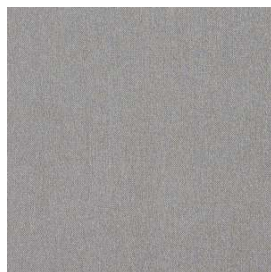
Eggplant
SW-005



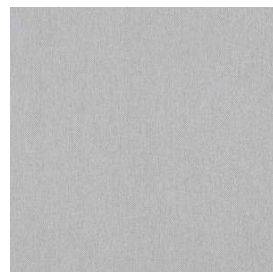
Graphite
SW-006



Cadet
SW-016



Zinc
SW-026



Pewter
SW-036



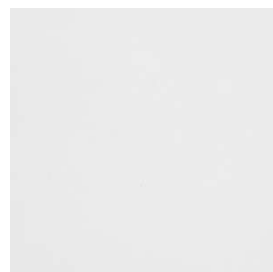
Camel
SW-007



Doe
SW-017



Ivory
SW-027



Alabaster
SW-037



Orchid
SW-008



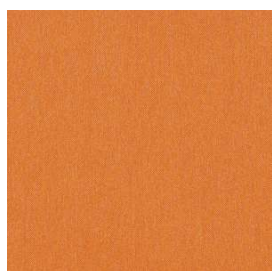
Cayenne
SW-009



Tangerine
SW-019



Amber
SW-029



Bittersweet
SW-039