

SCORE

SE-037, Pumice

TECHNICAL INFORMATION

CATEGORY: Upholstery
CONTENT: 45% Polyurethane Polycarbonate - PVC Free face, 55% Polyester backing
BACKING: Polyester
FINISH: WRITE AWAY® - Soil & Stain Resistant Top Coat with Ink Resistant Technology
WIDTH: 54"
WEIGHT: 20 oz./ln yd
VISUAL REPEAT: None
SHOWN RAILROADED: No
DIRECTIONAL: Yes
APPROX. ROLL SIZE: 30 yards
APPLICATION: Indoor



PERFORMANCE



ABRASION RESISTANCE: Passes 250,000 Double Rubs* (Wyzenbeek/Cotton Duck)
BREAKING STRENGTH: Warp 119.0 / Fill 239.0
COLORFASTNESS TO CROCKING: Dry: Class 4 min/Wet: Class 4 min
COLORFASTNESS TO LIGHT: Grade 4.5 at 200 hours
PILLING RESISTANCE: Class n/a
SEAM STRENGTH: Warp 70.0 / Fill 70.0
HYDROLYSIS: 10 weeks
INK RESISTANT
LIQUID BARRIER
DENIM DYE RESISTANT
MILDEW RESISTANT

* Multiple factors affect fabric durability and appearance retention, including end-user application and proper maintenance. Wyzenbeek results above 100,000 double rubs have not been shown to be an indicator of increased lifespan.

FLAMMABILITY

PASSES CAL TB 117-2013
NFPA 260/UFAC CLASS 1
AB 2998 COMPLIANT

REDUCED ENVIRONMENTAL IMPACT

GREENGUARD GOLD CERTIFIED
PHTHALATE FREE
PFAS FREE
NO FR ADDITIVES
HHI / GREENHEALTH COMPLIANT
NO ANTIMICROBIAL ADDITIVES
NO ANTIBACTERIAL ADDITIVES
BPA FREE
LEAD/HEAVY METAL FREE
FORMALDEHYDE FREE
TRIS FREE
PROP 65 COMPLIANT
VEGAN COMPLIANT
REACH COMPLIANT
HPD AVAILABLE
ROHS COMPLIANT
RED LIST FREE
DOES NOT CONTAIN CONFLICT MINERALS

WARRANTY

STANDARD UPHOLSTERY | '5' FIVE YEAR WARRANTY
See [Warranty Terms](#) for more information.

DYE TRANSFER DISCLAIMER

Certain clothing and accessory dyes (such as those used on denim jeans) may migrate to lighter colors. This phenomenon is increased by humidity and temperature and is irreversible. Mayer Fabrics will not assume responsibility for dye transfer caused by external contaminants. Please check compatibility when using this product in combination with painted or varnished surfaces.

ADDITIONAL INFORMATION

Custom Colors: All patterns can be custom colored. Minimum yardage applies.

Digital Swatch Color Matching: Due to color variations on different monitors and color printers, actual swatch colors may vary slightly. Please request a memo sample from Mayer Fabrics to ensure proper color representation.

CLEANING & MAINTENANCE

CFC: Coated Fabrics Cleaning - When a spill/stain occurs wipe immediately with a clean dry cloth. Carefully remove the majority of the stain then follow the steps below.

Soap & Water - Remove ordinary dirt and smudges with a mild soap and water solution using a soft cloth or towel. Rinse with fresh water and wipe dry.

Non-abrasive Cleaners - If residue remains, use a straight application of the following cleaners: Fantastik or 409 and gently clean with a soft cloth. Rinse with fresh water and wipe dry.

Isopropyl Alcohol - More stubborn stains may be eliminated using a cotton cloth soaked in 70-91% isopropyl (rubbing) alcohol. Wipe without spreading stain to surrounding area. A second application should be applied with vigorous rubbing in a circular motion. For highly textured material, a soft brush is recommended to clean valleys and crevices. Rinse with fresh water and wipe dry.

BC: Bleach Cleanable - 1 parts bleach, 4 parts water = 20% bleach, 80% water solution. Do not clean / disinfect fabric for longer than 10 minutes using the 20% bleach solution. Always rinse promptly with clean water after applying the bleach solution. Failure to do so will void any and all warranties.

Write-Away products from Mayer Fabrics defies unsightly ink spots and paint stains. Take action 'right away' on Write-Away products by following the cleaning instructions for Ink Stains. Always rinse thoroughly with clean water.

SCORE COLORS (24)



Sable
SE-000



Bark
SE-010



Pecan
SE-020



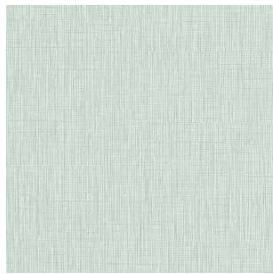
Rouge
SE-001



Basil
SE-003



Emerald
SE-013



Opal
SE-023



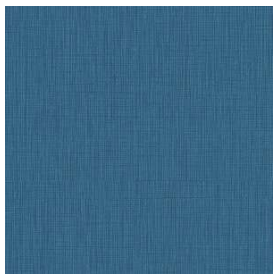
Aquamarine
SE-033



Indigo
SE-004



Midnight
SE-014



Cyan
SE-024



Turquoise
SE-034



Violet
SE-005



Black
SE-006



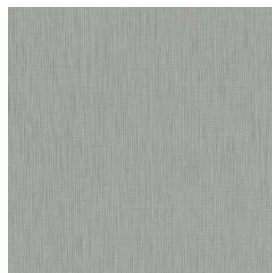
Slate
SE-016



Charcoal
SE-026



Smoke
SE-036



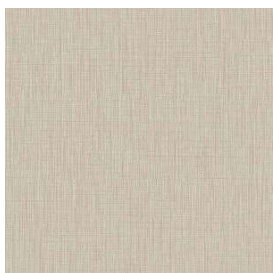
Aluminum
SE-046



Vanilla
SE-007



Frost
SE-017



Almond
SE-027



Pumice
SE-037



Raisin
SE-008



Spice
SE-009