

## PAVILION

PV-008, Elderberry  
Keystone Collection

### TECHNICAL INFORMATION

CATEGORY: Upholstery  
CONTENT: 80% Vinyl - Phthalate Free face, 20% Polyester backing  
BACKING: Polyester  
FINISH: Soil & Stain Resistant Top Coat with Ink Resistant Technology  
WIDTH: 54"  
WEIGHT: 31 oz./ln yd  
VISUAL REPEAT: 14 in/35.56 cm H, 12 in/30.48 cm V  
SHOWN RAILROADED: No  
DIRECTIONAL: Yes  
APPROX. ROLL SIZE: 30 yards  
APPLICATION: Indoor / Atrium

### PERFORMANCE



ABRASION RESISTANCE: Exceeds 250,000 Double Rubs\*  
(Wyzenbeek/Cotton Duck)  
BREAKING STRENGTH: Warp 137.6 / Fill 150.8  
COLORFASTNESS TO CROCKING: Dry: Class 4/Wet: Class 4  
COLORFASTNESS TO LIGHT: 200 hours  
SEAM STRENGTH: Warp 50.4 / Fill 64.3  
COLD CRACK: -20 °F

\* Multiple factors affect fabric durability and appearance retention, including end-user application and proper maintenance.  
Wyzenbeek results above 100,000 double rubs have not been shown to be an indicator of increased lifespan.

### FLAMMABILITY

PASSES CAL TB 117-2013  
NFPA 260/UFAC CLASS 1  
AB 2998 COMPLIANT



### REDUCED ENVIRONMENTAL IMPACT

GREENGUARD GOLD CERTIFIED  
PHTHALATE FREE  
PFAS FREE  
NO FR ADDITIVES  
NO ANTIMICROBIAL ADDITIVES  
NO ANTIBACTERIAL ADDITIVES  
MINDFUL MATERIALS COMPLIANT  
BPA FREE  
FORMALDEHYDE FREE  
VEGAN COMPLIANT  
TRIS FREE  
PROP 65 COMPLIANT  
REACH COMPLIANT  
ROHS COMPLIANT  
CFFA HEALTHCARE 201 COMPLIANT

## WARRANTY

STANDARD UPHOLSTERY | '5' FIVE YEAR WARRANTY  
See [Warranty Terms](#) for more information.

## DYE TRANSFER DISCLAIMER

Certain clothing and accessory dyes (such as those used on denim jeans) may migrate to lighter colors. This phenomenon is increased by humidity and temperature and is irreversible. Mayer Fabrics will not assume responsibility for dye transfer caused by external contaminants. Please check compatibility when using this product in combination with painted or varnished surfaces.

## ADDITIONAL INFORMATION

Custom Colors: All patterns can be custom colored. Minimum yardage applies.

Digital Swatch Color Matching: Due to color variations on different monitors and color printers, actual swatch colors may vary slightly. Please request a memo sample from Mayer Fabrics to ensure proper color representation.

## CLEANING & MAINTENANCE

W: Water-Based Cleaner - Spot clean, using the foam only from a water-based cleaning agent, such as a mild detergent or non-solvent upholstery shampoo product. Apply foam with a soft brush in a circular motion. Always rinse promptly with clean water. Vacuum when dry. Pretest small area before proceeding.

CFC: Coated Fabrics Cleaning - When a spill/stain occurs wipe immediately with a clean dry cloth. Carefully remove the majority of the stain then follow the steps below.

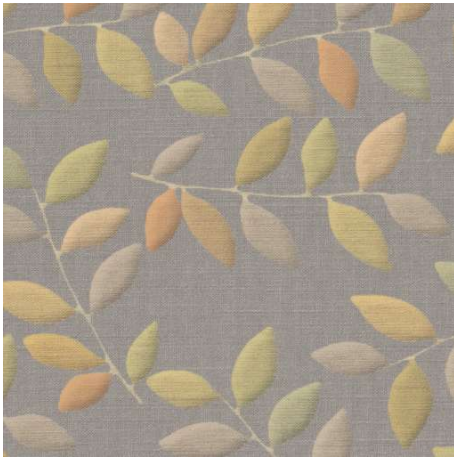
Soap & Water - Remove ordinary dirt and smudges with a mild soap and water solution using a soft cloth or towel. Rinse with fresh water and wipe dry.

Non-abrasive Cleaners - If residue remains, use a straight application of the following cleaners: Fantastik or 409 and gently clean with a soft cloth. Rinse with fresh water and wipe dry.

Isopropyl Alcohol - More stubborn stains may be eliminated using a cotton cloth soaked in 70-91% isopropyl (rubbing) alcohol. Wipe without spreading stain to surrounding area. A second application should be applied with vigorous rubbing in a circular motion. For highly textured material, a soft brush is recommended to clean valleys and crevices. Rinse with fresh water and wipe dry.

BC: Bleach Cleanable - 1 parts bleach, 9 parts water = 10% bleach, 90% water solution. Do not clean / disinfect fabric for longer than 10 minutes using the 10% bleach solution. Always rinse promptly with clean water after applying the bleach solution. Failure to do so will void any and all warranties.

PAVILION COLORS (6)



**Wheat**  
PV-002



**Eucalyptus**  
PV-003



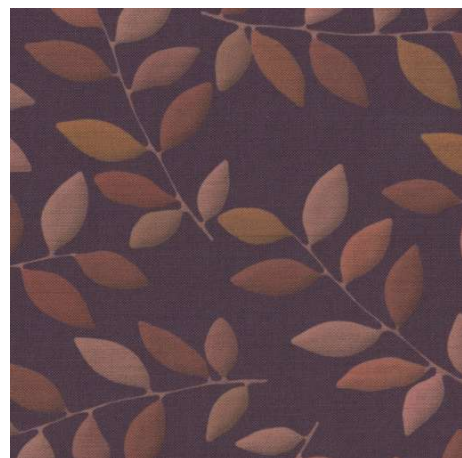
**Neptune**  
PV-004



**Nightfall**  
PV-006



**Sisal**  
PV-007



**Elderberry**  
PV-008