

## ENLIVEN

PC9-005, Lavender  
Keystone Collection

### TECHNICAL INFORMATION

CATEGORY: Drapery & Privacy Curtains  
CONTENT: 53% Polyester/47% Post-Consumer Recycled FR Polyester  
FINISH: None  
WIDTH: 72"  
WEIGHT: 11.4 oz./ln yd  
VISUAL REPEAT: 12 in/30.48 cm H, 16.75 in/42.54 cm V  
SHOWN RAILROADED: Yes  
DIRECTIONAL: Yes  
APPROX. ROLL SIZE: 100 yards

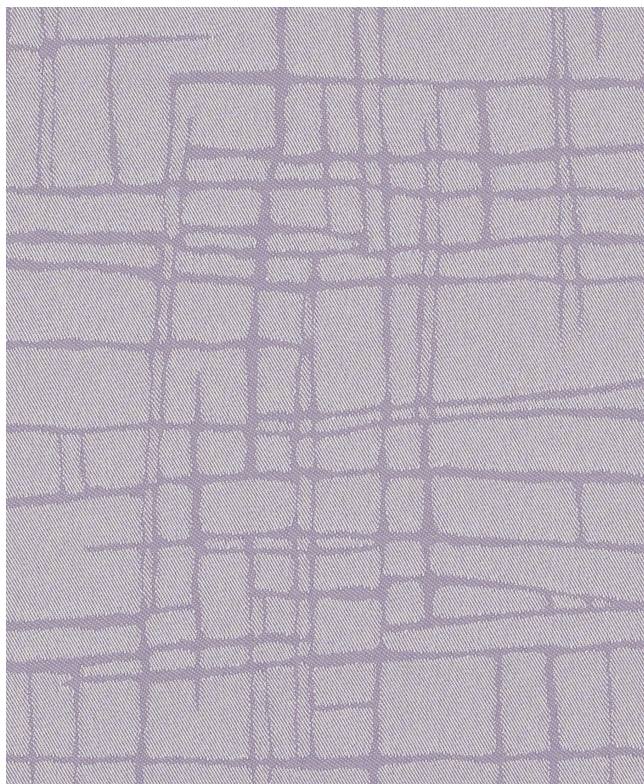
### PERFORMANCE



COLORFASTNESS TO CROCKING: Dry: Class 4 min/Wet: Class 4 min  
COLORFASTNESS TO LIGHT: 4 min at 40 hours  
SEAM SLIPPAGE: Warp 25.0 / Fill 25.0

### FLAMMABILITY

PASSES CAN/ULC-S109-14  
NFPA 701 (TEST#1)



### REDUCED ENVIRONMENTAL IMPACT

GREENGUARD GOLD CERTIFIED  
PFAS FREE  
NO FR ADDITIVES  
NO ANTIMICROBIAL ADDITIVES  
NO ANTIBACTERIAL ADDITIVES  
PROP 65 COMPLIANT  
REACH COMPLIANT  
MILLED IN AMERICA  
RED LIST FREE  
DOES NOT CONTAIN CONFLICT MINERALS  
BERRY COMPLIANT

## WARRANTY

PRIVACY CURTAIN | '3' THREE YEAR WARRANTY  
See [Warranty Terms](#) for more information.

## ADDITIONAL INFORMATION

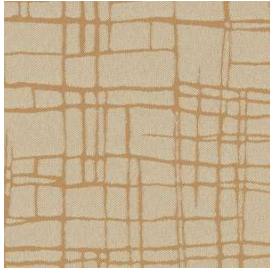
Custom Colors: All patterns can be custom colored. Minimum yardage applies.

Digital Swatch Color Matching: Due to color variations on different monitors and color printers, actual swatch colors may vary slightly. Please request a memo sample from Mayer Fabrics to ensure proper color representation.

## CLEANING & MAINTENANCE

PC: Privacy Curtains Cleaning Info - Wash Cycle: Process Cubicle fabric as any ordinary colored fabric, temperature not to exceed 160F. Use a synthetic detergent. Add softener to the last rinse cycle. Extracting Cycle: Fabric requires no more than 2-4 min. extracting, depending on size of load and equipment used. Drying Cycle: Do not overload dryer. Tumble dry for 3-5 min. on synthetic cycle 110F. As with all polyester fabrics, excessive heat will detract from the permanent press characteristics of this fabric. Finishing: If fabric is folded upon completion of the drying cycle, no finishing is required. Occasional light touch-up with a hand iron (275F max), or using a flat bed press with covered head may be desired for smoother seams. Important: Use cover cloth between fabric and iron or pressing head. Avoid prolonged contact with heat. Notes: Do not use caustic soap or bleach. Do not put through a mangler.

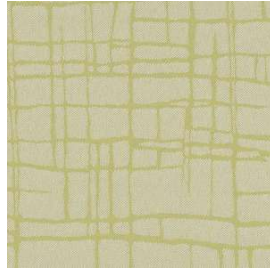
**ENLIVEN COLORS (17)**



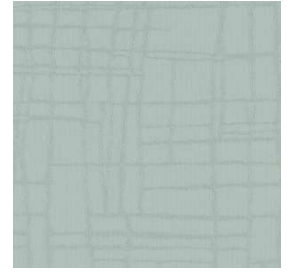
**Sunshine**  
PC9-002



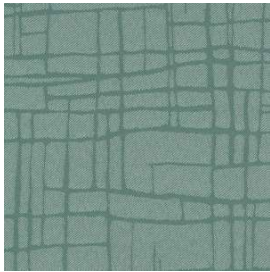
**Buttercream**  
PC9-012



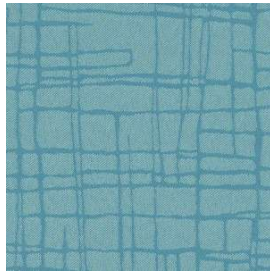
**Green Tea**  
PC9-003



**Ocean**  
PC9-013



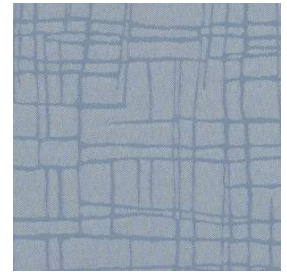
**Emerald**  
PC9-023



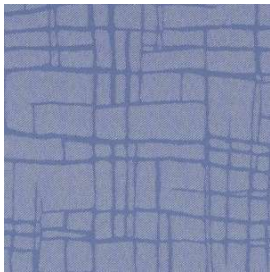
**Turquoise**  
PC9-033



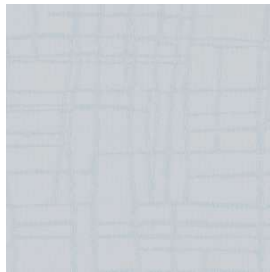
**Seafoam**  
PC9-043



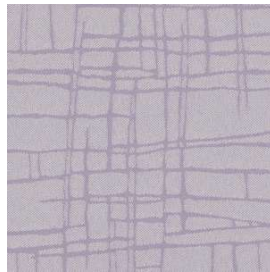
**Sky Blue**  
PC9-004



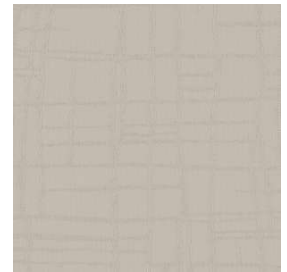
**Periwinkle**  
PC9-014



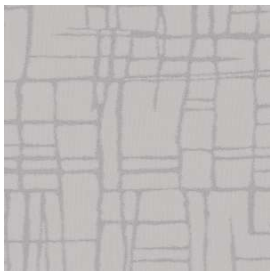
**Arctic**  
PC9-024



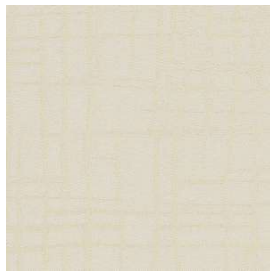
**Lavender**  
PC9-005



**Taupe**  
PC9-006



**Fog**  
PC9-016



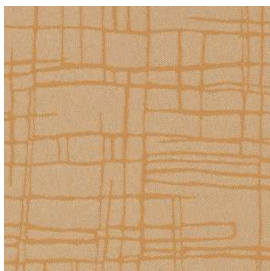
**Ecru**  
PC9-007



**Abalone**  
PC9-017



**Iris**  
PC9-008



**Mango**  
PC9-009