

RIPPLE

PC21-004, Water  
Seaqual Intiative Collection  
Vitality Collection

TECHNICAL INFORMATION

CATEGORY: Drapery & Privacy Curtains  
CONTENT: 53% FR Polyester/47% Recycled Polyester (25% SEAQUAL® YARN Post-/22% Post-Consumer)  
BACKING  
FINISH: None  
WIDTH: 72"  
WEIGHT: 9.95 oz./ln yd  
VISUAL REPEAT: 36.375 in/92.39 cm H, 33 in/83.82 cm V  
SHOWN RAILROADED: Yes  
DIRECTIONAL: Yes  
APPROX. ROLL SIZE: 60 yards  
APPLICATION: Indoor

PERFORMANCE



BREAKING STRENGTH: Warp 219.0 / Fill 134.0  
COLORFASTNESS TO CROCKING: Dry: Class 4 min/Wet: Class 3 min  
COLORFASTNESS TO LIGHT: 60 hours  
SEAM SLIPPAGE: Warp 44.0 / Fill 63.0

FLAMMABILITY

PASSES CAN/ULC-S109-14  
NFPA 701 (TEST#1)



REDUCED ENVIRONMENTAL IMPACT

GREENGUARD GOLD CERTIFIED  
PFAS FREE  
NO FR ADDITIVES  
HHI / GREENHEALTH COMPLIANT  
NO ANTIMICROBIAL ADDITIVES  
NO ANTIBACTERIAL ADDITIVES  
MINDFUL MATERIALS COMPLIANT  
BPA FREE  
FORMALDEHYDE FREE  
TRIS FREE  
HPD AVAILABLE  
PROP 65 COMPLIANT  
MILLED IN AMERICA  
REACH COMPLIANT  
ROHS COMPLIANT  
DOES NOT CONTAIN CONFLICT MINERALS

**WARRANTY**

PRIVACY CURTAIN | '3' THREE YEAR WARRANTY  
See [Warranty Terms](#) for more information.

**DYE TRANSFER DISCLAIMER**

Certain clothing and accessory dyes (such as those used on denim jeans) may migrate to lighter colors. This phenomenon is increased by humidity and temperature and is irreversible. Mayer Fabrics will not assume responsibility for dye transfer caused by external contaminants. Please check compatibility when using this product in combination with painted or varnished surfaces.

**ADDITIONAL INFORMATION**

Custom Colors: All patterns can be custom colored. Minimum yardage applies.

Digital Swatch Color Matching: Due to color variations on different monitors and color printers, actual swatch colors may vary slightly. Please request a memo sample from Mayer Fabrics to ensure proper color representation.

**SEAQUAL**  
INITIATIVE



% of sales from this pattern will be donated to The Common Thread for the Cure.

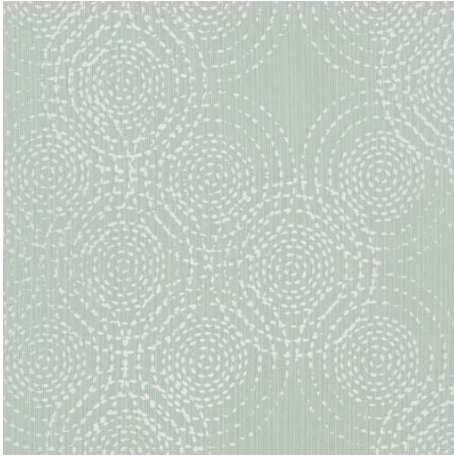
**CLEANING & MAINTENANCE**

WS: Water/Solvent Cleaner - Spot clean with a mild solvent, an upholstery shampoo, or the foam from a mild detergent. When using a solvent or dry cleaning product, follow instructions carefully and clean only in a well-ventilated room. Avoid any product that contains carbon tetrachloride or other toxic materials. With either method, pretest a small area before proceeding. Always rinse promptly with clean water.

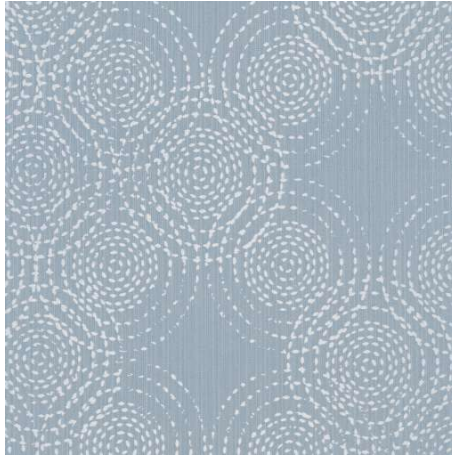
PC: Privacy Curtains Cleaning Info - Wash Cycle: Process Cubicle fabric as any ordinary colored fabric, temperature not to exceed 160F. Use a synthetic detergent. Add softener to the last rinse cycle. Extracting Cycle: Fabric requires no more than 2-4 min. extracting, depending on size of load and equipment used. Drying Cycle: Do not overload dryer. Tumble dry for 3-5 min. on synthetic cycle 110F. As with all polyester fabrics, excessive heat will detract from the permanent press characteristics of this fabric. Finishing: If fabric is folded upon completion of the drying cycle, no finishing is required. Occasional light touch-up with a hand iron (275F max), or using a flat bed press with covered head may be desired for smoother seams. Important: Use cover cloth between fabric and iron or pressing head. Avoid prolonged contact with heat. Notes: Do not use caustic soap or bleach. Do not put through a mangle.

BC: Bleach Cleanable - 1 parts bleach, 9 parts water = 10% bleach, 90% water solution. Do not clean / disinfect fabric for longer than 10 minutes using the 10% bleach solution. Always rinse promptly with clean water after applying the bleach solution. Failure to do so will void any and all warranties.

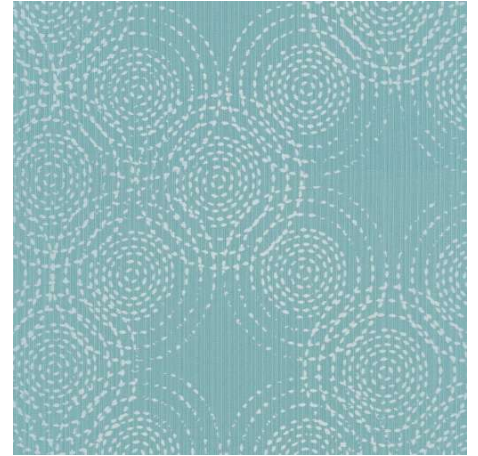
**RIPPLE COLORS (7)**



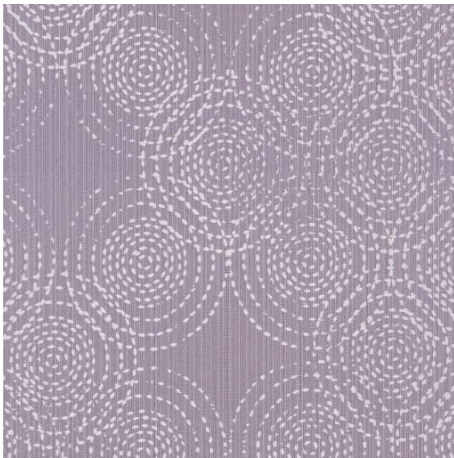
**Lily Pad**  
PC21-003



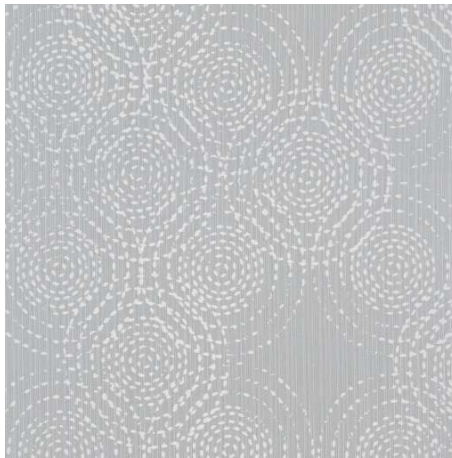
**Water**  
PC21-004



**Creek**  
PC21-014



**Orchid**  
PC21-005



**Bedrock**  
PC21-006



**Taupe**  
PC21-007



**Abalone**  
PC21-017