

SERENE

PC18-004, Slate
Seaqual Intiative Collection

TECHNICAL INFORMATION

CATEGORY: Drapery & Privacy Curtains
CONTENT: 54% FR Polyester/46% Recycled Polyester (23% SEAQUAL® YARN Post-/23% Post-Consumer)
BACKING
FINISH: None
WIDTH: 72"
WEIGHT: 10.08 oz./ln yd
VISUAL REPEAT: 24.875 in/63.18 cm H, 22.75 in/57.78 cm V
SHOWN RAILROADED: Yes
DIRECTIONAL: Yes
APPROX. ROLL SIZE: 50 yards
APPLICATION: Indoor

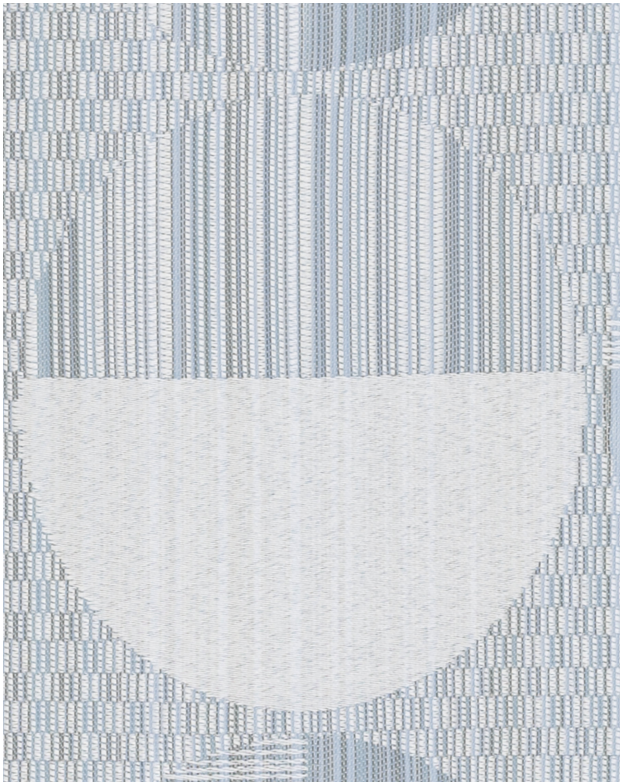
PERFORMANCE



BREAKING STRENGTH: Warp 440.0 / Fill 335.0
COLORFASTNESS TO CROCKING: Dry: Class 4 min/Wet: Class 3 min
COLORFASTNESS TO LIGHT: 60 hours
SEAM SLIPPAGE: Warp 47.0 / Fill 81.0

FLAMMABILITY

PASSES CAN/ULC-S109-14
NFPA 701 (TEST#1)



REDUCED ENVIRONMENTAL IMPACT

GREENGUARD GOLD CERTIFIED
PFAS FREE
NO FR ADDITIVES
HHI / GREENHEALTH COMPLIANT
NO ANTIMICROBIAL ADDITIVES
NO ANTIBACTERIAL ADDITIVES
MINDFUL MATERIALS COMPLIANT
BPA FREE
FORMALDEHYDE FREE
HPD AVAILABLE
PROP 65 COMPLIANT
MILLED IN AMERICA
REACH COMPLIANT
ROHS COMPLIANT
DOES NOT CONTAIN CONFLICT MINERALS

WARRANTY

PRIVACY CURTAIN | '3' THREE YEAR WARRANTY
See [Warranty Terms](#) for more information.

DYE TRANSFER DISCLAIMER

Certain clothing and accessory dyes (such as those used on denim jeans) may migrate to lighter colors. This phenomenon is increased by humidity and temperature and is irreversible. Mayer Fabrics will not assume responsibility for dye transfer caused by external contaminants. Please check compatibility when using this product in combination with painted or varnished surfaces.

ADDITIONAL INFORMATION

Custom Colors: All patterns can be custom colored. Minimum yardage applies.

Digital Swatch Color Matching: Due to color variations on different monitors and color printers, actual swatch colors may vary slightly. Please request a memo sample from Mayer Fabrics to ensure proper color representation.

SEAQUAL
INITIATIVE



% of sales from this pattern will be donated to The Common Thread for the Cure.

CLEANING & MAINTENANCE

WS: Water/Solvent Cleaner - Spot clean with a mild solvent, an upholstery shampoo, or the foam from a mild detergent. When using a solvent or dry cleaning product, follow instructions carefully and clean only in a well-ventilated room. Avoid any product that contains carbon tetrachloride or other toxic materials. With either method, pretest a small area before proceeding. Always rinse promptly with clean water.

PC: Privacy Curtains Cleaning Info - Wash Cycle: Process Cubicle fabric as any ordinary colored fabric, temperature not to exceed 160F. Use a synthetic detergent. Add softener to the last rinse cycle. Extracting Cycle: Fabric requires no more than 2-4 min. extracting, depending on size of load and equipment used. Drying Cycle: Do not overload dryer. Tumble dry for 3-5 min. on synthetic cycle 110F. As with all polyester fabrics, excessive heat will detract from the permanent press characteristics of this fabric. Finishing: If fabric is folded upon completion of the drying cycle, no finishing is required. Occasional light touch-up with a hand iron (275F max), or using a flat bed press with covered head may be desired for smoother seams. Important: Use cover cloth between fabric and iron or pressing head. Avoid prolonged contact with heat. Notes: Do not use caustic soap or bleach. Do not put through a mangle.

BC: Bleach Cleanable - 1 parts bleach, 9 parts water = 10% bleach, 90% water solution. Do not clean / disinfect fabric for longer than 10 minutes using the 10% bleach solution. Always rinse promptly with clean water after applying the bleach solution. Failure to do so will void any and all warranties.

SERENE COLORS (5)



Spring
PC18-003



Slate
PC18-004



Plum
PC18-005



Sandstone
PC18-007



Terra
PC18-009