

EMBELLISH

PC17-003, Arbor

Stitch Collection

TECHNICAL INFORMATION

CATEGORY: Drapery & Privacy Curtains
CONTENT: 54% Recycled Polyester (27% Pre-/27% Post-Consumer)/46% FR Polyester
FINISH: None
WIDTH: 72"
WEIGHT: 13.86 oz./ln yd
VISUAL REPEAT: 40.42 in/102.67 cm H, 1.94 in/4.93 cm V
SHOWN RAILROADED: Yes
DIRECTIONAL: No
APPROX. ROLL SIZE: 65 yards

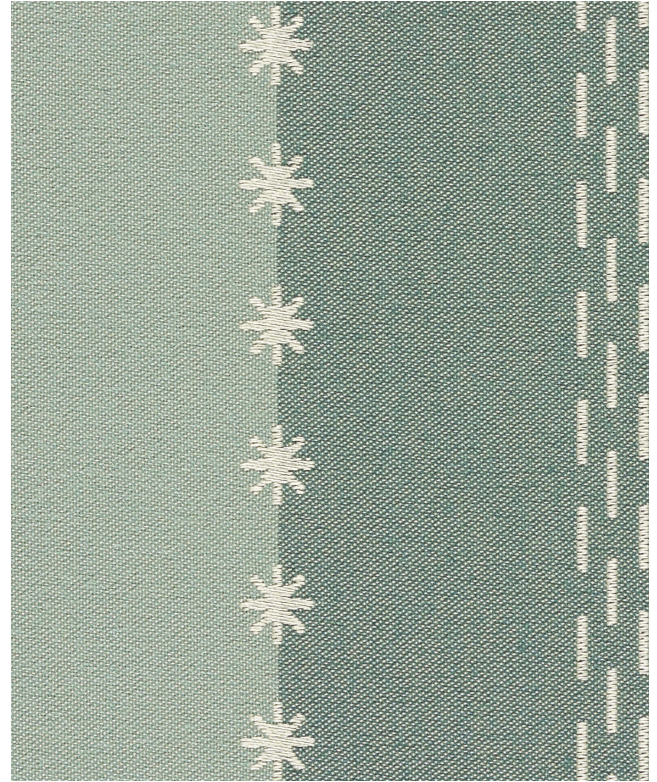
PERFORMANCE



BREAKING STRENGTH: Warp 254.0 / Fill 188.0
COLORFASTNESS TO CROCKING: Dry: Class 4 min/Wet: Class 3 min
COLORFASTNESS TO LIGHT: 4 min at 60 hours
SEAM SLIPPAGE: Warp 107.0 / Fill 115.0

FLAMMABILITY

PASSES CAL TB 117-2013
NFPA 260/UFAC CLASS 1
NFPA 701 (TEST#1)



REDUCED ENVIRONMENTAL IMPACT

GREENGUARD GOLD CERTIFIED
PFAS FREE
HHI / GREENHEALTH COMPLIANT
NO ANTIMICROBIAL ADDITIVES
PROP 65 COMPLIANT
MILLED IN AMERICA
DOES NOT CONTAIN CONFLICT MINERALS

WARRANTY

PRIVACY CURTAIN | '3' THREE YEAR WARRANTY
See [Warranty Terms](#) for more information.

ADDITIONAL INFORMATION

Custom Colors: All patterns can be custom colored. Minimum yardage applies.

Digital Swatch Color Matching: Due to color variations on different monitors and color printers, actual swatch colors may vary slightly. Please request a memo sample from Mayer Fabrics to ensure proper color representation.



% of sales from this pattern will be donated to The Common Thread for the Cure.

CLEANING & MAINTENANCE

PC: Privacy Curtains Cleaning Info - Wash Cycle: Process Cubicle fabric as any ordinary colored fabric, temperature not to exceed 160F. Use a synthetic detergent. Add softener to the last rinse cycle. Extracting Cycle: Fabric requires no more than 2-4 min. extracting, depending on size of load and equipment used. Drying Cycle: Do not overload dryer. Tumble dry for 3-5 min. on synthetic cycle 110F. As with all polyester fabrics, excessive heat will detract from the permanent press characteristics of this fabric. Finishing: If fabric is folded upon completion of the drying cycle, no finishing is required. Occasional light touch-up with a hand iron (275F max), or using a flat bed press with covered head may be desired for smoother seams. Important: Use cover cloth between fabric and iron or pressing head. Avoid prolonged contact with heat. Notes: Do not use caustic soap or bleach. Do not put through a mangle.

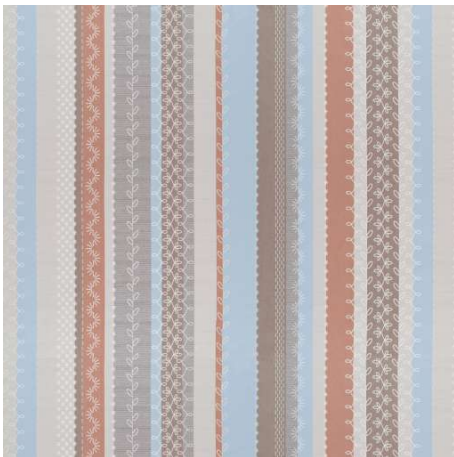
EMBELLISH COLORS (5)



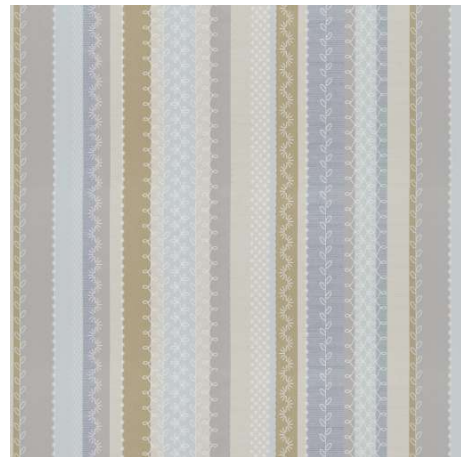
Arbor
PC17-003



Sky
PC17-004



Sunrise
PC17-014



Flax
PC17-007



Allspice
PC17-009