

## AKOYA

PC13-004, Seaside

Kindred Collection

### TECHNICAL INFORMATION

CATEGORY: Drapery & Privacy Curtains

CONTENT: 55% Polyester/45% FR Polyester

FINISH: None

WIDTH: 72"

WEIGHT: 12.24 oz./ln yd

VISUAL REPEAT: 10.0 in/25.40 cm H, 27.04 in/68.68 cm V

SHOWN RAILROADED: Yes

DIRECTIONAL: Yes

APPROX. ROLL SIZE: 60 yards

### PERFORMANCE



ABRASION RESISTANCE: n/a

BREAKING STRENGTH: Warp 100.0 / Fill 100.0

COLORFASTNESS TO CROCKING: Dry: Class 4/Wet: Class 3

COLORFASTNESS TO LIGHT: 60 hours

PILLING RESISTANCE: Class n/a

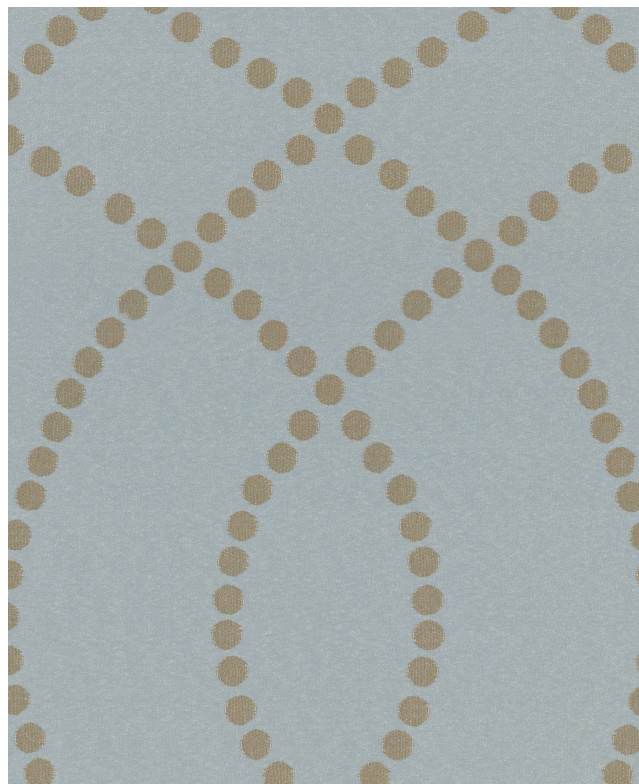
SEAM SLIPPAGE: Warp 97.0 / Fill 66.0

### FLAMMABILITY

PASSES CAL TB 117-2013

NFPA 260/UFAC CLASS 1

NFPA 701 (TEST#1)



### REDUCED ENVIRONMENTAL IMPACT

GREENGUARD GOLD CERTIFIED

PFAS FREE

MINDFUL MATERIALS COMPLIANT

PROP 65 COMPLIANT

MILLED IN AMERICA

REACH COMPLIANT

ROHS COMPLIANT

DOES NOT CONTAIN CONFLICT MINERALS

BERRY COMPLIANT

## WARRANTY

PRIVACY CURTAIN | '3' THREE YEAR WARRANTY  
See [Warranty Terms](#) for more information.

## ADDITIONAL INFORMATION

Custom Colors: All patterns can be custom colored. Minimum yardage applies.

Digital Swatch Color Matching: Due to color variations on different monitors and color printers, actual swatch colors may vary slightly. Please request a memo sample from Mayer Fabrics to ensure proper color representation.

## CLEANING & MAINTENANCE

PC: Privacy Curtains Cleaning Info - Wash Cycle: Process Cubicle fabric as any ordinary colored fabric, temperature not to exceed 160F. Use a synthetic detergent. Add softener to the last rinse cycle. Extracting Cycle: Fabric requires no more than 2-4 min. extracting, depending on size of load and equipment used. Drying Cycle: Do not overload dryer. Tumble dry for 3-5 min. on synthetic cycle 110F. As with all polyester fabrics, excessive heat will detract from the permanent press characteristics of this fabric. Finishing: If fabric is folded upon completion of the drying cycle, no finishing is required. Occasional light touch-up with a hand iron (275F max), or using a flat bed press with covered head may be desired for smoother seams. Important: Use cover cloth between fabric and iron or pressing head. Avoid prolonged contact with heat. Notes: Do not use caustic soap or bleach. Do not put through a mangler.