

MODE

MO-003, Celery

TECHNICAL INFORMATION

CATEGORY: Upholstery
 CONTENT: 81% Vinyl - Phthalate Free face, 19% Polyester backing
 BACKING: Polyester
 FINISH: Soil and Stain Resistant Top Coat
 WIDTH: 54"
 WEIGHT: 30 oz./ln yd
 SHOWN RAILROADED: No
 DIRECTIONAL: Yes
 APPROX. ROLL SIZE: 30 yards
 APPLICATION: Indoor / Atrium

PERFORMANCE



ABRASION RESISTANCE: Exceeds 100,000 Double Rubs*
 (Wyzenbeek/Cotton Duck)
 BREAKING STRENGTH: Warp 121.0 / Fill 72.0
 COLORFASTNESS TO CROCKING: Dry: Class 4/Wet: Class 4
 COLORFASTNESS TO LIGHT: 1000 hours
 PILLING RESISTANCE: Class n/a
 SEAM STRENGTH: Warp 46.0 / Fill 35.0
 DENIM DYE RESISTANT
 LIQUID BARRIER

* Multiple factors affect fabric durability and appearance retention, including end-user application and proper maintenance. Wyzenbeek results above 100,000 double rubs have not been shown to be an indicator of increased lifespan.

FLAMMABILITY

PASSES CAL TB 117-2013
 NFPA 260/UFAC CLASS 1
 AB 2998 COMPLIANT



REDUCED ENVIRONMENTAL IMPACT

GREENGUARD GOLD CERTIFIED
 PFAS FREE
 NO FR ADDITIVES
 NO ANTIMICROBIAL ADDITIVES
 NO ANTIBACTERIAL ADDITIVES
 MINDFUL MATERIALS COMPLIANT
 FORMALDEHYDE FREE
 VEGAN COMPLIANT
 PROP 65 COMPLIANT
 DOES NOT CONTAIN CONFLICT MINERALS
 CFFA HEALTHCARE 201 COMPLIANT

WARRANTY

STANDARD UPHOLSTERY | '5' FIVE YEAR WARRANTY
See [Warranty Terms](#) for more information.

DYE TRANSFER DISCLAIMER

Certain clothing and accessory dyes (such as those used on denim jeans) may migrate to lighter colors. This phenomenon is increased by humidity and temperature and is irreversible. Mayer Fabrics will not assume responsibility for dye transfer caused by external contaminants. Please check compatibility when using this product in combination with painted or varnished surfaces.

ADDITIONAL INFORMATION

Custom Colors: All patterns can be custom colored. Minimum yardage applies.

Digital Swatch Color Matching: Due to color variations on different monitors and color printers, actual swatch colors may vary slightly. Please request a memo sample from Mayer Fabrics to ensure proper color representation.

CLEANING & MAINTENANCE

CFC: Coated Fabrics Cleaning - When a spill/stain occurs wipe immediately with a clean dry cloth. Carefully remove the majority of the stain then follow the steps below.

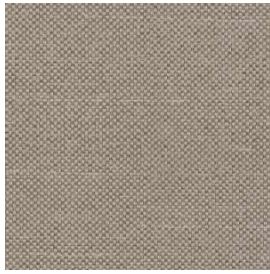
Soap & Water - Remove ordinary dirt and smudges with a mild soap and water solution using a soft cloth or towel. Rinse with fresh water and wipe dry.

Non-abrasive Cleaners - If residue remains, use a straight application of the following cleaners: Fantastik or 409 and gently clean with a soft cloth. Rinse with fresh water and wipe dry.

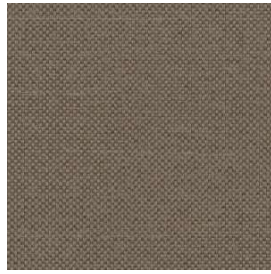
Isopropyl Alcohol - More stubborn stains may be eliminated using a cotton cloth soaked in 70-91% isopropyl (rubbing) alcohol. Wipe without spreading stain to surrounding area. A second application should be applied with vigorous rubbing in a circular motion. For highly textured material, a soft brush is recommended to clean valleys and crevices. Rinse with fresh water and wipe dry.

BC: Bleach Cleanable - 1 parts bleach, 9 parts water = 10% bleach, 90% water solution. Do not clean / disinfect fabric for longer than 10 minutes using the 10% bleach solution. Always rinse promptly with clean water after applying the bleach solution. Failure to do so will void any and all warranties.

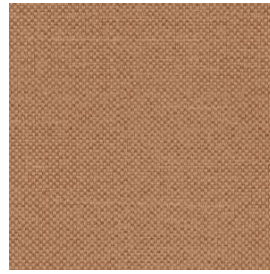
MODE COLORS (18)



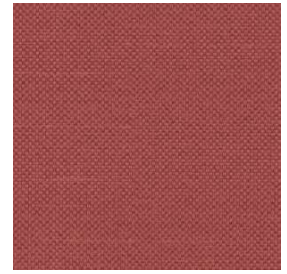
Burlap
MO-000



Mocha
MO-010



Cinnamon
MO-020



Persimmon
MO-001



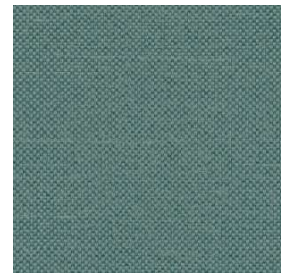
Paprika
MO-011



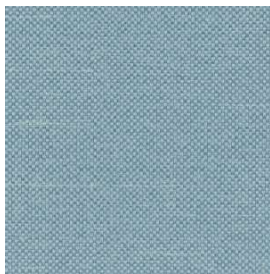
Straw
MO-002



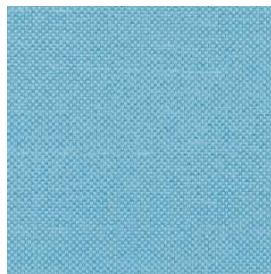
Celery
MO-003



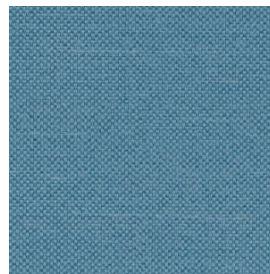
Jade
MO-013



Chambray
MO-004



Caribbean
MO-014



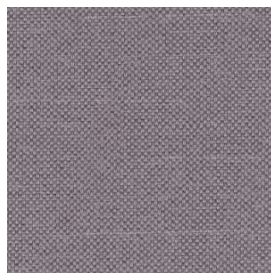
Denim
MO-024



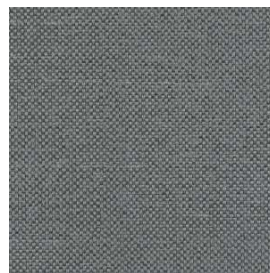
Ink
MO-034



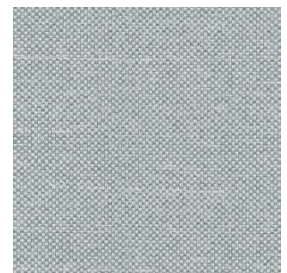
Spruce
MO-044



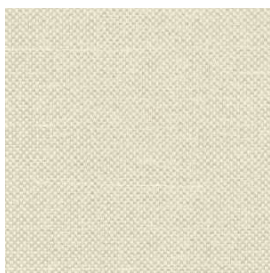
Orchid
MO-005



Pewter
MO-006



Silver
MO-016



Pearl
MO-007



Flax
MO-017