

MILANO

ML-020, Chestnut

TECHNICAL INFORMATION

CATEGORY: Upholstery
CONTENT: 80% Vinyl Phthalate Free face, 20% backing (15% Polyester, 5% Cotton)
BACKING: 75% Polyester, 25% Cotton
FINISH: None
WIDTH: 54"
WEIGHT: 36 oz./ln yd
SHOWN RAILROADED: No
DIRECTIONAL: Yes
APPROX. ROLL SIZE: 30 yards



PERFORMANCE



ABRASION RESISTANCE: Exceeds 100,000 Double Rubs*
(Wyzenbeek/Cotton Duck)
BREAKING STRENGTH: Warp 67.0 / Fill 78.0
COLORFASTNESS TO CROCKING: Dry: Class 4 min/Wet: Class 4 min
COLORFASTNESS TO LIGHT: 300 hours
PILLING RESISTANCE: Class N/A
SEAM STRENGTH: Warp 67.0 / Fill 64.0
DENIM DYE RESISTANT
LIQUID BARRIER

* Multiple factors affect fabric durability and appearance retention, including end-user application and proper maintenance.
Wyzenbeek results above 100,000 double rubs have not been shown to be an indicator of increased lifespan.

REDUCED ENVIRONMENTAL IMPACT

PFAS FREE
NO ANTIMICROBIAL ADDITIVES
NO ANTIBACTERIAL ADDITIVES
MINDFUL MATERIALS COMPLIANT
BPA FREE
FORMALDEHYDE FREE
VEGAN COMPLIANT
TRIS FREE
HPD AVAILABLE
PROP 65 COMPLIANT
REACH COMPLIANT
ROHS COMPLIANT
DOES NOT CONTAIN CONFLICT MINERALS

WARRANTY

STANDARD UPHOLSTERY | '5' FIVE YEAR WARRANTY
See [Warranty Terms](#) for more information.

DYE TRANSFER DISCLAIMER

Certain clothing and accessory dyes (such as those used on denim jeans) may migrate to lighter colors. This phenomenon is increased by humidity and temperature and is irreversible. Mayer Fabrics will not assume responsibility for dye transfer caused by external contaminants. Please check compatibility when using this product in combination with painted or varnished surfaces.

ADDITIONAL INFORMATION

Custom Colors: All patterns can be custom colored. Minimum yardage applies.

Digital Swatch Color Matching: Due to color variations on different monitors and color printers, actual swatch colors may vary slightly. Please request a memo sample from Mayer Fabrics to ensure proper color representation.

CLEANING & MAINTENANCE

WS: Water/Solvent Cleaner - Spot clean with a mild solvent, an upholstery shampoo, or the foam from a mild detergent. When using a solvent or dry cleaning product, follow instructions carefully and clean only in a well-ventilated room. Avoid any product that contains carbon tetrachloride or other toxic materials. With either method, pretest a small area before proceeding. Always rinse promptly with clean water.

CFC: Coated Fabrics Cleaning - When a spill/stain occurs wipe immediately with a clean dry cloth. Carefully remove the majority of the stain then follow the steps below.

Soap & Water - Remove ordinary dirt and smudges with a mild soap and water solution using a soft cloth or towel. Rinse with fresh water and wipe dry.

Non-abrasive Cleaners - If residue remains, use a straight application of the following cleaners: Fantastik or 409 and gently clean with a soft cloth. Rinse with fresh water and wipe dry.

Isopropyl Alcohol - More stubborn stains may be eliminated using a cotton cloth soaked in 70-91% isopropyl (rubbing) alcohol. Wipe without spreading stain to surrounding area. A second application should be applied with vigorous rubbing in a circular motion. For highly textured material, a soft brush is recommended to clean valleys and crevices. Rinse with fresh water and wipe dry.

BC: Bleach Cleanable - 1 parts bleach, 9 parts water = 10% bleach, 90% water solution. Do not clean / disinfect fabric for longer than 10 minutes using the 10% bleach solution. Always rinse promptly with clean water after applying the bleach solution. Failure to do so will void any and all warranties.

MILANO COLORS (11)



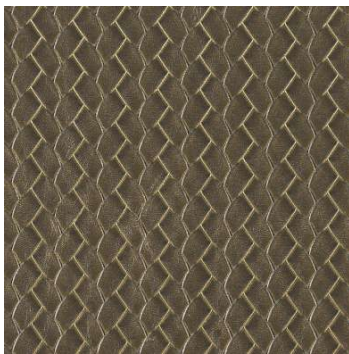
Bison
ML-000



Umber
ML-010



Chestnut
ML-020



Bronze
ML-030



Chianti
ML-001



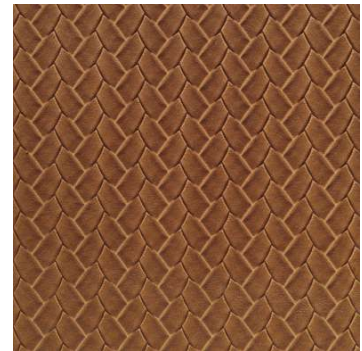
Old Gold
ML-002



Angus
ML-006



Pewter
ML-016



Caramel
ML-017



Doeskin
ML-027



Ecru
ML-037