

LARAMIE

LLA-016, Charcoal

TECHNICAL INFORMATION

CATEGORY: Leather

CONTENT: 100% Leather

BACKING

FINISH: Semi-aniline, solvent free Powered by Crypton

SHOWN RAILROADED: No

DIRECTIONAL: No

PERFORMANCE



FLAMMABILITY

PASSES NFPA 260/UFAC CLASS 1

AB 2998 COMPLIANT

BOSTON FIRE DEPT. CODE (BFD IX-1)

CAL 117 SECTION E

FMVSS 302

IMO A.652(16) 8.2

NY/NJ PORT AUTHORITY



REDUCED ENVIRONMENTAL IMPACT

PFAS FREE

NO FR ADDITIVES

HHI / GREENHEALTH COMPLIANT

MINDFUL MATERIALS COMPLIANT

PROP 65 COMPLIANT

MILLED IN AMERICA

DOES NOT CONTAIN CONFLICT MINERALS

BERRY COMPLIANT

WARRANTY

STANDARD UPHOLSTERY | '5' FIVE YEAR WARRANTY
See [Warranty Terms](#) for more information.

DYE TRANSFER DISCLAIMER

Certain clothing and accessory dyes (such as those used on denim jeans) may migrate to lighter colors. This phenomenon is increased by humidity and temperature and is irreversible. Mayer Fabrics will not assume responsibility for dye transfer caused by external contaminants. Please check compatibility when using this product in combination with painted or varnished surfaces.

ADDITIONAL INFORMATION

Custom Colors: All patterns can be custom colored. Minimum yardage applies.

Digital Swatch Color Matching: Due to color variations on different monitors and color printers, actual swatch colors may vary slightly. Please request a memo sample from Mayer Fabrics to ensure proper color representation.

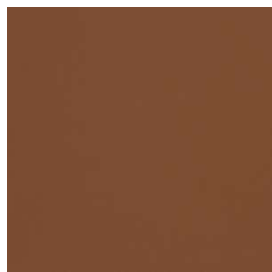
CLEANING & MAINTENANCE

LC: Leather with Crypton - Genuine leather requires the least care of all upholstery materials. Dusting with a clean dry cloth is the recommended routine cleaning method. For spots and spills, wipe excess liquid immediately and let air dry. If necessary, use lukewarm water with mild non-detergent soap, work into a thin lather with a soft cloth, rinse with clean water. Because of the Crypton finish, this leather is bleach cleanable with a cleaning solution that contains 10% bleach. Always rinse promptly with clean water and buff to restore lustre. Crypton Upholstery Cleaner can also be used.

LARAMIE COLORS (23)



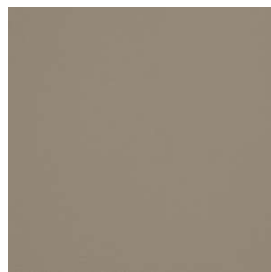
Cocoa
LLA-000



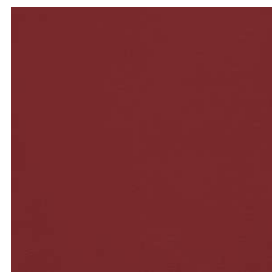
Saddle
LLA-010



Boulder
LLA-020



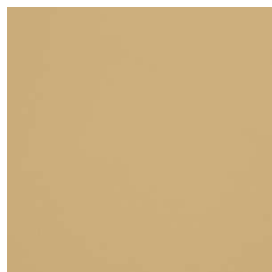
Cobblestone
LLA-030



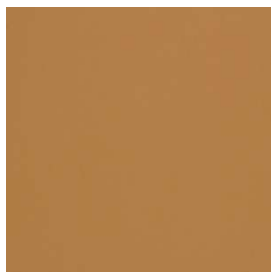
Ruby
LLA-001



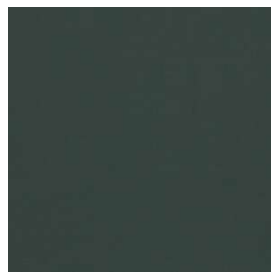
Poppy
LLA-011



Curry
LLA-002



Caramel
LLA-012



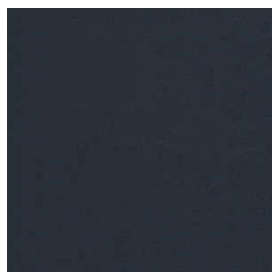
Orchard
LLA-003



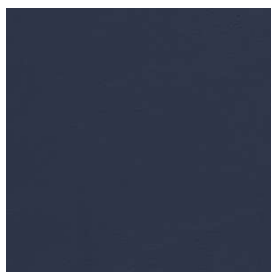
Artichoke
LLA-013



Wasabi
LLA-033



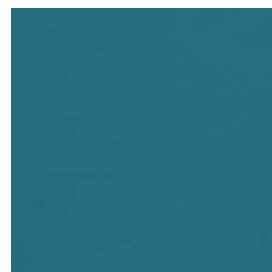
Indigo
LLA-004



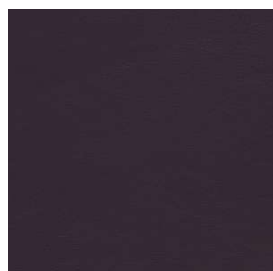
Sapphire
LLA-014



Marina
LLA-024



Calypso
LLA-034



Mulberry
LLA-005



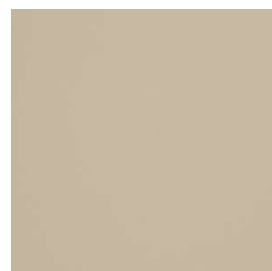
Ebony
LLA-006



Charcoal
LLA-016



Blue Stone
LLA-026



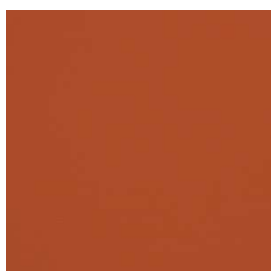
Pearl
LLA-007



Parchment
LLA-017



Merlot
LLA-008



Tangerine
LLA-009