

SAMURAI

LC905-000, Dark Slate

TECHNICAL INFORMATION

CATEGORY: Upholstery
CONTENT: 85% Wool/15% Nylon
BACKING: None
FINISH: None
WIDTH: 54"
WEIGHT: 17.31 oz./ln yd
VISUAL REPEAT: 0.12 in/0.30 cm H, 0.12 in/0.30 cm V
SHOWN RAILROADED: No
DIRECTIONAL: Yes
APPROX. ROLL SIZE: 50 yards

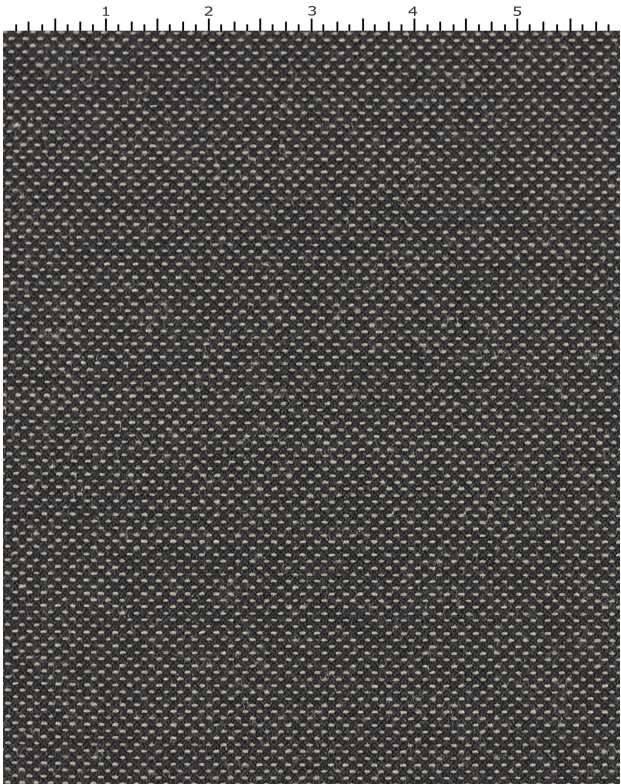
PERFORMANCE



ABRASION RESISTANCE: Exceeds 60,000 Cycles (Martindale/Cotton Duck)
BREAKING STRENGTH: Warp 241.0 / Fill 218.0
COLORFASTNESS TO CROCKING: Dry: Class 4 min/Wet: Class 4 min
COLORFASTNESS TO LIGHT: 60 hours
PILLING RESISTANCE: Class 5
SEAM SLIPPAGE: Warp 82.0 / Fill 58.0

FLAMMABILITY

PASSES CAL TB 117-2013
NFPA 260/UFAC CLASS 1
AB 2998 COMPLIANT



REDUCED ENVIRONMENTAL IMPACT

GREENGUARD GOLD CERTIFIED
HHI / GREENHEALTH COMPLIANT
MILLED IN AMERICA
REACH COMPLIANT
DOES NOT CONTAIN CONFLICT MINERALS

WARRANTY

STANDARD UPHOLSTERY | '5' FIVE YEAR WARRANTY
See [Warranty Terms](#) for more information.

DYE TRANSFER DISCLAIMER

Certain clothing and accessory dyes (such as those used on denim jeans) may migrate to lighter colors. This phenomenon is increased by humidity and temperature and is irreversible. Mayer Fabrics will not assume responsibility for dye transfer caused by external contaminants. Please check compatibility when using this product in combination with painted or varnished surfaces.

ADDITIONAL INFORMATION

Custom Colors: All patterns can be custom colored. Minimum yardage applies.

Digital Swatch Color Matching: Due to color variations on different monitors and color printers, actual swatch colors may vary slightly. Please request a memo sample from Mayer Fabrics to ensure proper color representation.

CLEANING & MAINTENANCE

S: Solvent Cleaner - Spot clean, using a mild water-free solvent or dry cleaning product. Clean only in a well-ventilated room and avoid any product containing carbon tetrachloride or other toxic materials. Pretest a small area before proceeding.