

KATAGAMI

LC904-014, Blue Paradise

TECHNICAL INFORMATION

CATEGORY: Upholstery

CONTENT: 85% Wool/15% Nylon

BACKING: None

FINISH: None

WIDTH: 54"

WEIGHT: 16.35 oz./ln yd

VISUAL REPEAT: 13.5 in/34.29 cm H, 31.94 in/81.13 cm V

SHOWN RAILROADED: No

DIRECTIONAL: Yes

APPROX. ROLL SIZE: 50 yards

PERFORMANCE



ABRASION RESISTANCE: Exceeds 60,000 Cycles (Martindale/Cotton Duck)

BREAKING STRENGTH: Warp 223.0 / Fill 164.0

COLORFASTNESS TO CROCKING: Dry: Class 4 min/Wet: Class 4 min

COLORFASTNESS TO LIGHT: 40 hours

PILLING RESISTANCE: Class 5

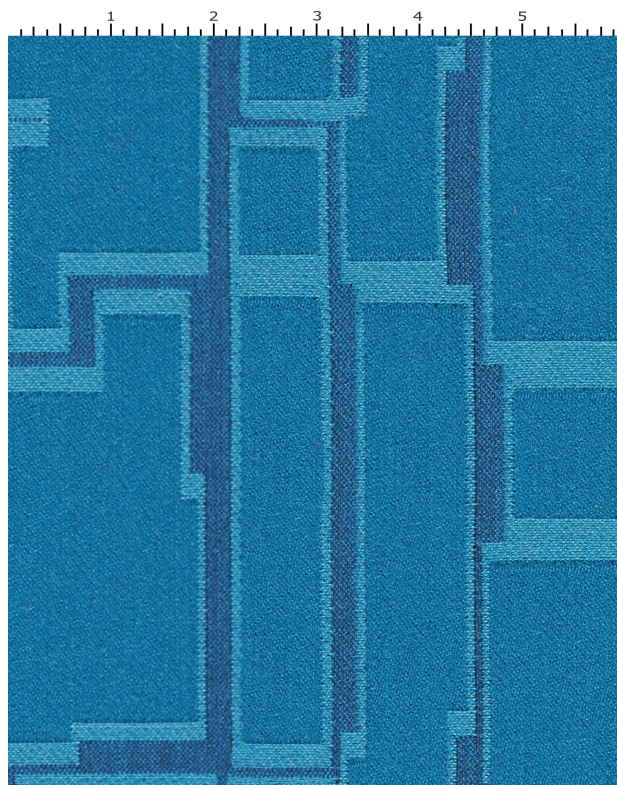
SEAM SLIPPAGE: Warp 80.0 / Fill 87.0

FLAMMABILITY

PASSES CAL TB 117-2013

NFPA 260/UFAC CLASS 1

AB 2998 COMPLIANT



REDUCED ENVIRONMENTAL IMPACT

GREENGUARD GOLD CERTIFIED

HHI / GREENHEALTH COMPLIANT

MILLED IN AMERICA

REACH COMPLIANT

DOES NOT CONTAIN CONFLICT MINERALS

WARRANTY

STANDARD UPHOLSTERY | '5' FIVE YEAR WARRANTY
See [Warranty Terms](#) for more information.

DYE TRANSFER DISCLAIMER

Certain clothing and accessory dyes (such as those used on denim jeans) may migrate to lighter colors. This phenomenon is increased by humidity and temperature and is irreversible. Mayer Fabrics will not assume responsibility for dye transfer caused by external contaminants. Please check compatibility when using this product in combination with painted or varnished surfaces.

ADDITIONAL INFORMATION

Custom Colors: All patterns can be custom colored. Minimum yardage applies.

Digital Swatch Color Matching: Due to color variations on different monitors and color printers, actual swatch colors may vary slightly. Please request a memo sample from Mayer Fabrics to ensure proper color representation.

CLEANING & MAINTENANCE

S: Solvent Cleaner - Spot clean, using a mild water-free solvent or dry cleaning product. Clean only in a well-ventilated room and avoid any product containing carbon tetrachloride or other toxic materials. Pretest a small area before proceeding.