

ICON

IC-004, Cadet

TECHNICAL INFORMATION

CATEGORY: Upholstery
 CONTENT: 80% Vinyl - Phthalate Free face, 20% Polyester backing
 BACKING: Polyester
 FINISH: Soil & Stain Resistant Top Coat with Ink Resistant Technology
 WIDTH: 54"
 WEIGHT: 31 oz./ln yd
 VISUAL REPEAT: None
 SHOWN RAILROADED: No
 DIRECTIONAL: Yes
 APPROX. ROLL SIZE: 30 yards
 APPLICATION: Indoor / Atrium

PERFORMANCE

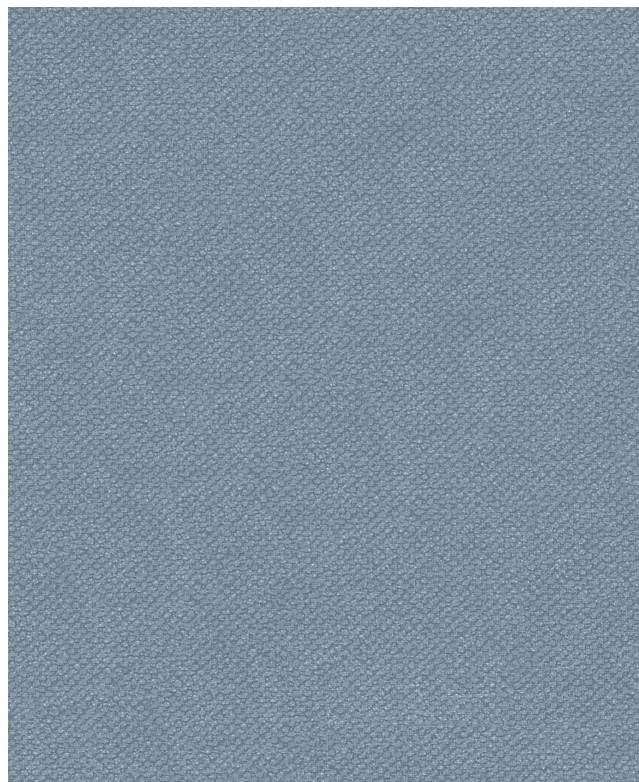


ABRASION RESISTANCE: Exceeds 1,000,000 Double Rubs*
 (Wyzenbeek/Cotton Duck)
 BREAKING STRENGTH: Warp 95.0 / Fill 73.0
 COLORFASTNESS TO CROCKING: Dry: Class Grade 5/Wet: Class Grade 5
 COLORFASTNESS TO LIGHT: 300 hours
 SEAM STRENGTH: Warp 48.8 / Fill 40.0
 COLD CRACK: -20 °F
 INK RESISTANT
 LIQUID BARRIER
 DENIM DYE RESISTANT

* Multiple factors affect fabric durability and appearance retention, including end-user application and proper maintenance.
 Wyzenbeek results above 100,000 double rubs have not been shown to be an indicator of increased lifespan.

FLAMMABILITY

PASSES CAL TB 117-2013
 NFPA 260/UFAC CLASS 1
 AB 2998 COMPLIANT
 FMVSS 302



REDUCED ENVIRONMENTAL IMPACT

GREENGUARD GOLD CERTIFIED
 PHTHALATE FREE
 PFAS FREE
 NO FR ADDITIVES
 NO ANTIMICROBIAL ADDITIVES
 NO ANTIBACTERIAL ADDITIVES
 MINDFUL MATERIALS COMPLIANT
 BPA FREE
 FORMALDEHYDE FREE
 VEGAN COMPLIANT
 TRIS FREE
 HPD AVAILABLE
 PROP 65 COMPLIANT
 REACH COMPLIANT
 ROHS COMPLIANT
 DOES NOT CONTAIN CONFLICT MINERALS

WARRANTY

STANDARD UPHOLSTERY | '5' FIVE YEAR WARRANTY
See [Warranty Terms](#) for more information.

DYE TRANSFER DISCLAIMER

Certain clothing and accessory dyes (such as those used on denim jeans) may migrate to lighter colors. This phenomenon is increased by humidity and temperature and is irreversible. Mayer Fabrics will not assume responsibility for dye transfer caused by external contaminants. Please check compatibility when using this product in combination with painted or varnished surfaces.

ADDITIONAL INFORMATION

Custom Colors: All patterns can be custom colored. Minimum yardage applies.

Digital Swatch Color Matching: Due to color variations on different monitors and color printers, actual swatch colors may vary slightly. Please request a memo sample from Mayer Fabrics to ensure proper color representation.

CLEANING & MAINTENANCE

WS: Water/Solvent Cleaner - Spot clean with a mild solvent, an upholstery shampoo, or the foam from a mild detergent. When using a solvent or dry cleaning product, follow instructions carefully and clean only in a well-ventilated room. Avoid any product that contains carbon tetrachloride or other toxic materials. With either method, pretest a small area before proceeding. Always rinse promptly with clean water.

CFC: Coated Fabrics Cleaning - When a spill/stain occurs wipe immediately with a clean dry cloth. Carefully remove the majority of the stain then follow the steps below.

Soap & Water - Remove ordinary dirt and smudges with a mild soap and water solution using a soft cloth or towel. Rinse with fresh water and wipe dry.

Non-abrasive Cleaners - If residue remains, use a straight application of the following cleaners: Fantastik or 409 and gently clean with a soft cloth. Rinse with fresh water and wipe dry.

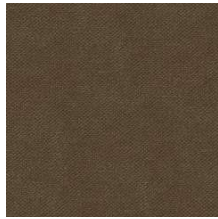
Isopropyl Alcohol - More stubborn stains may be eliminated using a cotton cloth soaked in 70-91% isopropyl (rubbing) alcohol. Wipe without spreading stain to surrounding area. A second application should be applied with vigorous rubbing in a circular motion. For highly textured material, a soft brush is recommended to clean valleys and crevices. Rinse with fresh water and wipe dry.

BC: Bleach Cleanable - 1 parts bleach, 9 parts water = 10% bleach, 90% water solution. Do not clean / disinfect fabric for longer than 10 minutes using the 10% bleach solution. Always rinse promptly with clean water after applying the bleach solution. Failure to do so will void any and all warranties.

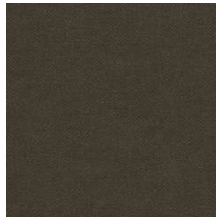
ICON COLORS (26)



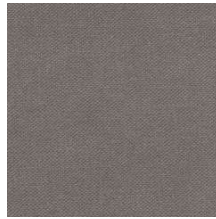
Rattan
IC-000



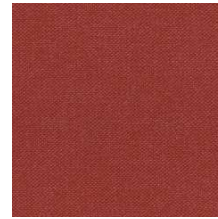
Coffee
IC-010



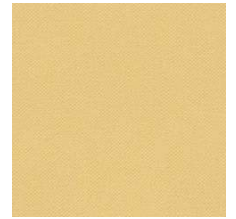
Earth
IC-020



Metal
IC-030



Sangria
IC-001



Lemon
IC-002



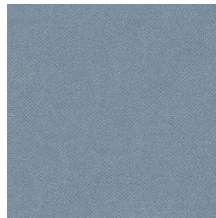
Celery
IC-003



Grass
IC-013



Spruce
IC-023



Cadet
IC-004



Ocean
IC-014



Aegean
IC-024



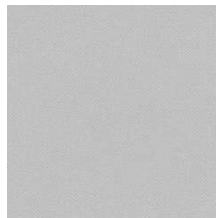
Marine
IC-034



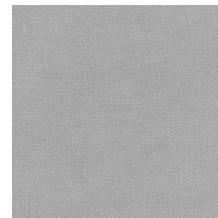
Indigo
IC-044



Raisin
IC-005



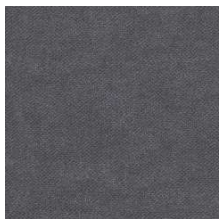
Silver
IC-006



Tin
IC-016



Pewter
IC-026



Steel
IC-036



Shadow
IC-046



Alabaster
IC-007



Sand
IC-017



Almond
IC-027



Copper
IC-009



Terra
IC-019



Spice
IC-029