

GAIA
GI-010, Teak
Hyphyn™ Collection

TECHNICAL INFORMATION

CATEGORY: Upholstery
CONTENT: 80% Hyphyn™ Biodegradable Vinyl face, 20% Hyphyn™ Biodegradable Polyester backing
BACKING: Hyphyn™ Biodegradable Polyester
FINISH: Soil & Stain Resistant Top Coat
WIDTH: 54"
WEIGHT: 31 oz./ln yd
VISUAL REPEAT: None
SHOWN RAILROADED: No
DIRECTIONAL: No
APPROX. ROLL SIZE: 30 yards
APPLICATION: Indoor / Atrium

PERFORMANCE



ABRASION RESISTANCE: Exceeds 250,000 Double Rubs*
(Wyzenbeek/Cotton Duck)
BREAKING STRENGTH: Warp 95.8 / Fill 82.2
COLORFASTNESS TO CROCKING: Dry: Class 5/Wet: Class 5
COLORFASTNESS TO LIGHT: 300 hours
SEAM STRENGTH: Warp 47.9 / Fill 46.1
COLD CRACK: -20 °F
LIQUID BARRIER

* Multiple factors affect fabric durability and appearance retention, including end-user application and proper maintenance.
Wyzenbeek results above 100,000 double rubs have not been shown to be an indicator of increased lifespan.

FLAMMABILITY

PASSES CAL TB 117-2013
NFPA 260/UFAC CLASS 1
AB 2998 COMPLIANT
FMVSS 302



REDUCED ENVIRONMENTAL IMPACT

GREENGUARD GOLD CERTIFIED
PHTHALATE FREE
PFAS FREE
NO FR ADDITIVES
NO ANTIMICROBIAL ADDITIVES
NO ANTIBACTERIAL ADDITIVES
MINDFUL MATERIALS COMPLIANT
BIODEGRADABLE
BPA FREE
FORMALDEHYDE FREE
VEGAN COMPLIANT
TRIS FREE
HPD AVAILABLE
PROP 65 COMPLIANT
REACH COMPLIANT
ROHS COMPLIANT
DOES NOT CONTAIN CONFLICT MINERALS

WARRANTY

STANDARD UPHOLSTERY | '5' FIVE YEAR WARRANTY
See [Warranty Terms](#) for more information.

DYE TRANSFER DISCLAIMER

Certain clothing and accessory dyes (such as those used on denim jeans) may migrate to lighter colors. This phenomenon is increased by humidity and temperature and is irreversible. Mayer Fabrics will not assume responsibility for dye transfer caused by external contaminants. Please check compatibility when using this product in combination with painted or varnished surfaces.

ADDITIONAL INFORMATION

Custom Colors: All patterns can be custom colored. Minimum yardage applies.

Digital Swatch Color Matching: Due to color variations on different monitors and color printers, actual swatch colors may vary slightly. Please request a memo sample from Mayer Fabrics to ensure proper color representation.

Hyphyn™ Material Content

Hyphyn™ Vinyl biodegrades over 90% within 24 months in landfill conditions, per ASTM D5511 testing. Its patented enzyme system activates only in anaerobic landfill environments, breaking down the material into inert components like CO₂, methane, and biomass without producing microplastics or harmful residues. Post-biodegradation soil tests confirm zero detectable chemicals of concern, with 100% plant germination in resulting soil, ensuring environmental safety.

CLEANING & MAINTENANCE

WS: Water/Solvent Cleaner - Spot clean with a mild solvent, an upholstery shampoo, or the foam from a mild detergent. When using a solvent or dry cleaning product, follow instructions carefully and clean only in a well-ventilated room. Avoid any product that contains carbon tetrachloride or other toxic materials. With either method, pretest a small area before proceeding. Always rinse promptly with clean water.

CFC: Coated Fabrics Cleaning - When a spill/stain occurs wipe immediately with a clean dry cloth. Carefully remove the majority of the stain then follow the steps below.

Soap & Water - Remove ordinary dirt and smudges with a mild soap and water solution using a soft cloth or towel. Rinse with fresh water and wipe dry.

Non-abrasive Cleaners - If residue remains, use a straight application of the following cleaners: Fantastik or 409 and gently clean with a soft cloth. Rinse with fresh water and wipe dry.

Isopropyl Alcohol - More stubborn stains may be eliminated using a cotton cloth soaked in 70-91% isopropyl (rubbing) alcohol. Wipe without spreading stain to surrounding area. A second application should be applied with vigorous rubbing in a circular motion. For highly textured material, a soft brush is recommended to clean valleys and crevices. Rinse with fresh water and wipe dry.

BC: Bleach Cleanable - 1 parts bleach, 9 parts water = 10% bleach, 90% water solution. Do not clean / disinfect fabric for longer than 10 minutes using the 10% bleach solution. Always rinse promptly with clean water after applying the bleach solution. Failure to do so will void any and all warranties.

GAIA COLORS (28)



Bronze
GI-000



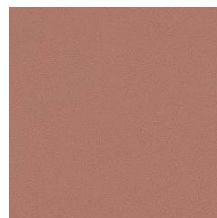
Teak
GI-010



Earth
GI-020



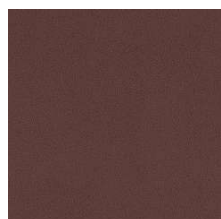
Mahogany
GI-030



Blush
GI-001



Malbec
GI-011



Brick
GI-021



Chardonnay
GI-002



Mint
GI-003



Willow
GI-013



Celery
GI-023



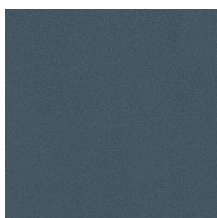
Alpine
GI-033



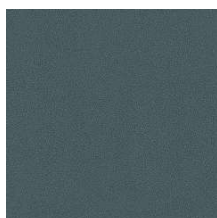
Billiard
GI-043



Agate
GI-004



Isle
GI-014



Ocean
GI-024



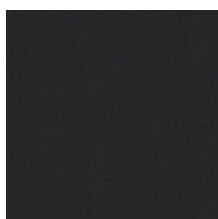
Naval
GI-034



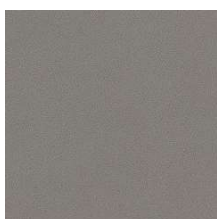
Midnight
GI-044



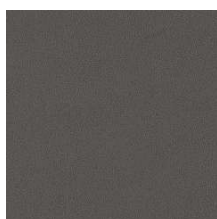
Raisin
GI-005



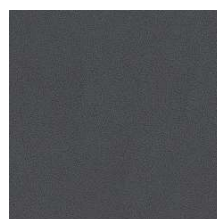
Shadow
GI-006



Metal
GI-016



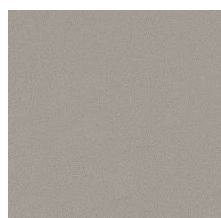
Ash
GI-026



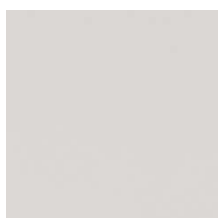
Coal
GI-036



Pumice
GI-007



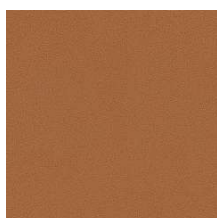
Bedrock
GI-017



Mist
GI-027



Dove Grey
GI-037



Penny
GI-009