

SPECIFICATIONS - SEQUEL PLUS NANO GUARD (409)

MAYER FABRICS

SEQUEL PLUS NANO GUARD

DB409-011, Port Sequel (Durablock)

TECHNICAL INFORMATION

CATEGORY: Upholstery
CONTENT: 100% Polyester
BACKING: DuraBlock barrier
FINISH: Nanotex®
WIDTH: 54"
WEIGHT: 13 oz./ln yd
VISUAL REPEAT: None
SHOWN RAILROADED: No
DIRECTIONAL: Yes
APPROX. ROLL SIZE: 60 yards

PERFORMANCE

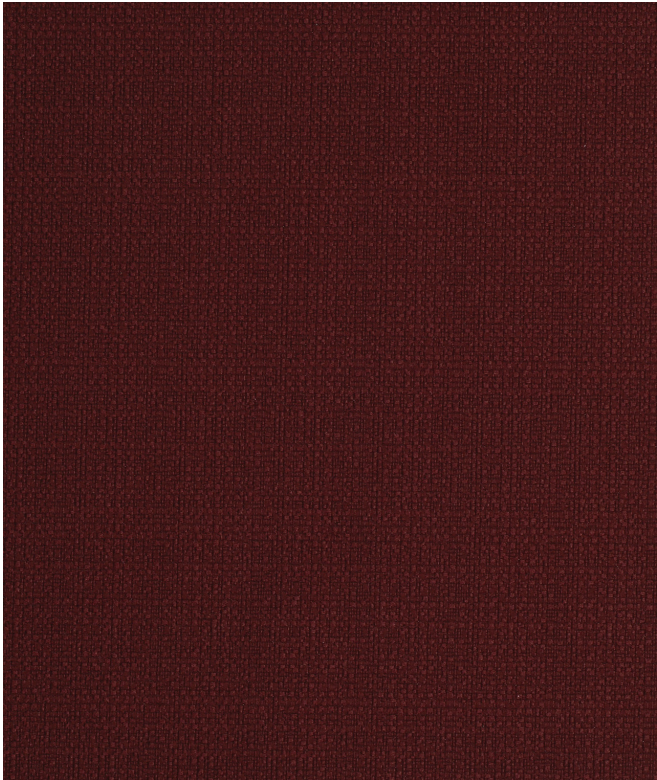


ABRASION RESISTANCE: Passes 288,000 Double Rubs*
(Wyzenbeek/Cotton Duck)
BREAKING STRENGTH: Warp 267.0 / Fill 271.0
COLORFASTNESS TO CROCKING: Dry: Class 4/Wet: Class 3
COLORFASTNESS TO LIGHT: 60 hours
PILLING RESISTANCE: Class 4
SEAM SLIPPAGE: Warp 35.0 / Fill 47.0
LIQUID BARRIER

* Multiple factors affect fabric durability and appearance retention, including end-user application and proper maintenance. Wyzenbeek results above 100,000 double rubs have not been shown to be an indicator of increased lifespan.

FLAMMABILITY

PASSES CAL TB 117-2013
NFPA 260/UFAC CLASS 1
AB 2998 COMPLIANT
CAL 117 SECTION E
MAY COMPLY WITH CAL. TECH. BUL. 133 WHEN COMBINED WITH APPROPRIATE COMPONENTS.



REDUCED ENVIRONMENTAL IMPACT

GREENGUARD GOLD CERTIFIED
NO FR ADDITIVES
MINDFUL MATERIALS COMPLIANT
MILLED IN AMERICA
DOES NOT CONTAIN CONFLICT MINERALS
BERRY COMPLIANT

SPECIFICATIONS - SEQUEL PLUS NANO GUARD (409) **MAYER**FABRICS

WARRANTY

STANDARD UPHOLSTERY | '5' FIVE YEAR WARRANTY
See [Warranty Terms](#) for more information.

DYE TRANSFER DISCLAIMER

Certain clothing and accessory dyes (such as those used on denim jeans) may migrate to lighter colors. This phenomenon is increased by humidity and temperature and is irreversible. Mayer Fabrics will not assume responsibility for dye transfer caused by external contaminants. Please check compatibility when using this product in combination with painted or varnished surfaces.

ADDITIONAL INFORMATION

Custom Colors: All patterns can be custom colored. Minimum yardage applies.

Digital Swatch Color Matching: Due to color variations on different monitors and color printers, actual swatch colors may vary slightly. Please request a memo sample from Mayer Fabrics to ensure proper color representation.

CLEANING & MAINTENANCE

WS: Water/Solvent Cleaner - Spot clean with a mild solvent, an upholstery shampoo, or the foam from a mild detergent. When using a solvent or dry cleaning product, follow instructions carefully and clean only in a well-ventilated room. Avoid any product that contains carbon tetrachloride or other toxic materials. With either method, pretest a small area before proceeding. Always rinse promptly with clean water.