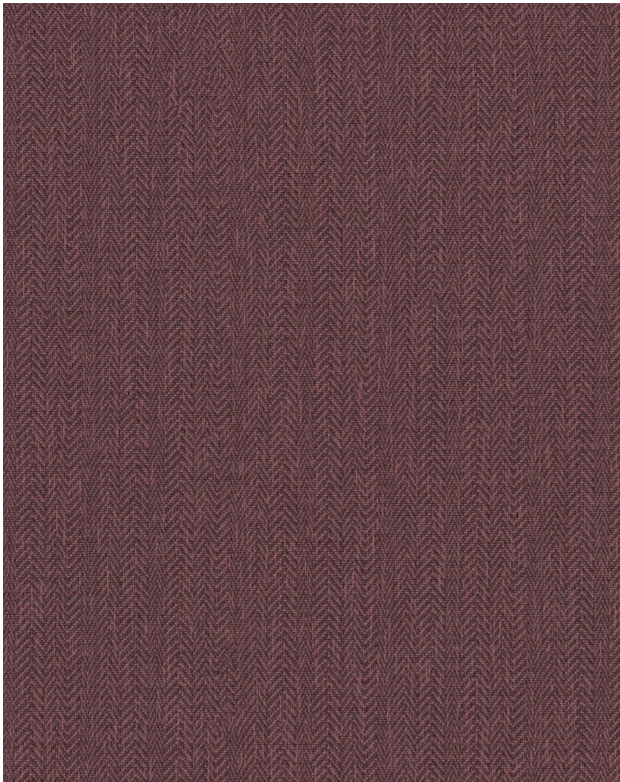


CHEV

CV-008, Raisin  
Keystone Collection

TECHNICAL INFORMATION

CATEGORY: Upholstery  
CONTENT: 81% Bio-Attributed Vinyl - Phthalate Free face, 19% Recycled Polyester backing  
BACKING: Recycled Polyester  
FINISH: Soil & Stain Resistant Top Coat  
WIDTH: 54"  
WEIGHT: 31 oz./ln yd  
SHOWN RAILROADED: No  
DIRECTIONAL: Yes  
APPROX. ROLL SIZE: 30 yards  
APPLICATION: Indoor / Atrium



PERFORMANCE



ABRASION RESISTANCE: Exceeds 100,000 Double Rubs\*  
(Wyzenbeek/Cotton Duck)  
BREAKING STRENGTH: Warp 121.0 / Fill 72.0  
COLORFASTNESS TO CROCKING: Dry: Class 4/Wet: Class 4  
COLORFASTNESS TO LIGHT: 1000 hours  
SEAM STRENGTH: Warp 46.0 / Fill 35.0  
COLD CRACK: -10 °F  
DENIM DYE RESISTANT  
LIQUID BARRIER  
  
\* Multiple factors affect fabric durability and appearance retention, including end-user application and proper maintenance.  
Wyzenbeek results above 100,000 double rubs have not been shown to be an indicator of increased lifespan.

REDUCED ENVIRONMENTAL IMPACT

GREENGUARD GOLD CERTIFIED  
PHTHALATE FREE  
PFAS FREE  
NO FR ADDITIVES  
NO ANTIMICROBIAL ADDITIVES  
NO ANTIBACTERIAL ADDITIVES  
MINDFUL MATERIALS COMPLIANT  
BPA FREE  
FORMALDEHYDE FREE  
VEGAN COMPLIANT  
TRIS FREE  
HPD AVAILABLE  
PROP 65 COMPLIANT  
REACH COMPLIANT  
ROHS COMPLIANT  
DOES NOT CONTAIN CONFLICT MINERALS  
CFFA HEALTHCARE 201 COMPLIANT

FLAMMABILITY

PASSES CAL TB 117-2013  
NFPA 260/UFAC CLASS 1  
AB 2998 COMPLIANT

## WARRANTY

STANDARD UPHOLSTERY | '5' FIVE YEAR WARRANTY  
See [Warranty Terms](#) for more information.

## DYE TRANSFER DISCLAIMER

Certain clothing and accessory dyes (such as those used on denim jeans) may migrate to lighter colors. This phenomenon is increased by humidity and temperature and is irreversible. Mayer Fabrics will not assume responsibility for dye transfer caused by external contaminants. Please check compatibility when using this product in combination with painted or varnished surfaces.

## ADDITIONAL INFORMATION

Custom Colors: All patterns can be custom colored. Minimum yardage applies.

Digital Swatch Color Matching: Due to color variations on different monitors and color printers, actual swatch colors may vary slightly. Please request a memo sample from Mayer Fabrics to ensure proper color representation.

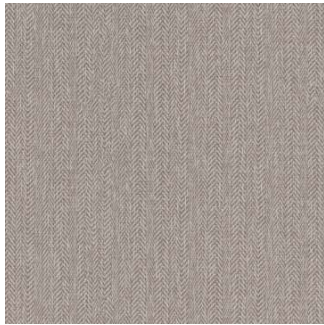
## CLEANING & MAINTENANCE

WS: Water/Solvent Cleaner - Spot clean with a mild solvent, an upholstery shampoo, or the foam from a mild detergent. When using a solvent or dry cleaning product, follow instructions carefully and clean only in a well-ventilated room. Avoid any product that contains carbon tetrachloride or other toxic materials. With either method, pretest a small area before proceeding. Always rinse promptly with clean water.

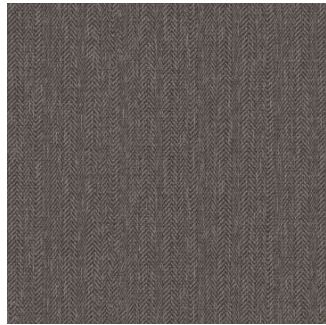
BC: Bleach Cleanable - 1 parts bleach, 9 parts water = 10% bleach, 90% water solution. Do not clean / disinfect fabric for longer than 10 minutes using the 10% bleach solution. Always rinse promptly with clean water after applying the bleach solution. Failure to do so will void any and all warranties.



**CHEV COLORS (16)**



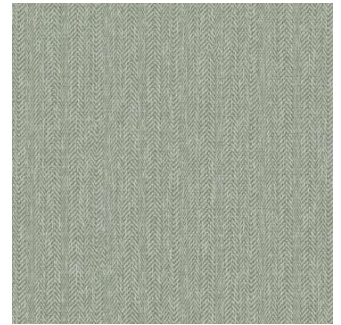
**Malt**  
CV-000



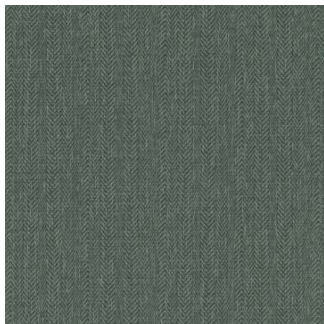
**Bison**  
CV-010



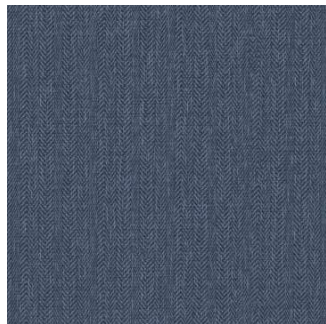
**Wheat**  
CV-002



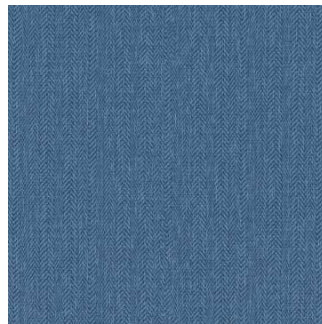
**Willow**  
CV-003



**Pesto**  
CV-013



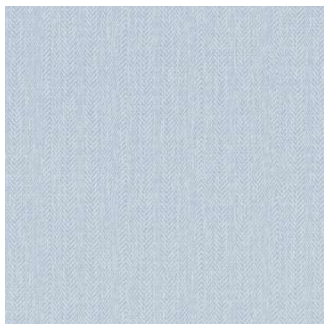
**Imperial**  
CV-004



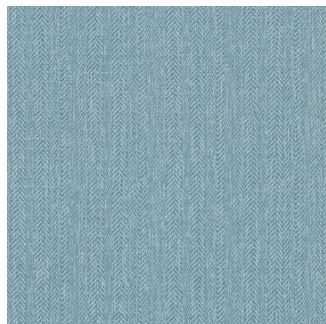
**Hydro**  
CV-014



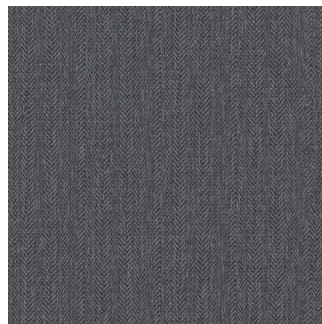
**Jeans**  
CV-024



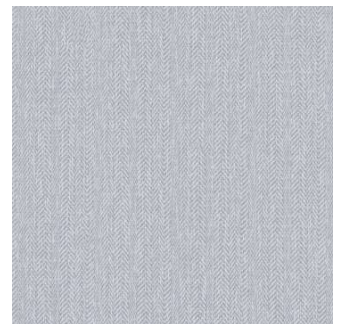
**Airy**  
CV-034



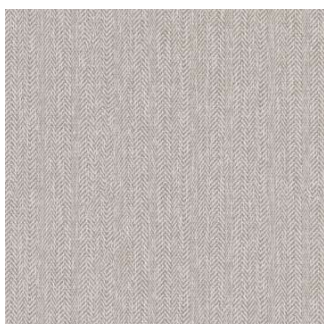
**Ocean**  
CV-044



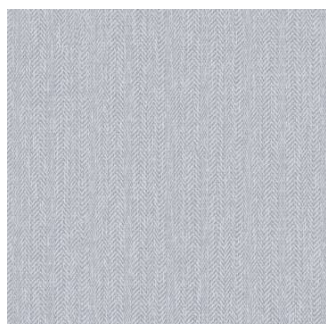
**Pepper**  
CV-006



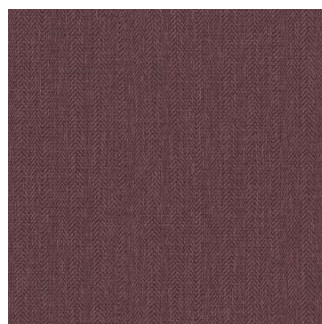
**Cement**  
CV-016



**Linen**  
CV-007



**Marble**  
CV-017



**Raisin**  
CV-008



**Harvest**  
CV-009