

## CHEQUERS

CQ-000, Cafe

--General Coated Upholstery--

### TECHNICAL INFORMATION

CATEGORY: Upholstery

CONTENT: 60% Polyurethane Polycarbonate - PVC Free face, 40% Polyester backing

BACKING: Polyester

FINISH: Soil & Stain Resistant Top Coat with Ink Resistant Technology

WIDTH: 54"

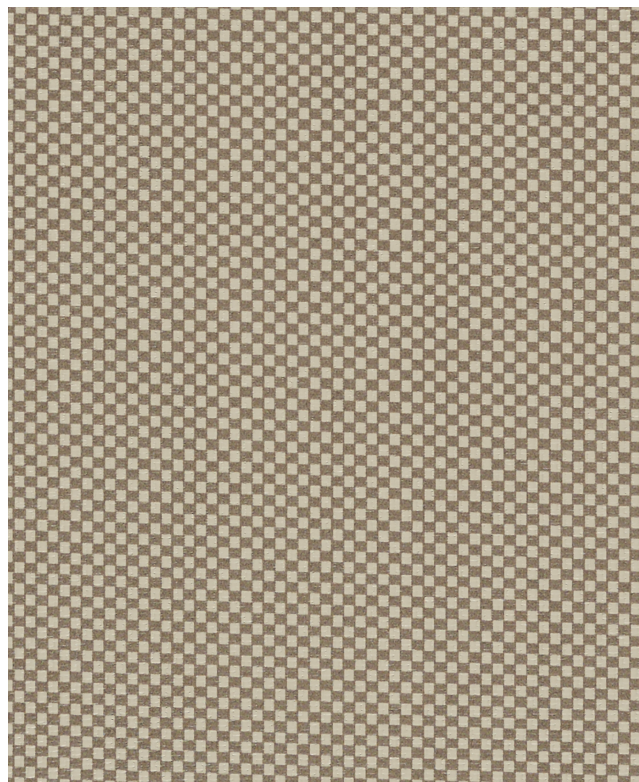
WEIGHT: 24.5 oz./ln yd

VISUAL REPEAT: 0.25 in/0.64 cm H, 0.2 in/0.51 cm V

SHOWN RAILROADED: No

DIRECTIONAL: Yes

APPROX. ROLL SIZE: 30 yards



### PERFORMANCE



ABRASION RESISTANCE: Exceeds 100,000 Double Rubs\* (Wyzenbeek/Cotton Duck)

BREAKING STRENGTH: Warp 120.0 / Fill 120.0

COLORFASTNESS TO CROCKING: Dry: Class 4/Wet: Class 4

COLORFASTNESS TO LIGHT: 200 hours

PILLING RESISTANCE: Class n/a

SEAM STRENGTH: Warp 100.0 / Fill 100.0

HYDROLYSIS: 10 weeks

INK RESISTANT

LIQUID BARRIER

\* Multiple factors affect fabric durability and appearance retention, including end-user application and proper maintenance. Wyzenbeek results above 100,000 double rubs have not been shown to be an indicator of increased lifespan.

### REDUCED ENVIRONMENTAL IMPACT

GREENGUARD GOLD CERTIFIED

PHthalate FREE

PFAS FREE

NO FR ADDITIVES

HHI / GREENHEALTH COMPLIANT

NO ANTIMICROBIAL ADDITIVES

NO ANTIBACTERIAL ADDITIVES

MINDFUL MATERIALS COMPLIANT

VEGAN COMPLIANT

PROP 65 COMPLIANT

REACH COMPLIANT

ROHS COMPLIANT

DOES NOT CONTAIN CONFLICT MINERALS

### FLAMMABILITY

PASSES CAL TB 117-2013

NFPA 260/UFAC CLASS 1

AB 2998 COMPLIANT

## WARRANTY

STANDARD UPHOLSTERY | '5' FIVE YEAR WARRANTY  
See [Warranty Terms](#) for more information.

## DYE TRANSFER DISCLAIMER

Certain clothing and accessory dyes (such as those used on denim jeans) may migrate to lighter colors. This phenomenon is increased by humidity and temperature and is irreversible. Mayer Fabrics will not assume responsibility for dye transfer caused by external contaminants. Please check compatibility when using this product in combination with painted or varnished surfaces.

## ADDITIONAL INFORMATION

Custom Colors: All patterns can be custom colored. Minimum yardage applies.

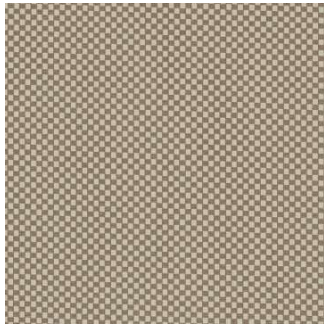
Digital Swatch Color Matching: Due to color variations on different monitors and color printers, actual swatch colors may vary slightly. Please request a memo sample from Mayer Fabrics to ensure proper color representation.

## CLEANING & MAINTENANCE

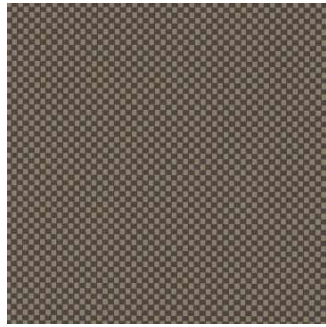
W: Water-Based Cleaner - Spot clean, using the foam only from a water-based cleaning agent, such as a mild detergent or non-solvent upholstery shampoo product. Apply foam with a soft brush in a circular motion. Always rinse promptly with clean water. Vacuum when dry. Pretest small area before proceeding.

BC: Bleach Cleanable - 1 parts bleach, 9 parts water = 10% bleach, 90% water solution. Do not clean / disinfect fabric for longer than 10 minutes using the 10% bleach solution. Always rinse promptly with clean water after applying the bleach solution. Failure to do so will void any and all warranties.

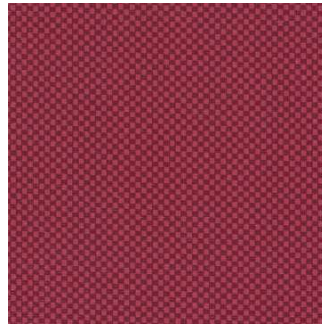
**CHEQUERS COLORS (13)**



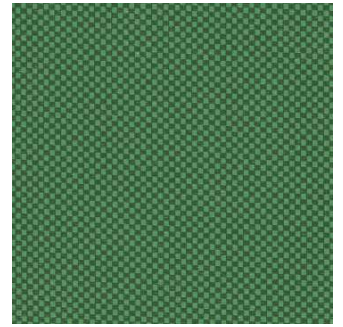
**Cafe**  
CQ-000



**Cocoa**  
CQ-010



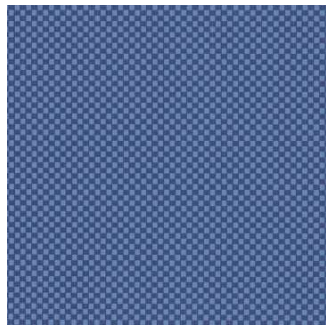
**Cardinal**  
CQ-001



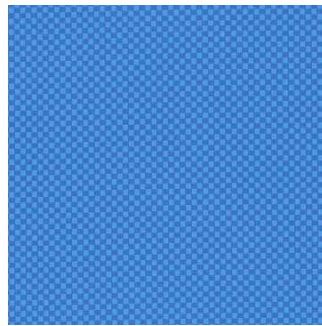
**Shamrock**  
CQ-003



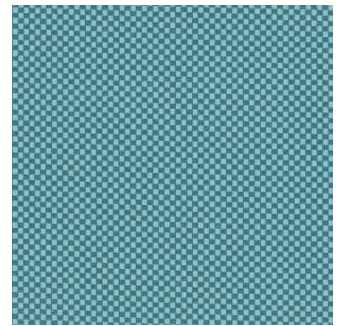
**Pistachio**  
CQ-013



**Navy**  
CQ-004



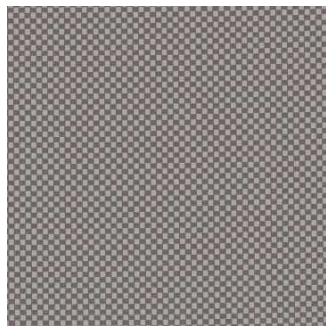
**Cobalt**  
CQ-014



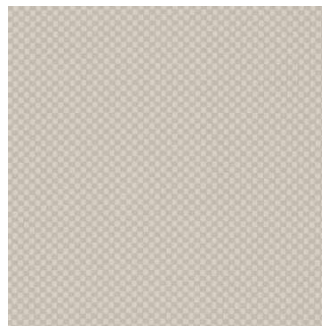
**Ocean**  
CQ-024



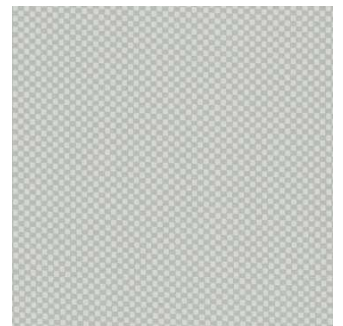
**Mulberry**  
CQ-005



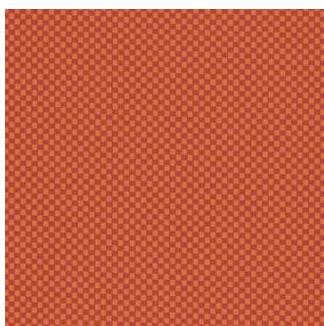
**Metal**  
CQ-006



**Almond**  
CQ-007



**Silver**  
CQ-017



**Orange Peel**  
CQ-009