

## COUNTERPOINT

CP-010, Umber

### TECHNICAL INFORMATION

CATEGORY: Upholstery  
 CONTENT: 81% Polyurethane - PVC Free face, 19% Polyester backing  
 BACKING: 100% Polyester  
 FINISH: SILVERGUARD and PERMAGUARD  
 WIDTH: 54"  
 WEIGHT: 21 oz./ln yd  
 SHOWN RAILROADED: No  
 DIRECTIONAL: Yes  
 APPROX. ROLL SIZE: 30 yards

### PERFORMANCE

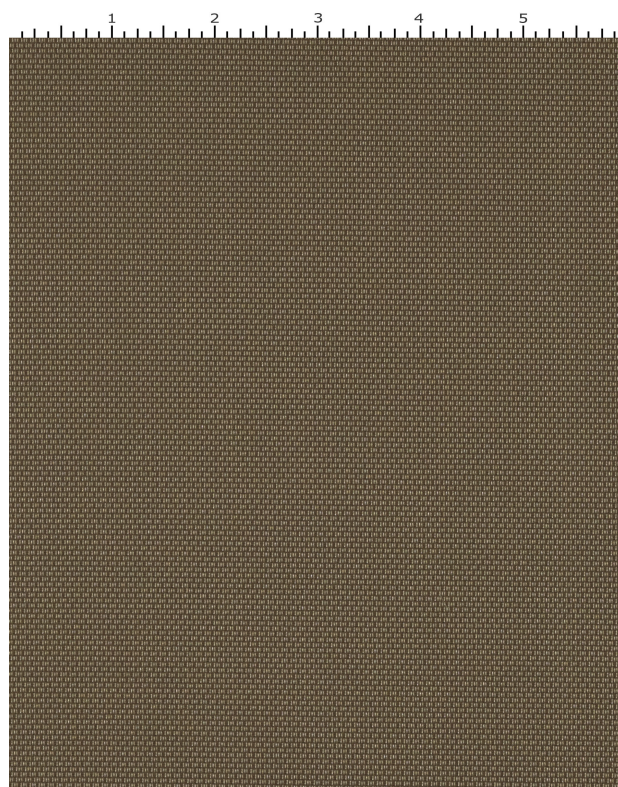


ABRASION RESISTANCE: Exceeds 400,000 Double Rubs\*  
 (Wyzenbeek/Cotton Duck)  
 BREAKING STRENGTH: Warp 90.0 / Fill 80.0  
 COLORFASTNESS TO CROCKING: Dry: Class Exc./Wet: Class Exc.  
 COLORFASTNESS TO LIGHT: 250 hours  
 PILLING RESISTANCE: Class n/a  
 SEAM STRENGTH: Warp 60.0 / Fill 60.0  
 HYDROLYSIS: 7 weeks

\* Multiple factors affect fabric durability and appearance retention, including end-user application and proper maintenance.  
 Wyzenbeek results above 100,000 double rubs have not been shown to be an indicator of increased lifespan.

### FLAMMABILITY

PASSES NFPA 260/UFAC CLASS 1  
 AB 2998 COMPLIANT  
 ASTM E84 CLASS 2 OR B (UNADHERED)  
 ASTM E84 CLASS 3 OR C (UNADHERED)  
 CAL 117 SECTION E  
 FMVSS 302  
 IMO A.652(16) 8.2  
 IMO FTP 2010 CODE MSC.307(88), PART 8, 3.1



### REDUCED ENVIRONMENTAL IMPACT

FORMALDEHYDE FREE  
 DOES NOT CONTAIN CONFLICT MINERALS

## WARRANTY

STANDARD UPHOLSTERY | '5' FIVE YEAR WARRANTY  
See [Warranty Terms](#) for more information.

## DYE TRANSFER DISCLAIMER

Certain clothing and accessory dyes (such as those used on denim jeans) may migrate to lighter colors. This phenomenon is increased by humidity and temperature and is irreversible. Mayer Fabrics will not assume responsibility for dye transfer caused by external contaminants. Please check compatibility when using this product in combination with painted or varnished surfaces.

## ADDITIONAL INFORMATION

Custom Colors: All patterns can be custom colored. Minimum yardage applies.

Digital Swatch Color Matching: Due to color variations on different monitors and color printers, actual swatch colors may vary slightly. Please request a memo sample from Mayer Fabrics to ensure proper color representation.

## CLEANING & MAINTENANCE

WS: Water/Solvent Cleaner - Spot clean with a mild solvent, an upholstery shampoo, or the foam from a mild detergent. When using a solvent or dry cleaning product, follow instructions carefully and clean only in a well-ventilated room. Avoid any product that contains carbon tetrachloride or other toxic materials. With either method, pretest a small area before proceeding. Always rinse promptly with clean water.

BC: Bleach Cleanable - 1 parts bleach, 4 parts water = 20% bleach, 80% water solution. Do not clean / disinfect fabric for longer than 10 minutes using the 20% bleach solution. Always rinse promptly with clean water after applying the bleach solution. Failure to do so will void any and all warranties.