

ALL SEASONS

AS-046, Gray

TECHNICAL INFORMATION

CATEGORY: Upholstery
CONTENT: 88% Vinyl - Phthalate Free face, 12% Polyester backing
BACKING: Polyester
FINISH: Soil & Stain Resistant Top Coat with Ink Resistant Technology
WIDTH: 54"
WEIGHT: 36 oz./ln yd
VISUAL REPEAT: None
SHOWN RAILROADED: No
DIRECTIONAL: No
APPROX. ROLL SIZE: 30 yards
APPLICATION: Indoor / Outdoor / Marine Use / Atrium

PERFORMANCE

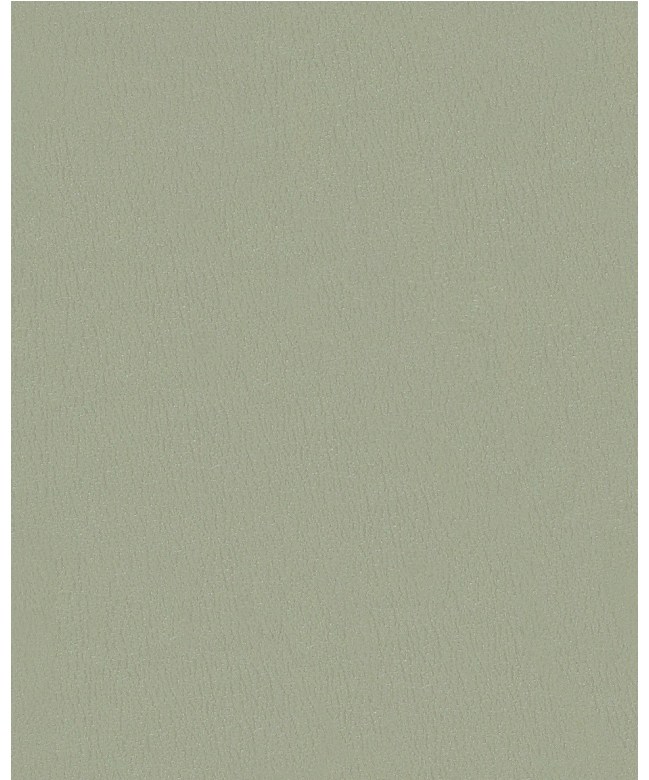


ABRASION RESISTANCE: Exceeds 1,300,000 Double Rubs* (Wyzenbeek/Cotton Duck)
BREAKING STRENGTH: Warp 110.0 / Fill 85.0
COLORFASTNESS TO CROCKING: Dry: Class 4 min/Wet: Class 4 min
COLORFASTNESS TO LIGHT: Grade 5 at 650 hours
SEAM STRENGTH: Warp 60.0 / Fill 30.0
COLD CRACK: -20 °F
INK RESISTANT
LIQUID BARRIER
DENIM DYE RESISTANT
MILDEW RESISTANT

* Multiple factors affect fabric durability and appearance retention, including end-user application and proper maintenance. Wyzenbeek results above 100,000 double rubs have not been shown to be an indicator of increased lifespan.

FLAMMABILITY

PASSES CAL TB 117-2013
NFPA 260/UFAC CLASS 1
AB 2998 COMPLIANT
BIFMA
FMVSS 302
IMO FTP 2010 CODE MSC.307(88), PART 8, 3.1 & 3.2



REDUCED ENVIRONMENTAL IMPACT

GREENGUARD GOLD CERTIFIED
PHTHALATE FREE
PFAS FREE
NO FR ADDITIVES
ANTIMONY FREE
BPA FREE
LEAD/HEAVY METAL FREE
FORMALDEHYDE FREE
TRIS FREE
PROP 65 COMPLIANT
VEGAN COMPLIANT
REACH COMPLIANT
HPD AVAILABLE
ROHS COMPLIANT
DOES NOT CONTAIN CONFLICT MINERALS
CFFA HEALTHCARE 201 COMPLIANT

WARRANTY

STANDARD UPHOLSTERY | '5' FIVE YEAR WARRANTY
See [Warranty Terms](#) for more information.

DYE TRANSFER DISCLAIMER

Certain clothing and accessory dyes (such as those used on denim jeans) may migrate to lighter colors. This phenomenon is increased by humidity and temperature and is irreversible. Mayer Fabrics will not assume responsibility for dye transfer caused by external contaminants. Please check compatibility when using this product in combination with painted or varnished surfaces.

ADDITIONAL INFORMATION

Custom Colors: All patterns can be custom colored. Minimum yardage applies.

Digital Swatch Color Matching: Due to color variations on different monitors and color printers, actual swatch colors may vary slightly. Please request a memo sample from Mayer Fabrics to ensure proper color representation.

CLEANING & MAINTENANCE

WS: Water/Solvent Cleaner - Spot clean with a mild solvent, an upholstery shampoo, or the foam from a mild detergent. When using a solvent or dry cleaning product, follow instructions carefully and clean only in a well-ventilated room. Avoid any product that contains carbon tetrachloride or other toxic materials. With either method, pretest a small area before proceeding. Always rinse promptly with clean water.

CFC: Coated Fabrics Cleaning - When a spill/stain occurs wipe immediately with a clean dry cloth. Carefully remove the majority of the stain then follow the steps below.

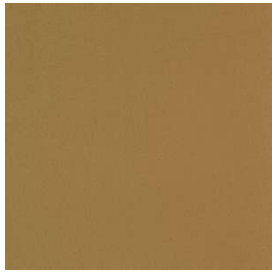
Soap & Water - Remove ordinary dirt and smudges with a mild soap and water solution using a soft cloth or towel. Rinse with fresh water and wipe dry.

Non-abrasive Cleaners - If residue remains, use a straight application of the following cleaners: Fantastik or 409 and gently clean with a soft cloth. Rinse with fresh water and wipe dry.

Isopropyl Alcohol - More stubborn stains may be eliminated using a cotton cloth soaked in 70-91% isopropyl (rubbing) alcohol. Wipe without spreading stain to surrounding area. A second application should be applied with vigorous rubbing in a circular motion. For highly textured material, a soft brush is recommended to clean valleys and crevices. Rinse with fresh water and wipe dry.

BC: Bleach Cleanable - 1 parts bleach, 9 parts water = 10% bleach, 90% water solution. Do not clean / disinfect fabric for longer than 10 minutes using the 10% bleach solution. Always rinse promptly with clean water after applying the bleach solution. Failure to do so will void any and all warranties.

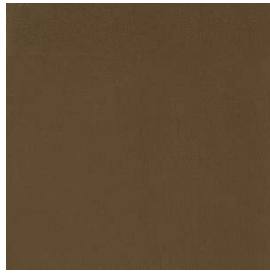
ALL SEASONS COLORS (73)



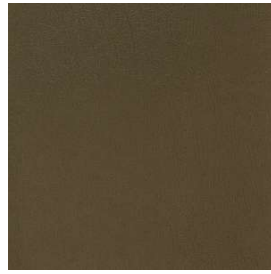
Outback
AS-000



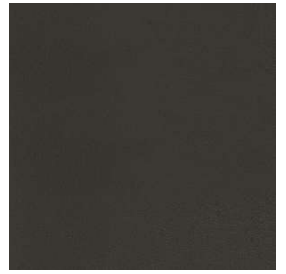
Allspice
AS-010



Chocolate
AS-020



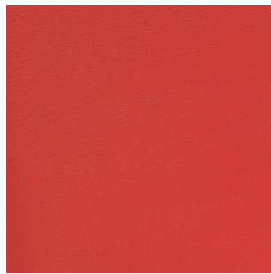
Fudge
AS-030



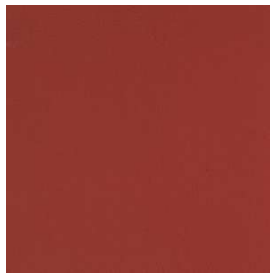
Otter
AS-040



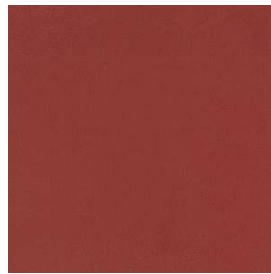
Tomato
AS-001



American Beauty
AS-011



Candy Apple
AS-021



Berry
AS-031



Burgundy
AS-041



Port
AS-051



New Burgundy
AS-061



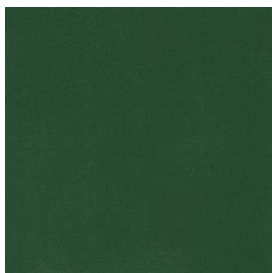
Cordovan
AS-071



Marigold
AS-002



Spruce
AS-003



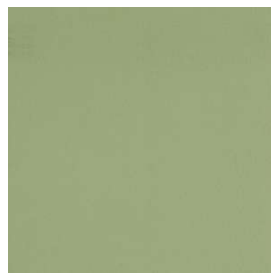
Emerald
AS-103



Tea Leaf
AS-013



Hunter Green
AS-113



Seafoam
AS-023



Green Tea
AS-123



Leapfrog
AS-033



Grass
AS-133



Jade
AS-043



Vizcaya Palm
AS-053

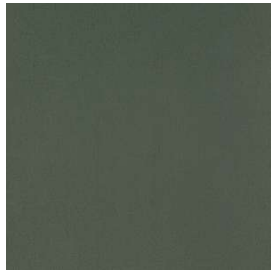


Everglade
AS-063

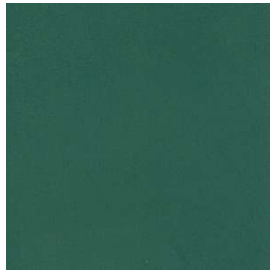
ALL SEASONS COLORS (73)



Sea Grass
AS-073



Harbour
AS-083



Raintree
AS-093



Aqua
AS-004



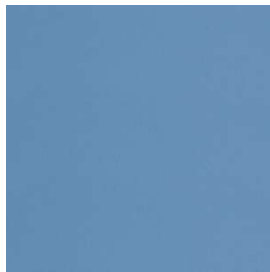
Blueberry
AS-104



Light Teal
AS-014



Cerulean
AS-114



Neptune
AS-024



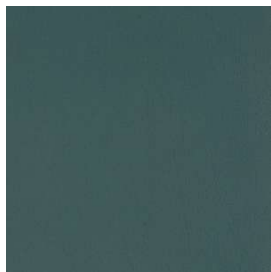
Royal Blue
AS-124



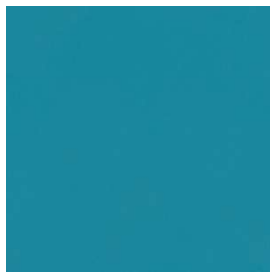
Horizon Blue
AS-034



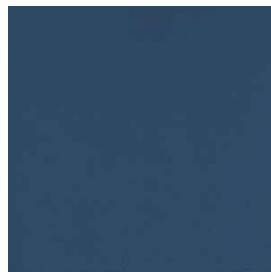
Midnight Blue
AS-134



Colonial Blue
AS-044



Blue Nile
AS-054



Marina
AS-064



Navy
AS-074



Bluejay
AS-084



Regal Blue
AS-094



Coal
AS-005



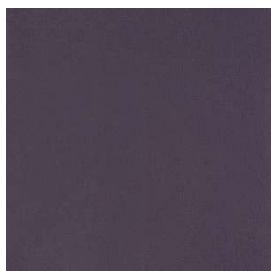
Wood Violet
AS-015



Grape
AS-025



Purple Iris
AS-035



New Purple
AS-045



Black Plum
AS-055



Black
AS-006



Dream
AS-016

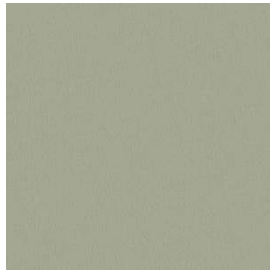
ALL SEASONS COLORS (73)



Lite Gray
AS-026



Gris
AS-036



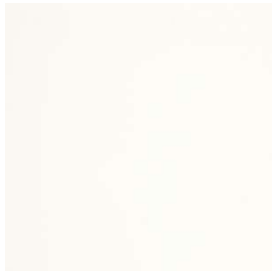
Gray
AS-046



Cadet
AS-056



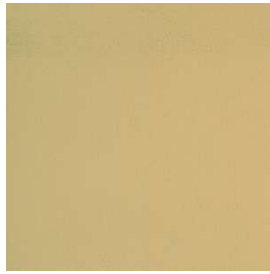
Slate
AS-066



Snow White
AS-007



Bucksuede
AS-107



Coffee Cream
AS-017



Bone White
AS-027



Wheat
AS-037



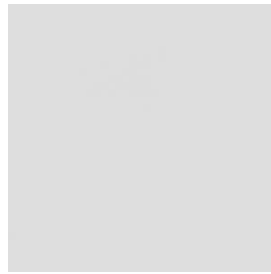
Beige
AS-047



Natural
AS-057



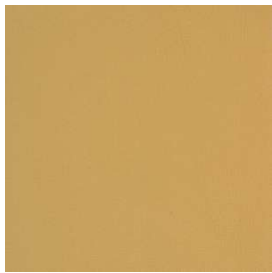
Pumice
AS-067



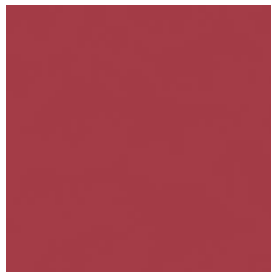
Reflection
AS-077



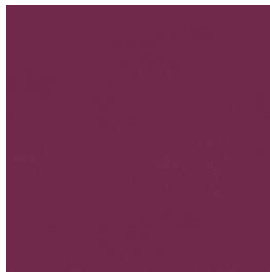
Saddle Tan
AS-087



Camelback
AS-097



Very Berry
AS-008



Magenta
AS-018



Nasturtium
AS-009



Persimmon
AS-019



Deep Clay
AS-029



Red Cent
AS-039



Manzanita
AS-049