

## LANDSCAPE

632-013, Hosta

[Majorelle Collection](#)

### TECHNICAL INFORMATION

CATEGORY: Upholstery

CONTENT: 40% Polyester/32% Acrylic/22% Viscose/6% Linen

BACKING: Acrylic

FINISH: Stain Repellent - PFOA & PFOS Free

WIDTH: 54"

WEIGHT: 27.69 oz./ln yd

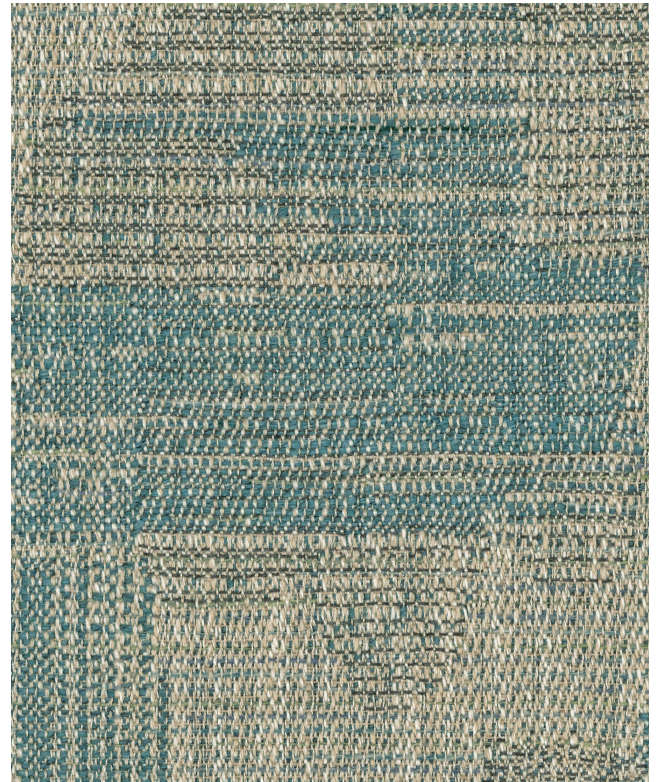
VISUAL REPEAT: 13.78 in/35.00 cm H, 13.78 in/35.00 cm V

SHOWN RAILROADED: No

DIRECTIONAL: Yes

APPROX. ROLL SIZE: 40 yards

APPLICATION: Indoor



### PERFORMANCE



ABRASION RESISTANCE: Passes 90,000 Double Rubs  
(Wyzenbeek/Cotton Duck)

BREAKING STRENGTH: Warp 75.0 / Fill 90.0

COLORFASTNESS TO CROCKING: Dry: Class 4 min/Wet: Class 4 min

COLORFASTNESS TO LIGHT: 40 hours

PILLING RESISTANCE: Class 4.5

SEAM SLIPPAGE: Warp 60.0 / Fill 80.0

### FLAMMABILITY

PASSES CAL TB 117-2013

NFPA 260/UFAC CLASS 1

AB 2998 COMPLIANT

### REDUCED ENVIRONMENTAL IMPACT

GREENGUARD GOLD CERTIFIED

NO FR ADDITIVES

NO ANTIMICROBIAL ADDITIVES

NO ANTIBACTERIAL ADDITIVES

HHI / GREENHEALTH COMPLIANT

MINDFUL MATERIALS COMPLIANT

BPA FREE

FORMALDEHYDE FREE

PROP 65 COMPLIANT

REACH COMPLIANT

OEKO-TEX STANDARD 100

DOES NOT CONTAIN CONFLICT MINERALS

## WARRANTY

STANDARD UPHOLSTERY | '5' FIVE YEAR WARRANTY  
See [Warranty Terms](#) for more information.

## DYE TRANSFER DISCLAIMER

Certain clothing and accessory dyes (such as those used on denim jeans) may migrate to lighter colors. This phenomenon is increased by humidity and temperature and is irreversible. Mayer Fabrics will not assume responsibility for dye transfer caused by external contaminants. Please check compatibility when using this product in combination with painted or varnished surfaces.

## ADDITIONAL INFORMATION

Custom Colors: All patterns can be custom colored. Minimum yardage applies.

Digital Swatch Color Matching: Due to color variations on different monitors and color printers, actual swatch colors may vary slightly. Please request a memo sample from Mayer Fabrics to ensure proper color representation.

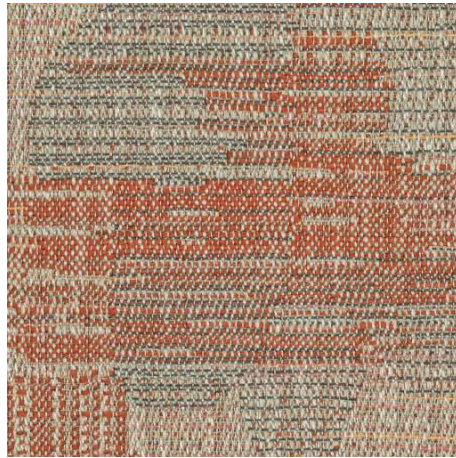
## CLEANING & MAINTENANCE

W: Water-Based Cleaner - Spot clean, using the foam only from a water-based cleaning agent, such as a mild detergent or non-solvent upholstery shampoo product. Apply foam with a soft brush in a circular motion. Always rinse promptly with clean water. Vacuum when dry. Pretest small area before proceeding.

LANDSCAPE COLORS (8)



**Cement**  
632-000



**Cosmos**  
632-001



**Marigold**  
632-002



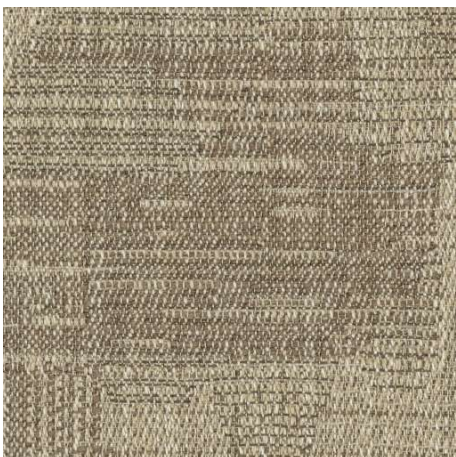
**Grass**  
632-003



**Hosta**  
632-013



**Salvia**  
632-004



**Desert**  
632-007



**Clay**  
632-009