

FEDORA

621-033, Opal

TECHNICAL INFORMATION

CATEGORY: Upholstery, Panel, Drapery & Privacy Curtains

CONTENT: 100% Polyester

BACKING: Polyester

FINISH: Stain Repellent - PFAS Free

WIDTH: 54"

WEIGHT: 17.2 oz./ln yd

VISUAL REPEAT: None

SHOWN RAILROADED: No

DIRECTIONAL: Yes

APPROX. ROLL SIZE: 50 yards



PERFORMANCE



ABRASION RESISTANCE: Passes 100,000 Double Rubs*
(Wyzenbeek/Cotton Duck)

BREAKING STRENGTH: Warp 290.0 / Fill 239.0

COLORFASTNESS TO CROCKING: Dry: Class 4 min/Wet: Class 4 min

COLORFASTNESS TO LIGHT: Grade 4 at 40 hours

PILLING RESISTANCE: Class 5

SEAM SLIPPAGE: Warp 106.1 / Fill 109.2

* Multiple factors affect fabric durability and appearance retention, including end-user application and proper maintenance. Wyzenbeek results above 100,000 double rubs have not been shown to be an indicator of increased lifespan.

FLAMMABILITY

PASSES CAL TB 117-2013

NFPA 260/UFAC CLASS 1

AB 2998 COMPLIANT

ASTM E84 CLASS 1 OR A (UNADHERED)

CAN BE TREATED TO PASS NFPA 701

REDUCED ENVIRONMENTAL IMPACT

GREENGUARD GOLD CERTIFIED

PFAS FREE

NO FR ADDITIVES

NO ANTIMICROBIAL ADDITIVES

NO ANTIBACTERIAL ADDITIVES

BPA FREE

FORMALDEHYDE FREE

PROP 65 COMPLIANT

REACH COMPLIANT

RED LIST FREE

DOES NOT CONTAIN CONFLICT MINERALS

WARRANTY

STANDARD UPHOLSTERY | '5' FIVE YEAR WARRANTY
See [Warranty Terms](#) for more information.

DYE TRANSFER DISCLAIMER

Certain clothing and accessory dyes (such as those used on denim jeans) may migrate to lighter colors. This phenomenon is increased by humidity and temperature and is irreversible. Mayer Fabrics will not assume responsibility for dye transfer caused by external contaminants. Please check compatibility when using this product in combination with painted or varnished surfaces.

ADDITIONAL INFORMATION

Custom Colors: All patterns can be custom colored. Minimum yardage applies.

Digital Swatch Color Matching: Due to color variations on different monitors and color printers, actual swatch colors may vary slightly. Please request a memo sample from Mayer Fabrics to ensure proper color representation.

CLEANING & MAINTENANCE

W: Water-Based Cleaner - Spot clean, using the foam only from a water-based cleaning agent, such as a mild detergent or non-solvent upholstery shampoo product. Apply foam with a soft brush in a circular motion. Always rinse promptly with clean water. Vacuum when dry. Pretest small area before proceeding.



This 100% polyester fabric is included in the Underwriter's Laboratory Fabric Recognition Program. Additional testing of this U.L. recognized component is not required on approved panels from participating manufacturers.

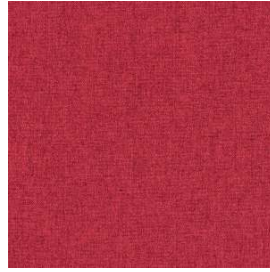
FEDORA COLORS (25)



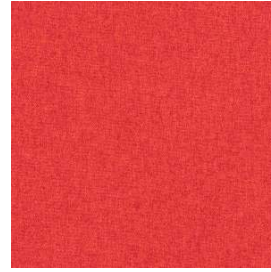
Mink
621-000



Espresso
621-010



Ruby
621-001



Tomato
621-011



Topaz
621-002



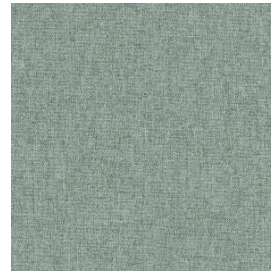
Cactus
621-003



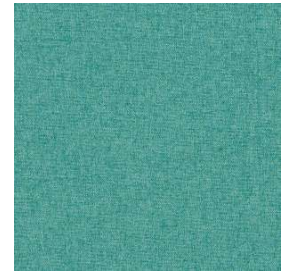
Citron
621-013



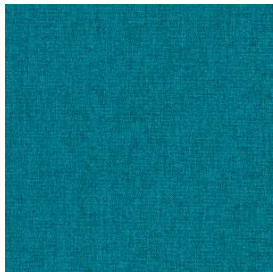
Eucalyptus
621-023



Opal
621-033



Aquamarine
621-043



Aegean
621-053



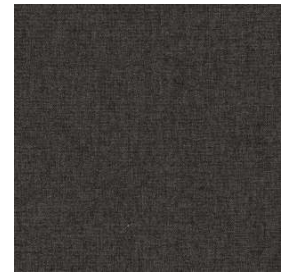
Midnight
621-004



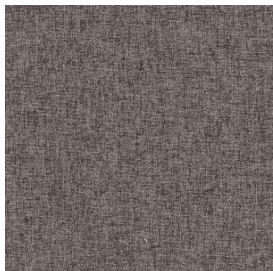
Indigo
621-014



Purple
621-005



Bitumen
621-006



Charcoal
621-016



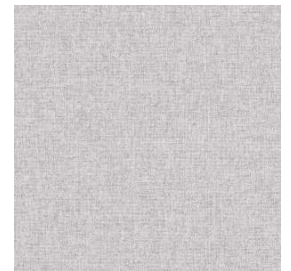
Pewter
621-026



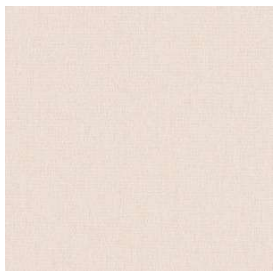
Dapper
621-036



Light Grey
621-046



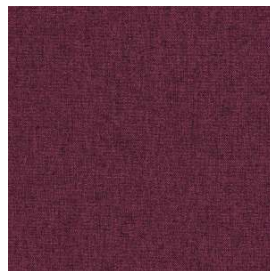
Dew
621-056



Winter
621-007



Fawn
621-017



Plum
621-008



Persimmon
621-009



Tangelo
621-019