

## FEDORA

621-023, Eucalyptus

### TECHNICAL INFORMATION

CATEGORY: Upholstery, Panel, Drapery & Privacy Curtains

CONTENT: 100% Polyester

BACKING: Polyester

FINISH: Stain Repellent - PFAS Free

WIDTH: 54"

WEIGHT: 17.2 oz./ln yd

VISUAL REPEAT: None

SHOWN RAILROADED: No

DIRECTIONAL: Yes

APPROX. ROLL SIZE: 50 yards

### PERFORMANCE



ABRASION RESISTANCE: Passes 100,000 Double Rubs\*  
(Wyzenbeek/Cotton Duck)

BREAKING STRENGTH: Warp 290.0 / Fill 239.0

COLORFASTNESS TO CROCKING: Dry: Class 4 min/Wet: Class 4 min

COLORFASTNESS TO LIGHT: 40 hours

PILLING RESISTANCE: Class 5

SEAM SLIPPAGE: Warp 106.1 / Fill 109.2

\* Multiple factors affect fabric durability and appearance retention, including end-user application and proper maintenance.  
Wyzenbeek results above 100,000 double rubs have not been shown to be an indicator of increased lifespan.

### FLAMMABILITY

PASSES CAL TB 117-2013

NFPA 260/UFAC CLASS 1

AB 2998 COMPLIANT

ASTM E84 CLASS 1 OR A (UNADHERED)

MAY COMPLY WITH CAL. TECH. BUL. 133 WHEN COMBINED WITH APPROPRIATE COMPONENTS.

CAN BE TREATED TO PASS NFPA 701



### REDUCED ENVIRONMENTAL IMPACT

GREENGUARD GOLD CERTIFIED

PFAS FREE

NO FR ADDITIVES

NO ANTIMICROBIAL ADDITIVES

NO ANTIBACTERIAL ADDITIVES

MINDFUL MATERIALS COMPLIANT

BPA FREE

FORMALDEHYDE FREE

PROP 65 COMPLIANT

REACH COMPLIANT

DOES NOT CONTAIN CONFLICT MINERALS

## WARRANTY

STANDARD UPHOLSTERY | '5' FIVE YEAR WARRANTY  
See [Warranty Terms](#) for more information.

## DYE TRANSFER DISCLAIMER

Certain clothing and accessory dyes (such as those used on denim jeans) may migrate to lighter colors. This phenomenon is increased by humidity and temperature and is irreversible. Mayer Fabrics will not assume responsibility for dye transfer caused by external contaminants. Please check compatibility when using this product in combination with painted or varnished surfaces.

## ADDITIONAL INFORMATION

Custom Colors: All patterns can be custom colored. Minimum yardage applies.

Digital Swatch Color Matching: Due to color variations on different monitors and color printers, actual swatch colors may vary slightly. Please request a memo sample from Mayer Fabrics to ensure proper color representation.

## CLEANING & MAINTENANCE

W: Water-Based Cleaner - Spot clean, using the foam only from a water-based cleaning agent, such as a mild detergent or non-solvent upholstery shampoo product. Apply foam with a soft brush in a circular motion. Always rinse promptly with clean water. Vacuum when dry. Pretest small area before proceeding.



® This 100% polyester fabric is included in the Underwriter's Laboratory Fabric Recognition Program. Additional testing of this U.L. recognized component is not required on approved panels from participating manufacturers.



## FEDORA COLORS (25)



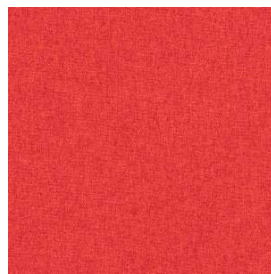
**Mink**  
621-000



**Espresso**  
621-010



**Ruby**  
621-001



**Tomato**  
621-011



**Topaz**  
621-002



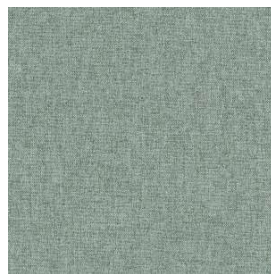
**Cactus**  
621-003



**Citron**  
621-013



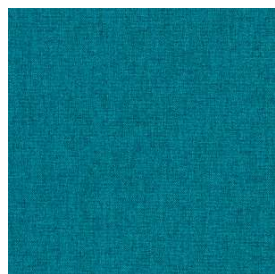
**Eucalyptus**  
621-023



**Opal**  
621-033



**Aquamarine**  
621-043



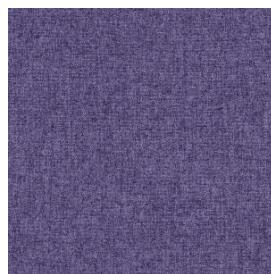
**Aegean**  
621-053



**Midnight**  
621-004



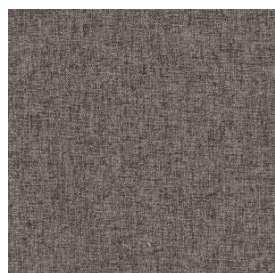
**Indigo**  
621-014



**Purple**  
621-005



**Bitumen**  
621-006



**Charcoal**  
621-016



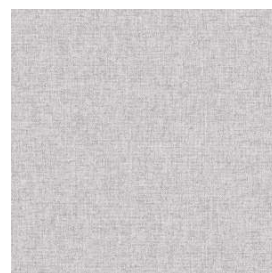
**Pewter**  
621-026



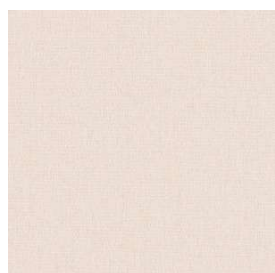
**Dapper**  
621-036



**Light Grey**  
621-046



**Dew**  
621-056



**Winter**  
621-007



**Fawn**  
621-017



**Plum**  
621-008



**Persimmon**  
621-009



**Tangelo**  
621-019