

HAVANA

459-007, Oatmeal

Tourist Collection

TECHNICAL INFORMATION

CATEGORY: Upholstery

CONTENT: 70% Polypropylene/30% Polyester

BACKING: Latex

FINISH: Inherently Cleanable

WIDTH: 54"

WEIGHT: 16.04 oz./ln yd

VISUAL REPEAT: None

SHOWN RAILROADED: No

DIRECTIONAL: Yes

APPROX. ROLL SIZE: 50 yards

APPLICATION: Indoor



PERFORMANCE



ABRASION RESISTANCE: Exceeds 100,000 Double Rubs*
(Wyzenbeek/Cotton Duck)

BREAKING STRENGTH: Warp 214.0 / Fill 450.0

COLORFASTNESS TO CROCKING: Dry: Class 4/Wet: Class 4

COLORFASTNESS TO LIGHT: Grade 5 at 40 hours

PILLING RESISTANCE: Class 4

SEAM SLIPPAGE: Warp 50.0 / Fill 80.0

* Multiple factors affect fabric durability and appearance retention, including end-user application and proper maintenance. Wyzenbeek results above 100,000 double rubs have not been shown to be an indicator of increased lifespan.

REDUCED ENVIRONMENTAL IMPACT

GREENGUARD GOLD CERTIFIED

PFAS FREE

NO FR ADDITIVES

NO ANTIMICROBIAL ADDITIVES

NO ANTIBACTERIAL ADDITIVES

OEKO-TEX STANDARD 100

PROP 65 COMPLIANT

DOES NOT CONTAIN CONFLICT MINERALS

FLAMMABILITY

PASSES CAL TB 117-2013

NFPA 260/UFAC CLASS 1

AB 2998 COMPLIANT

WARRANTY

STANDARD UPHOLSTERY | '5' FIVE YEAR WARRANTY
See [Warranty Terms](#) for more information.

DYE TRANSFER DISCLAIMER

Certain clothing and accessory dyes (such as those used on denim jeans) may migrate to lighter colors. This phenomenon is increased by humidity and temperature and is irreversible. Mayer Fabrics will not assume responsibility for dye transfer caused by external contaminants. Please check compatibility when using this product in combination with painted or varnished surfaces.

ADDITIONAL INFORMATION

Custom Colors: All patterns can be custom colored. Minimum yardage applies.

Digital Swatch Color Matching: Due to color variations on different monitors and color printers, actual swatch colors may vary slightly. Please request a memo sample from Mayer Fabrics to ensure proper color representation.

CLEANING & MAINTENANCE

W: Water-Based Cleaner - Spot clean, using the foam only from a water-based cleaning agent, such as a mild detergent or non-solvent upholstery shampoo product. Apply foam with a soft brush in a circular motion. Always rinse promptly with clean water. Vacuum when dry. Pretest small area before proceeding.

IC: Inherently Cleanable - Always treat stain promptly. At first, remove any excess dirt or liquid with a paper towel. If the stain has already dried, gently brush off any excess material, then dab gently with a damp cloth or sponge until it disappears using the method described below. For less severe stains (coke, coffee, milk, red wine, tea, etc.) Add a mild detergent to lukewarm water. Take a clean cloth, wet the stain until damp with the cleaning solution and gently rub the stained area. Do not overrub. Repeat until the stain appears to be removed. Afterwards, rinse the fabric with a damp cloth to remove the cleaning solution. Air dry. For more stubborn stains (ketchup, chocolate sauce, chips, oil, fruit, mud, blood, etc.) Use a stain removing product containing hydrogen peroxide*. Spray the stain and allow the product time to soak in for a couple of minutes, then gently rub the stained area with a clean cloth. Repeat if necessary. Afterwards, rinse the fabric thoroughly with a damp cloth to remove the cleaning solution. Air dry. For the toughest stains (pencil, lipstick, pen, ink, permanent marker, etc.) Use a simple cleaning solution of 1 ounce of water based detergent, 1 ounce of bleach and 1/2 gallon of water. Never use straight bleach. Take a clean cloth and wet until damp with the cleaning solution and gently rub the stained area. Repeat until stain is gone. Afterwards, rinse the fabric very thoroughly with a damp cloth. Caution: Make sure to always use the least aggressive cleaning agent first. Repeat with a stronger product in case the stain hasn't disappeared after the first attempt. If possible, put a clean cloth on the back of the stained area to absorb excess moisture.

*Hydrogen peroxide or bleach wont harm the fabric, but it could damage your clothing if not rinsed and dried correctly.

BC: Bleach Cleanable - 1 parts bleach, 9 parts water = 10% bleach, 90% water solution. Do not clean / disinfect fabric for longer than 10 minutes using the 10% bleach solution. Always rinse promptly with clean water after applying the bleach solution. Failure to do so will void any and all warranties.

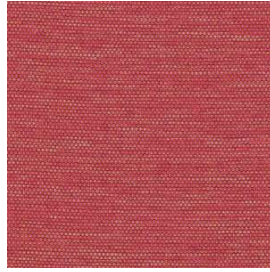
HAVANA COLORS (19)



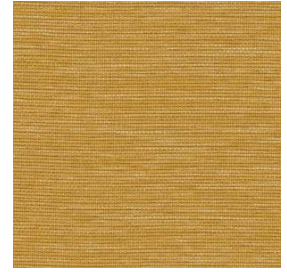
Chocolate
459-000



Cranberry
459-001



Rosewood
459-011



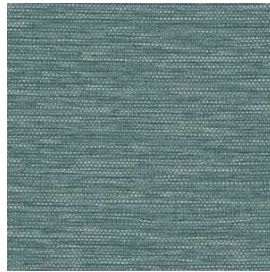
Saffron
459-002



Meadow
459-003



Spring
459-013



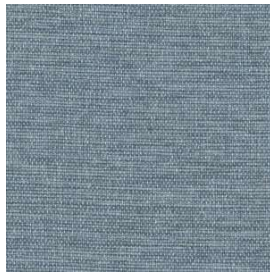
Sea
459-023



Indigo
459-004



Peacock
459-014



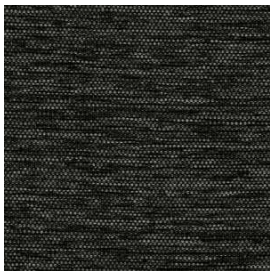
Sky
459-024



Ink
459-034



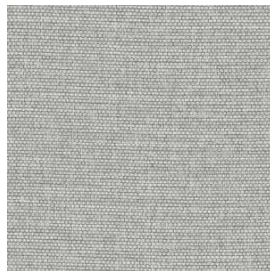
Onyx
459-006



Storm
459-016



Metal
459-026



Silver
459-036



Oatmeal
459-007



Mocha
459-017



Plum
459-008



Mandarin
459-009