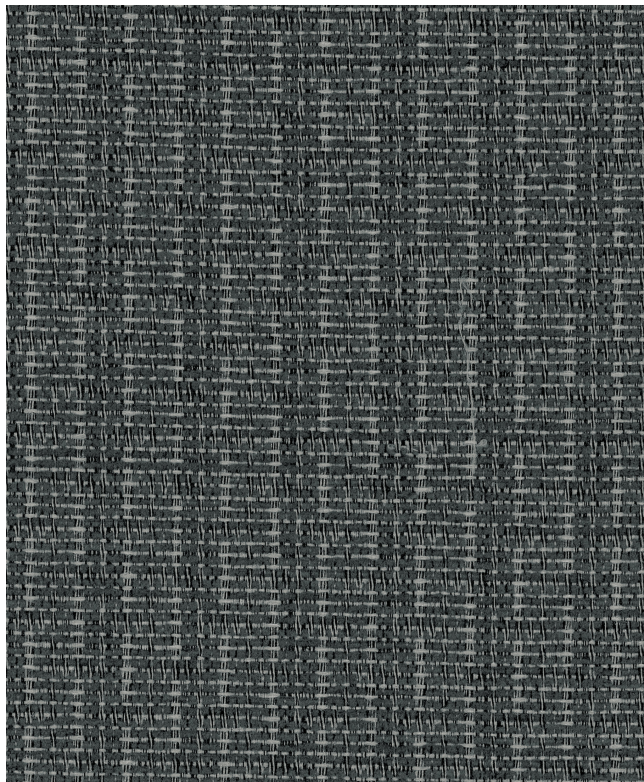


**SYDNEY**

456-006, Iron  
 Tourist Collection

**TECHNICAL INFORMATION**

CATEGORY: Upholstery  
 CONTENT: 52% Recycled Polyester (34% Pre-/18% Post-Consumer)/48% Polyester  
 BACKING: Acrylic  
 FINISH: Nano-Stain Repellent - PFOA & PFOS Free  
 WIDTH: 54"  
 WEIGHT: 13.44 oz./ln yd  
 VISUAL REPEAT: 0.938 in/2.38 cm H, 0.842 in/2.14 cm V  
 SHOWN RAILROADED: No  
 DIRECTIONAL: No  
 APPROX. ROLL SIZE: 55 yards  
 APPLICATION: Indoor



**PERFORMANCE**



ABRASION RESISTANCE: Passes 63,000 Double Rubs (Wyzenbeek/Cotton Duck)  
 BREAKING STRENGTH: Warp 213.0 / Fill 77.0  
 COLORFASTNESS TO CROCKING: Dry: Class 4 min/Wet: Class 3 min  
 COLORFASTNESS TO LIGHT: 40 hours  
 PILLING RESISTANCE: Class 5  
 SEAM SLIPPAGE: Warp 31.0 / Fill 46.0

**REDUCED ENVIRONMENTAL IMPACT**

GREENGUARD GOLD CERTIFIED  
 PFAS FREE  
 NO FR ADDITIVES  
 NO ANTIMICROBIAL ADDITIVES  
 NO ANTIBACTERIAL ADDITIVES  
 MINDFUL MATERIALS COMPLIANT  
 DOES NOT CONTAIN CONFLICT MINERALS  
 MILLED IN AMERICA

**FLAMMABILITY**

PASSES CAL TB 117-2013  
 NFPA 260/UFAC CLASS 1  
 AB 2998 COMPLIANT

## WARRANTY

STANDARD UPHOLSTERY | '5' FIVE YEAR WARRANTY  
See [Warranty Terms](#) for more information.

## DYE TRANSFER DISCLAIMER

Certain clothing and accessory dyes (such as those used on denim jeans) may migrate to lighter colors. This phenomenon is increased by humidity and temperature and is irreversible. Mayer Fabrics will not assume responsibility for dye transfer caused by external contaminants. Please check compatibility when using this product in combination with painted or varnished surfaces.

## ADDITIONAL INFORMATION

Custom Colors: All patterns can be custom colored. Minimum yardage applies.

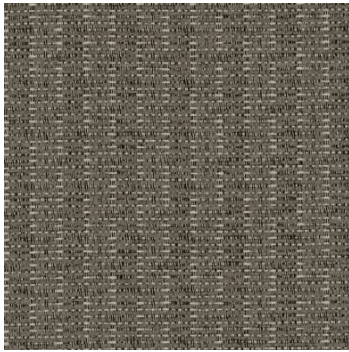
Digital Swatch Color Matching: Due to color variations on different monitors and color printers, actual swatch colors may vary slightly. Please request a memo sample from Mayer Fabrics to ensure proper color representation.

## CLEANING & MAINTENANCE

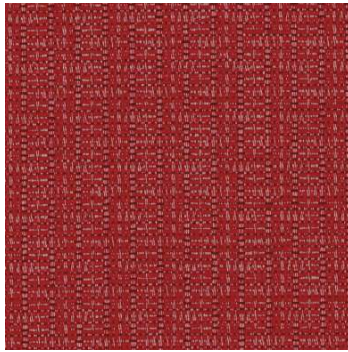
WS: Water/Solvent Cleaner - Spot clean with a mild solvent, an upholstery shampoo, or the foam from a mild detergent. When using a solvent or dry cleaning product, follow instructions carefully and clean only in a well-ventilated room. Avoid any product that contains carbon tetrachloride or other toxic materials. With either method, pretest a small area before proceeding. Always rinse promptly with clean water.

BC: Bleach Cleanable - 1 parts bleach, 9 parts water = 10% bleach, 90% water solution. Do not clean / disinfect fabric for longer than 10 minutes using the 10% bleach solution. Always rinse promptly with clean water after applying the bleach solution. Failure to do so will void any and all warranties.

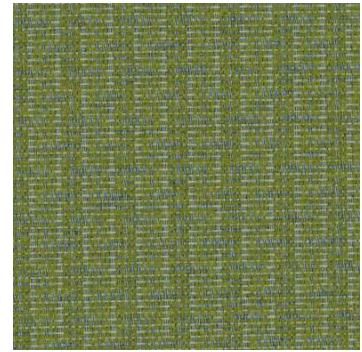
**SYDNEY COLORS (12)**



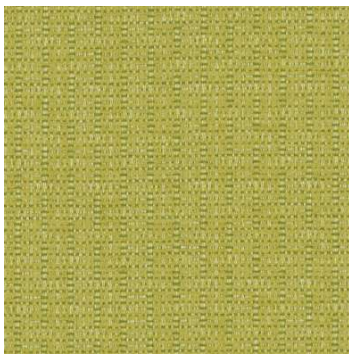
**Taupe**  
456-000



**Crimson**  
456-001



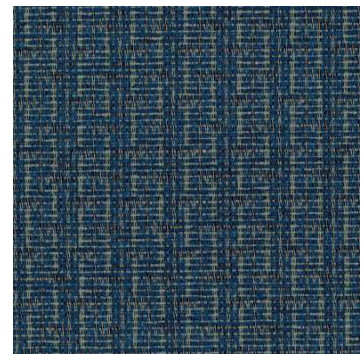
**Leaf**  
456-003



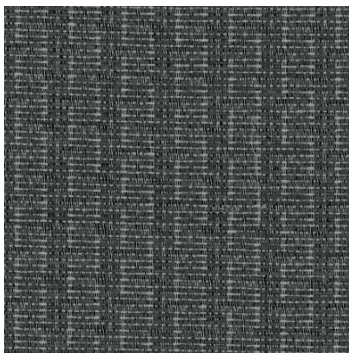
**Citrus**  
456-013



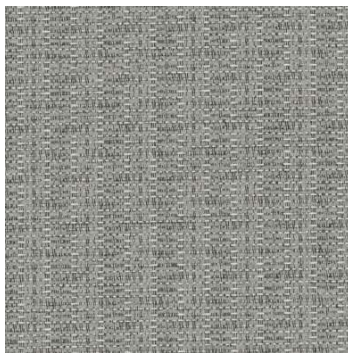
**Pine**  
456-023



**Ocean**  
456-004



**Iron**  
456-006



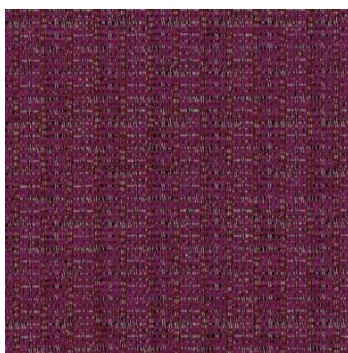
**Silver**  
456-016



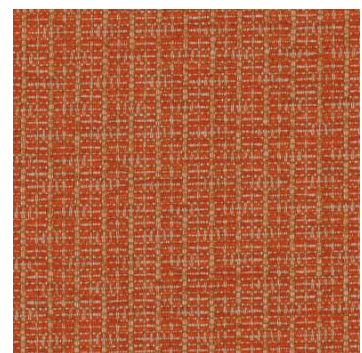
**Oatmeal**  
456-007



**Butterscotch**  
456-017



**Mulberry**  
456-008



**Tangerine**  
456-009