

HAARLEM

447-003, Spring

[Wonderlust Collection](#)

TECHNICAL INFORMATION

CATEGORY: Upholstery

CONTENT: 98% Sunbrella® Acrylic/2% Sunbrella® Polyester

BACKING: Acrylic Latex

FINISH: Liquid and Stain Repel - PFOA & PFOS Free

WIDTH: 54"

WEIGHT: 19.09 oz./ln yd

VISUAL REPEAT: 7.14 in/18.14 cm H, 7.15 in/18.16 cm V

SHOWN RAILROADED: No

DIRECTIONAL: Yes

APPROX. ROLL SIZE: 50 yards

APPLICATION: Indoor / Outdoor / Atrium

PERFORMANCE



ABRASION RESISTANCE: Passes 100,000 Double Rubs*
(Wyzenbeek/Cotton Duck)

BREAKING STRENGTH: Warp 208.0 / Fill 435.0

COLORFASTNESS TO CROCKING: Dry: Class 4 min/Wet: Class 4 min

COLORFASTNESS TO LIGHT: 2000 hours

PILLING RESISTANCE: Class 4 min

SEAM SLIPPAGE: Warp 97.0 / Fill 96.0

* Multiple factors affect fabric durability and appearance retention, including end-user application and proper maintenance.
Wyzenbeek results above 100,000 double rubs have not been shown to be an indicator of increased lifespan.

FLAMMABILITY

PASSES CAL TB 117-2013

NFPA 260/UFAC CLASS 1

AB 2998 COMPLIANT



REDUCED ENVIRONMENTAL IMPACT

GREENGUARD GOLD CERTIFIED

NO FR ADDITIVES

MINDFUL MATERIALS COMPLIANT

FORMALDEHYDE FREE

HPD AVAILABLE

PROP 65 COMPLIANT

MILLED IN AMERICA

REACH COMPLIANT

ROHS COMPLIANT

DOES NOT CONTAIN CONFLICT MINERALS

WARRANTY

STANDARD UPHOLSTERY | '5' FIVE YEAR WARRANTY
See [Warranty Terms](#) for more information.

DYE TRANSFER DISCLAIMER

Certain clothing and accessory dyes (such as those used on denim jeans) may migrate to lighter colors. This phenomenon is increased by humidity and temperature and is irreversible. Mayer Fabrics will not assume responsibility for dye transfer caused by external contaminants. Please check compatibility when using this product in combination with painted or varnished surfaces.

ADDITIONAL INFORMATION

Custom Colors: All patterns can be custom colored. Minimum yardage applies.

Digital Swatch Color Matching: Due to color variations on different monitors and color printers, actual swatch colors may vary slightly. Please request a memo sample from Mayer Fabrics to ensure proper color representation.

CLEANING & MAINTENANCE

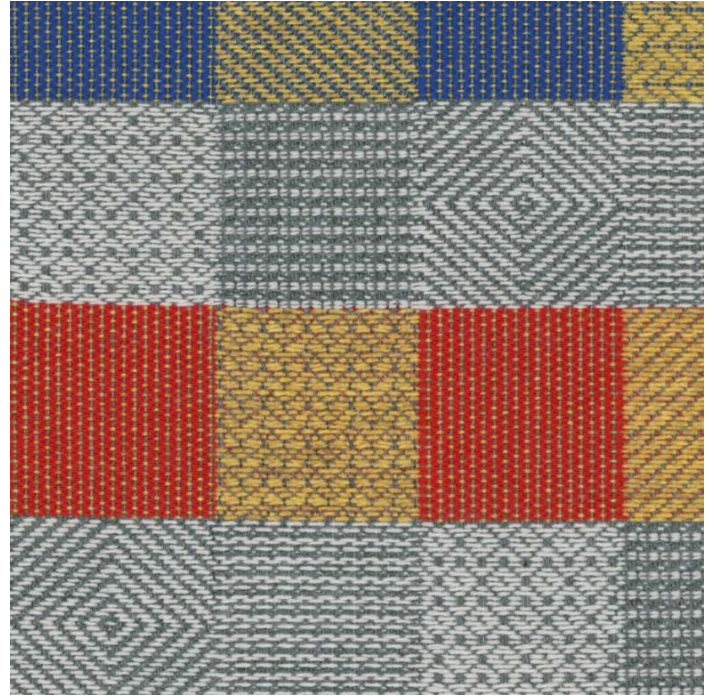
WS: Water/Solvent Cleaner - Spot clean with a mild solvent, an upholstery shampoo, or the foam from a mild detergent. When using a solvent or dry cleaning product, follow instructions carefully and clean only in a well-ventilated room. Avoid any product that contains carbon tetrachloride or other toxic materials. With either method, pretest a small area before proceeding. Always rinse promptly with clean water.

BC: Bleach Cleanable - 1 parts bleach, 9 parts water = 10% bleach, 90% water solution. Do not clean / disinfect fabric for longer than 10 minutes using the 10% bleach solution. Always rinse promptly with clean water after applying the bleach solution. Failure to do so will void any and all warranties.

HAARLEM COLORS (4)



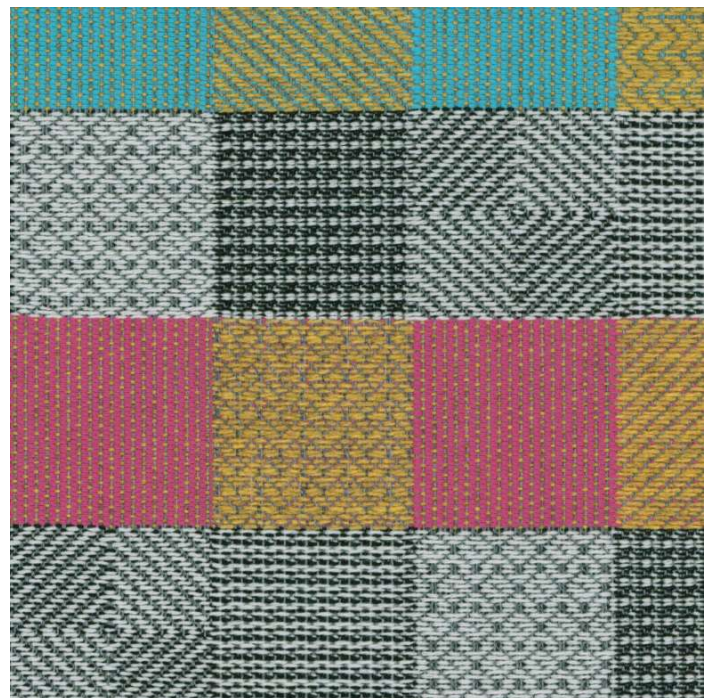
Desert
447-000



Primary
447-011



Big Sky
447-004



Modern
447-014