

PRISM 10

426-037, Alabaster
Spectrum Collection

TECHNICAL INFORMATION

CATEGORY: Upholstery, Panel
CONTENT: 75% Recycled Polyester/75% Post-Consumer Recycled Polyester/25% Polyester
BACKING: Latex
FINISH: Stain Repellent
WIDTH: 54"
WEIGHT: 14.5 oz./ln yd
VISUAL REPEAT: 0.17 in/0.43 cm H, 0.2 in/0.51 cm V
SHOWN RAILROADED: No
DIRECTIONAL: Yes
APPROX. ROLL SIZE: 50 yards

PERFORMANCE



ABRASION RESISTANCE: Passes 105,000 Double Rubs*
(Wyzenbeek/Cotton Duck)

BREAKING STRENGTH: Warp 229.0 / Fill 201.0

COLORFASTNESS TO CROCKING: Dry: Class 4/Wet: Class 4

COLORFASTNESS TO LIGHT: 40 hours

PILLING RESISTANCE: Class 4

SEAM SLIPPAGE: Warp 92.0 / Fill 105.0

* Multiple factors affect fabric durability and appearance retention, including end-user application and proper maintenance. Wyzenbeek results above 100,000 double rubs have not been shown to be an indicator of increased lifespan.

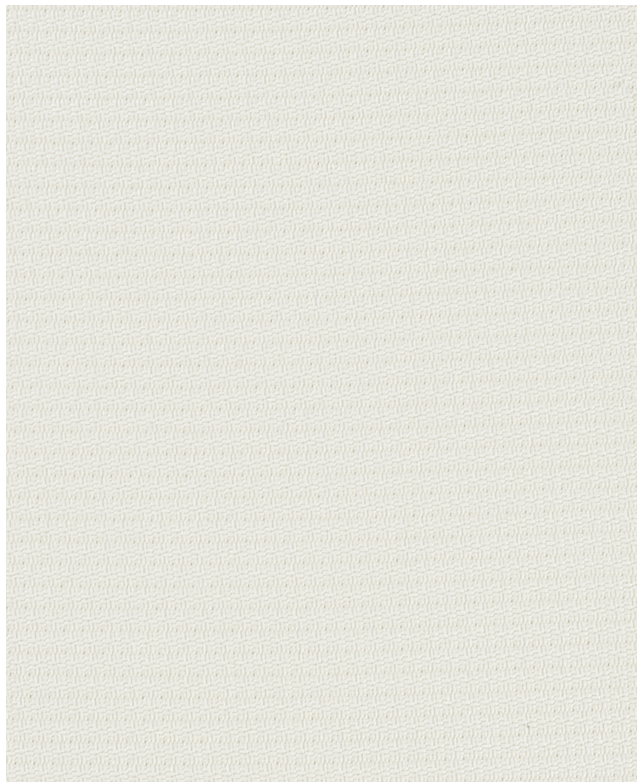
FLAMMABILITY

PASSES CAL TB 117-2013

NFPA 260/UFAC CLASS 1

AB 2998 COMPLIANT

ASTM E84 CLASS 1 OR A (UNADHERED)



REDUCED ENVIRONMENTAL IMPACT

GREENGUARD GOLD CERTIFIED
NO FR ADDITIVES
NO ANTIMICROBIAL ADDITIVES
NO ANTIBACTERIAL ADDITIVES
MINDFUL MATERIALS COMPLIANT
PROP 65 COMPLIANT
REACH COMPLIANT
ROHS COMPLIANT
DOES NOT CONTAIN CONFLICT MINERALS
BERRY COMPLIANT
MILLED IN AMERICA

WARRANTY

SPECTRUM UPHOLSTERY & MULTI-USE COLLECTION | '10' TEN YEAR WARRANTY

See [Warranty Terms](#) for more information.

DYE TRANSFER DISCLAIMER

Certain clothing and accessory dyes (such as those used on denim jeans) may migrate to lighter colors. This phenomenon is increased by humidity and temperature and is irreversible. Mayer Fabrics will not assume responsibility for dye transfer caused by external contaminants. Please check compatibility when using this product in combination with painted or varnished surfaces.

ADDITIONAL INFORMATION

Custom Colors: All patterns can be custom colored. Minimum yardage applies.

Digital Swatch Color Matching: Due to color variations on different monitors and color printers, actual swatch colors may vary slightly. Please request a memo sample from Mayer Fabrics to ensure proper color representation.

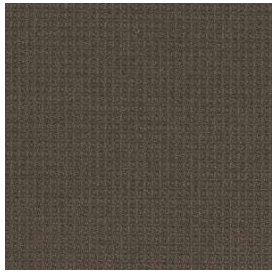
CLEANING & MAINTENANCE

WS: Water/Solvent Cleaner - Spot clean with a mild solvent, an upholstery shampoo, or the foam from a mild detergent. When using a solvent or dry cleaning product, follow instructions carefully and clean only in a well-ventilated room. Avoid any product that contains carbon tetrachloride or other toxic materials. With either method, pretest a small area before proceeding. Always rinse promptly with clean water.

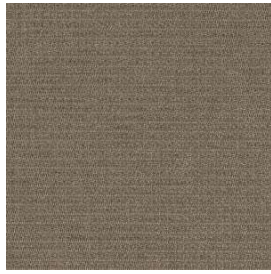


This 100% polyester fabric is included in the Underwriter's Laboratory Fabric Recognition Program. Additional testing of this U.L. recognized component is not required on approved panels from participating manufacturers.

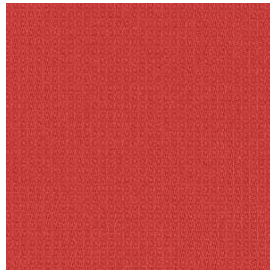
PRISM 10 COLORS (25)



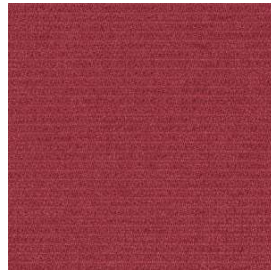
Espresso
426-000



Mocha
426-010



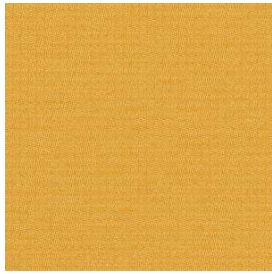
Lipstick
426-001



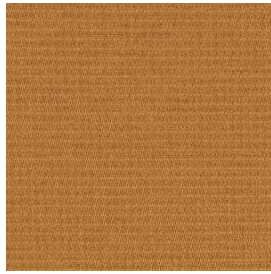
Claret
426-011



Tomato
426-021



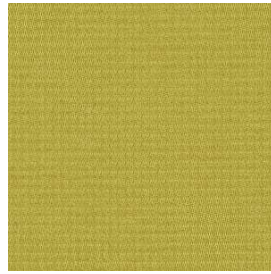
Topaz
426-002



Caramel
426-012



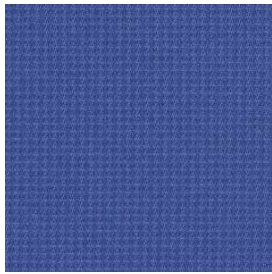
Kale
426-003



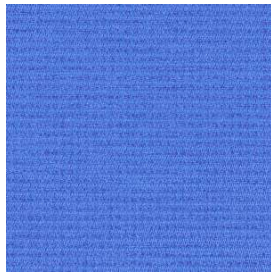
Olive
426-013



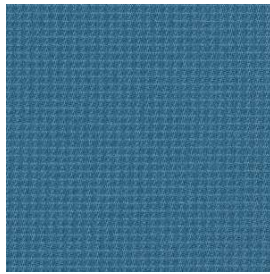
Asparagus
426-023



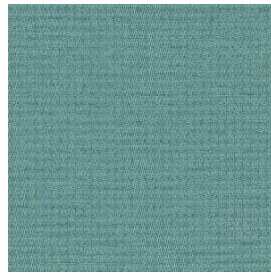
Indigo
426-004



Cornflower
426-014



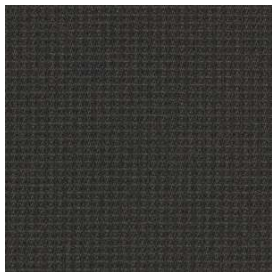
Caribbean
426-024



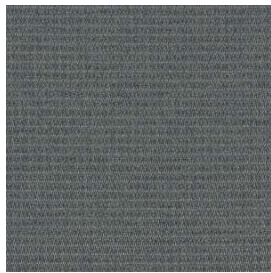
Cerulean
426-034



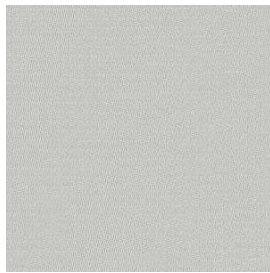
Plum
426-005



Onyx
426-006



Charcoal
426-016



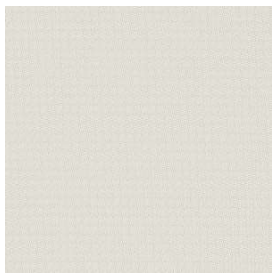
Dove
426-026



Cafe Au Lait
426-007



Stone
426-017



Zinc
426-027



Alabaster
426-037



Raisin
426-008



Clementine
426-009



Clay
426-019