

VARIANT 10

425-026, Aluminum

Spectrum Collection

TECHNICAL INFORMATION

CATEGORY: Upholstery, Panel

CONTENT: 75% Recycled Polyester/75% Post-Consumer Recycled Polyester/25% Polyester

BACKING: Latex

FINISH: Stain Repellent

WIDTH: 54"

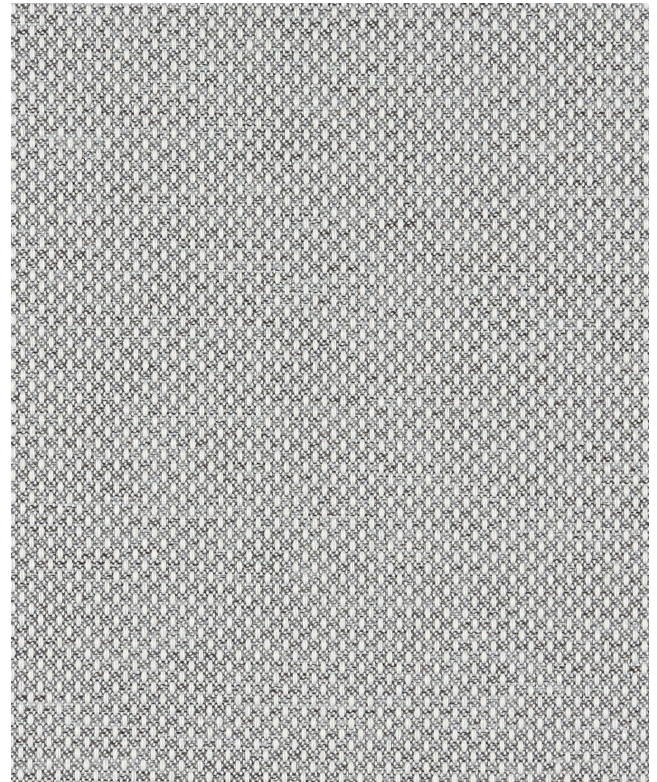
WEIGHT: 14.5 oz./ln yd

VISUAL REPEAT: 0.17 in/0.43 cm H, 0.2 in/0.51 cm V

SHOWN RAILROADED: No

DIRECTIONAL: Yes

APPROX. ROLL SIZE: 50 yards



PERFORMANCE



ABRASION RESISTANCE: Passes 140,000 Double Rubs* (Wyzenbeek/Cotton Duck)

BREAKING STRENGTH: Warp 185.0 / Fill 254.0

COLORFASTNESS TO CROCKING: Dry: Class 4/Wet: Class 4

COLORFASTNESS TO LIGHT: 40 hours

PILLING RESISTANCE: Class 4

SEAM SLIPPAGE: Warp 105.0 / Fill 141.0

* Multiple factors affect fabric durability and appearance retention, including end-user application and proper maintenance. Wyzenbeek results above 100,000 double rubs have not been shown to be an indicator of increased lifespan.

FLAMMABILITY

PASSES CAL TB 117-2013

NFPA 260/UFAC CLASS 1

AB 2998 COMPLIANT

ASTM E84 CLASS 1 OR A (UNADHERED)

REDUCED ENVIRONMENTAL IMPACT

GREENGUARD GOLD CERTIFIED

NO FR ADDITIVES

NO ANTIMICROBIAL ADDITIVES

NO ANTIBACTERIAL ADDITIVES

MINDFUL MATERIALS COMPLIANT

PROP 65 COMPLIANT

REACH COMPLIANT

ROHS COMPLIANT

DOES NOT CONTAIN CONFLICT MINERALS

BERRY COMPLIANT

MILLED IN AMERICA

WARRANTY

SPECTRUM UPHOLSTERY & MULTI-USE COLLECTION | '10' TEN YEAR WARRANTY

See [Warranty Terms](#) for more information.

DYE TRANSFER DISCLAIMER

Certain clothing and accessory dyes (such as those used on denim jeans) may migrate to lighter colors. This phenomenon is increased by humidity and temperature and is irreversible. Mayer Fabrics will not assume responsibility for dye transfer caused by external contaminants. Please check compatibility when using this product in combination with painted or varnished surfaces.

ADDITIONAL INFORMATION

Custom Colors: All patterns can be custom colored. Minimum yardage applies.

Digital Swatch Color Matching: Due to color variations on different monitors and color printers, actual swatch colors may vary slightly. Please request a memo sample from Mayer Fabrics to ensure proper color representation.

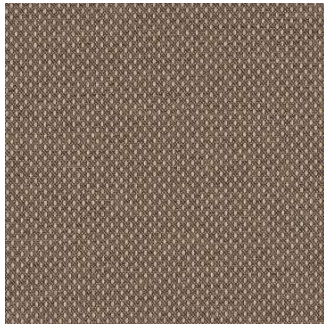
CLEANING & MAINTENANCE

WS: Water/Solvent Cleaner - Spot clean with a mild solvent, an upholstery shampoo, or the foam from a mild detergent. When using a solvent or dry cleaning product, follow instructions carefully and clean only in a well-ventilated room. Avoid any product that contains carbon tetrachloride or other toxic materials. With either method, pretest a small area before proceeding. Always rinse promptly with clean water.



This 100% polyester fabric is included in the Underwriter's Laboratory Fabric Recognition Program. Additional testing of this U.L. recognized component is not required on approved panels from participating manufacturers.

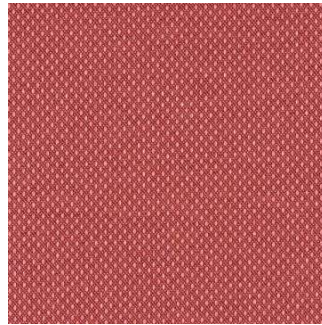
VARIANT 10 COLORS (16)



Chocolate
425-000



Cocoa
425-010



Barn Red
425-001



Mustard
425-002



Palm
425-003



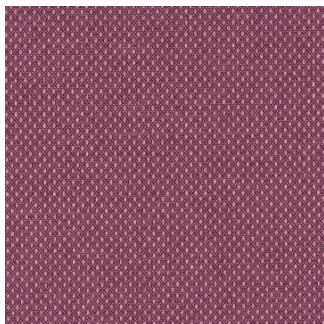
Jungle
425-013



Ink
425-004



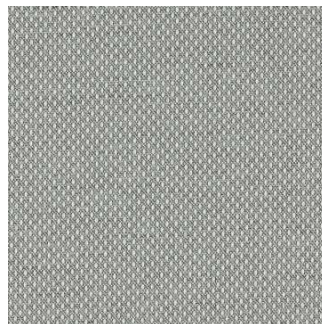
Prussian
425-014



Aubergine
425-005



Carbon
425-006



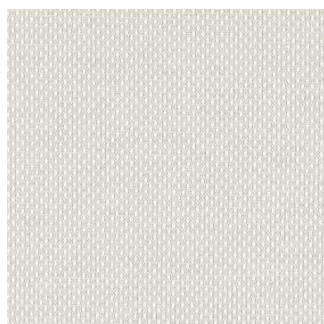
Flint
425-016



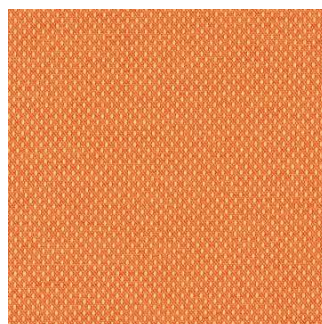
Aluminum
425-026



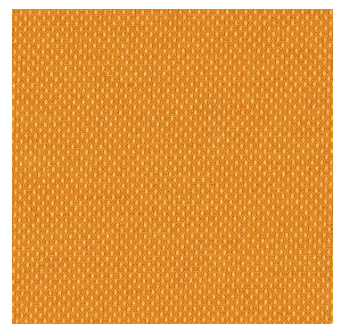
Biscuit
425-007



Creme
425-017



Persimmon
425-009



Orange Peel
425-019