

SOLEIL

416-016, Charcoal

TECHNICAL INFORMATION

CATEGORY: Upholstery
CONTENT: 59% Sunbrella® Solution-Dyed Acrylic/41% Sunbrella® Solution-Dyed Polyester
BACKING: None
FINISH: Sunbrella® Contract - PFOA & PFOS Free
WIDTH: 54"
WEIGHT: 13.9 oz./ln yd
VISUAL REPEAT: 0.0 in/0.00 cm H, 0.125 in/0.32 cm V
SHOWN RAILROADED: No
DIRECTIONAL: Yes
APPROX. ROLL SIZE: 60 yards
APPLICATION: Indoor / Outdoor / Atrium



PERFORMANCE



ABRASION RESISTANCE: Passes 100,000 Double Rubs*
(Wyzenbeek/Cotton Duck)

BREAKING STRENGTH: Warp 305.0 / Fill 219.0

COLORFASTNESS TO CROCKING: Dry: Class 4 min/Wet: Class 4 min

COLORFASTNESS TO LIGHT: Grade 4 at 2000 hours

PILLING RESISTANCE: Class 4

SEAM SLIPPAGE: Warp 40.0 / Fill 48.0

* Multiple factors affect fabric durability and appearance retention, including end-user application and proper maintenance.
Wyzenbeek results above 100,000 double rubs have not been shown to be an indicator of increased lifespan.

REDUCED ENVIRONMENTAL IMPACT

GREENGUARD GOLD CERTIFIED
NO FR ADDITIVES
PROP 65 COMPLIANT
ROHS COMPLIANT
MILLED IN AMERICA
DOES NOT CONTAIN CONFLICT MINERALS

FLAMMABILITY

PASSES NFPA 260/UFAC CLASS 1

AB 2998 COMPLIANT

CAL 117 SECTION E

WARRANTY

STANDARD UPHOLSTERY | '5' FIVE YEAR WARRANTY
See [Warranty Terms](#) for more information.

DYE TRANSFER DISCLAIMER

Certain clothing and accessory dyes (such as those used on denim jeans) may migrate to lighter colors. This phenomenon is increased by humidity and temperature and is irreversible. Mayer Fabrics will not assume responsibility for dye transfer caused by external contaminants. Please check compatibility when using this product in combination with painted or varnished surfaces.

ADDITIONAL INFORMATION

Custom Colors: All patterns can be custom colored. Minimum yardage applies.

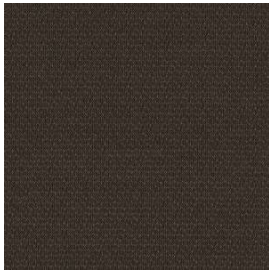
Digital Swatch Color Matching: Due to color variations on different monitors and color printers, actual swatch colors may vary slightly. Please request a memo sample from Mayer Fabrics to ensure proper color representation.

CLEANING & MAINTENANCE

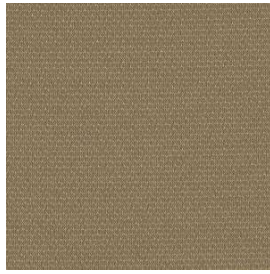
WS: Water/Solvent Cleaner - Spot clean with a mild solvent, an upholstery shampoo, or the foam from a mild detergent. When using a solvent or dry cleaning product, follow instructions carefully and clean only in a well-ventilated room. Avoid any product that contains carbon tetrachloride or other toxic materials. With either method, pretest a small area before proceeding. Always rinse promptly with clean water.

BC: Bleach Cleanable - 1 parts bleach, 4 parts water = 20% bleach, 80% water solution. Do not clean / disinfect fabric for longer than 10 minutes using the 20% bleach solution. Always rinse promptly with clean water after applying the bleach solution. Failure to do so will void any and all warranties.

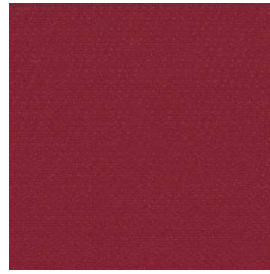
SOLEIL COLORS (19)



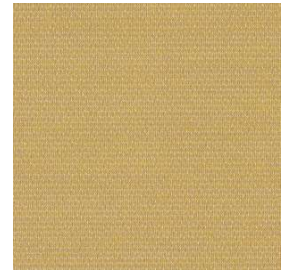
Espresso
416-000



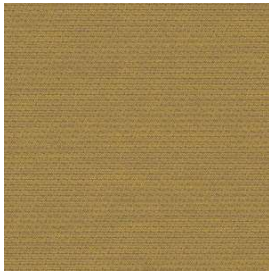
Bronze
416-010



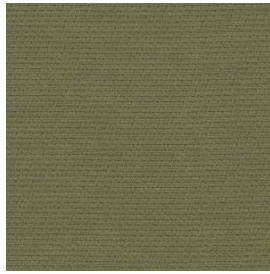
Crimson
416-001



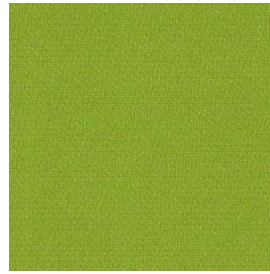
Jonquil
416-002



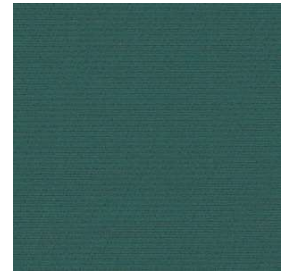
Dijon
416-012



Jade
416-003



Wasabi
416-013



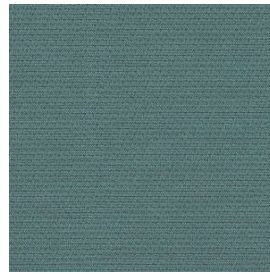
Teal
416-023



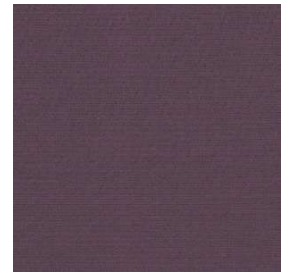
Indigo
416-004



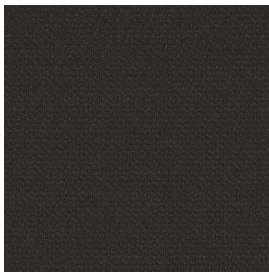
Cerulean
416-014



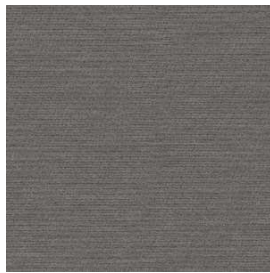
Turquoise
416-024



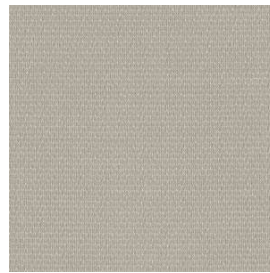
Orchid
416-005



Onyx
416-006



Charcoal
416-016



Silver
416-026



Linen
416-007



Parchment
416-017



Coral
416-009



Tangerine
416-019