

INTRIGUE

382-003, Celadon

TECHNICAL INFORMATION

CATEGORY: Upholstery
 CONTENT: 68% Polyester/32% Post-Consumer Recycled Polyester
 BACKING: None
 FINISH: None
 WIDTH: 54"
 WEIGHT: 11 oz./ln yd
 VISUAL REPEAT: 5.375 in/13.65 cm H, 0.1875 in/0.48 cm V
 SHOWN RAILROADED: Yes
 DIRECTIONAL: Yes
 APPROX. ROLL SIZE: 60 yards
 APPLICATION: Indoor

PERFORMANCE



ABRASION RESISTANCE: Passes 175,000 Double Rubs*
 (Wyzenbeek/Cotton Duck)

BREAKING STRENGTH: Warp 199.0 / Fill 383.0

COLORFASTNESS TO CROCKING: Dry: Class 4 min/Wet: Class 4 min

COLORFASTNESS TO LIGHT: 60 hours

PILLING RESISTANCE: Class 4

SEAM SLIPPAGE: Warp 57.0 / Fill 74.0

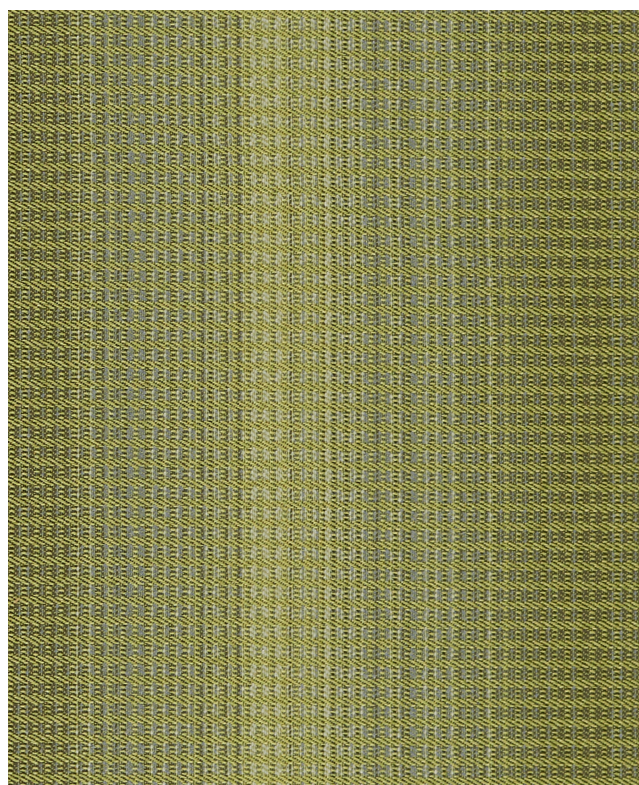
* Multiple factors affect fabric durability and appearance retention, including end-user application and proper maintenance.
 Wyzenbeek results above 100,000 double rubs have not been shown to be an indicator of increased lifespan.

FLAMMABILITY

PASSES CAL TB 117-2013

NFPA 260/UFAC CLASS 1

AB 2998 COMPLIANT



REDUCED ENVIRONMENTAL IMPACT

GREENGUARD GOLD CERTIFIED

PFAS FREE

NO FR ADDITIVES

HHI / GREENHEALTH COMPLIANT

NO ANTIMICROBIAL ADDITIVES

NO ANTIBACTERIAL ADDITIVES

BPA FREE

FORMALDEHYDE FREE

PROP 65 COMPLIANT

REACH COMPLIANT

ROHS COMPLIANT

DOES NOT CONTAIN CONFLICT MINERALS

WARRANTY

STANDARD UPHOLSTERY | '5' FIVE YEAR WARRANTY
See [Warranty Terms](#) for more information.

DYE TRANSFER DISCLAIMER

Certain clothing and accessory dyes (such as those used on denim jeans) may migrate to lighter colors. This phenomenon is increased by humidity and temperature and is irreversible. Mayer Fabrics will not assume responsibility for dye transfer caused by external contaminants. Please check compatibility when using this product in combination with painted or varnished surfaces.

ADDITIONAL INFORMATION

Custom Colors: All patterns can be custom colored. Minimum yardage applies.

Digital Swatch Color Matching: Due to color variations on different monitors and color printers, actual swatch colors may vary slightly. Please request a memo sample from Mayer Fabrics to ensure proper color representation.

CLEANING & MAINTENANCE

WS: Water/Solvent Cleaner - Spot clean with a mild solvent, an upholstery shampoo, or the foam from a mild detergent. When using a solvent or dry cleaning product, follow instructions carefully and clean only in a well-ventilated room. Avoid any product that contains carbon tetrachloride or other toxic materials. With either method, pretest a small area before proceeding. Always rinse promptly with clean water.