

## ARTISTRY

368-003, Celadon

### TECHNICAL INFORMATION

CATEGORY: Upholstery  
CONTENT: 100% Polyester  
BACKING: SBR Latex  
FINISH: Stain Repellent  
WIDTH: 54"  
WEIGHT: 10.8 oz./ln yd  
VISUAL REPEAT: 3.5 in/8.89 cm H, 4.8 in/12.19 cm V  
SHOWN RAILROADED: No  
DIRECTIONAL: Yes  
APPROX. ROLL SIZE: 60 yards

### PERFORMANCE



ABRASION RESISTANCE: Passes 60,000 Double Rubs  
(Wyzenbeek/Cotton Duck)  
BREAKING STRENGTH: Warp 249.0 / Fill 258.0  
COLORFASTNESS TO CROCKING: Dry: Class 4 min/Wet: Class 3 min  
COLORFASTNESS TO LIGHT: 4 min at 40 hours  
PILLING RESISTANCE: Class 5  
SEAM SLIPPAGE: Warp 43.0 / Fill 72.0

### FLAMMABILITY

PASSES CAL TB 117-2013  
NFPA 260/UFAC CLASS 1  
AB 2998 COMPLIANT  
CAL 117 SECTION E  
MAY COMPLY WITH CAL. TECH. BUL. 133 WHEN COMBINED WITH APPROPRIATE COMPONENTS.



### REDUCED ENVIRONMENTAL IMPACT

GREENGUARD GOLD CERTIFIED  
DOES NOT CONTAIN CONFLICT MINERALS

## **DYE TRANSFER DISCLAIMER**

Certain clothing and accessory dyes (such as those used on denim jeans) may migrate to lighter colors. This phenomenon is increased by humidity and temperature and is irreversible. Mayer Fabrics will not assume responsibility for dye transfer caused by external contaminants. Please check compatibility when using this product in combination with painted or varnished surfaces.

## **ADDITIONAL INFORMATION**

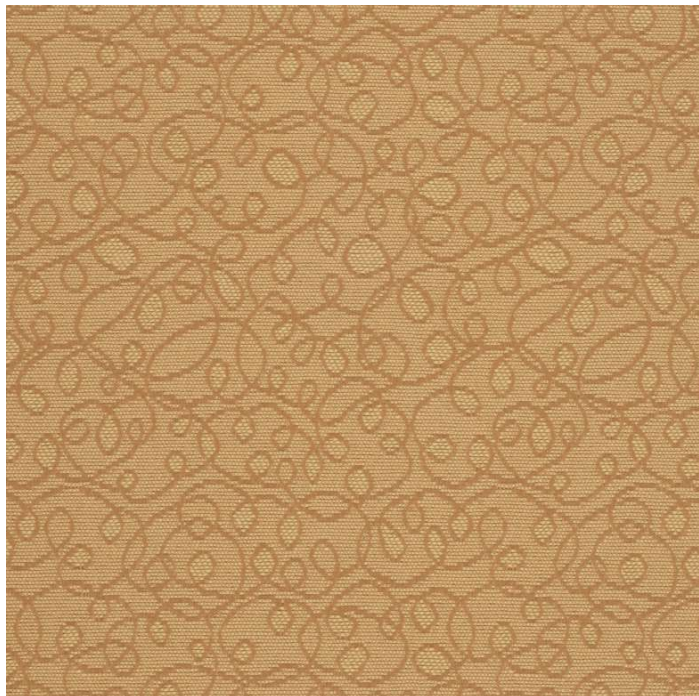
Custom Colors: All patterns can be custom colored. Minimum yardage applies.

Digital Swatch Color Matching: Due to color variations on different monitors and color printers, actual swatch colors may vary slightly. Please request a memo sample from Mayer Fabrics to ensure proper color representation.

## **CLEANING & MAINTENANCE**

S: Solvent Cleaner - Spot clean, using a mild water-free solvent or dry cleaning product. Clean only in a well-ventilated room and avoid any product containing carbon tetrachloride or other toxic materials. Pretest a small area before proceeding.

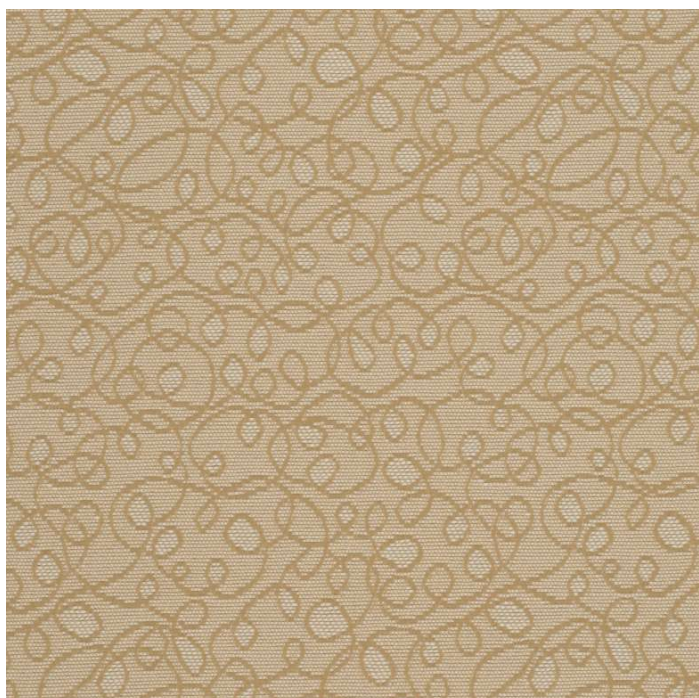
**ARTISTRY COLORS (4)**



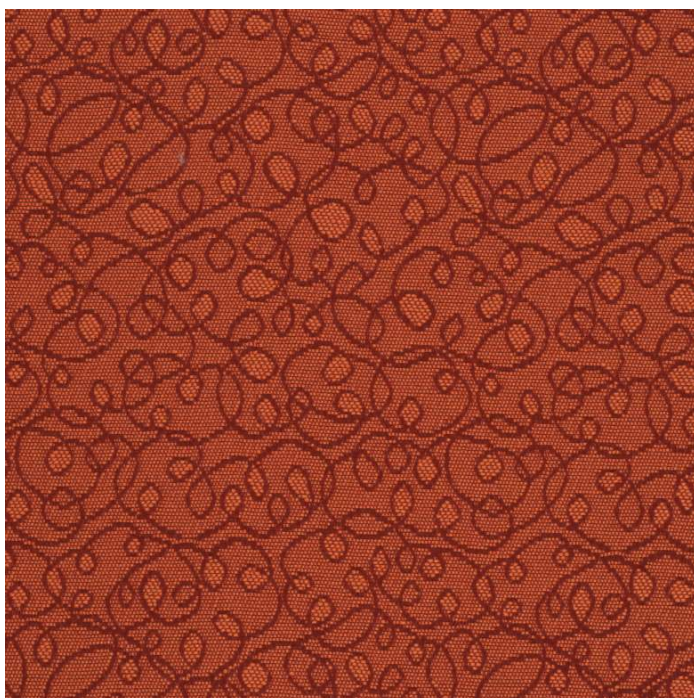
**Cornsilk**  
368-002



**Celadon**  
368-003



**Parchment**  
368-007



**Tangerine**  
368-009