

VENUE

359-014, Bluebell

TECHNICAL INFORMATION

CATEGORY: Upholstery, Panel

CONTENT: 100% Recycled Polyester (60% Pre-/40% Post-Consumer)

BACKING: Eco Polyester

FINISH: None

WIDTH: 54"

WEIGHT: 7.8 oz./ln yd

VISUAL REPEAT: 1.2 in/3.05 cm H, 1.75 in/4.44 cm V

SHOWN RAILOADED: No

DIRECTIONAL: Yes

APPROX. ROLL SIZE: 60 yards

PERFORMANCE

ABRASION RESISTANCE: Passes 60,000 Double Rubs (Wyzenbeek/Cotton Duck)

BREAKING STRENGTH: Warp 159.0 / Fill 115.0

COLORFASTNESS TO CROCKING: Dry: Class 4/Wet: Class 4

COLORFASTNESS TO LIGHT: 40 hours

PILLING RESISTANCE: Class 4

SEAM SLIPPAGE: Warp 39.0 / Fill 41.0

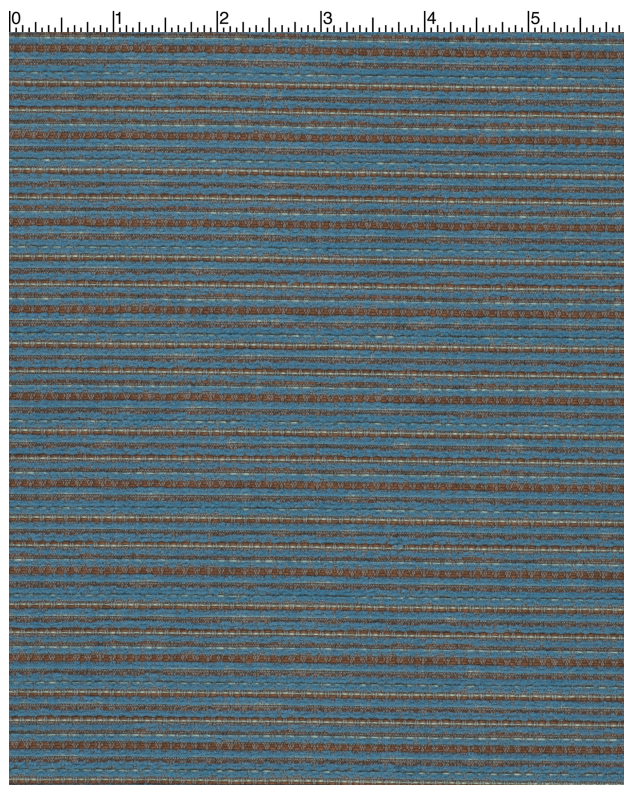
FLAMMABILITY

PASSES NFPA 260/UFAC CLASS 1

AB 2998 COMPLIANT

CAL 117 SECTION E

MAY COMPLY WITH CAL. TECH. BUL. 133 WHEN COMBINED WITH APPROPRIATE COMPONENTS.

**REDUCED ENVIRONMENTAL IMPACT**

GREENGUARD GOLD CERTIFIED

HHI / GREENHEALTH COMPLIANT

MILLED IN AMERICA

DOES NOT CONTAIN CONFLICT MINERALS

WARRANTY

STANDARD UPHOLSTERY | '5' FIVE YEAR WARRANTY
See [Warranty Terms](#) for more information.

DYE TRANSFER DISCLAIMER

Certain clothing and accessory dyes (such as those used on denim jeans) may migrate to lighter colors. This phenomenon is increased by humidity and temperature and is irreversible. Mayer Fabrics will not assume responsibility for dye transfer caused by external contaminants. Please check compatibility when using this product in combination with painted or varnished surfaces.

ADDITIONAL INFORMATION

Custom Colors: All patterns can be custom colored. Minimum yardage applies.

Digital Swatch Color Matching: Due to color variations on different monitors and color printers, actual swatch colors may vary slightly. Please request a memo sample from Mayer Fabrics to ensure proper color representation.

CLEANING & MAINTENANCE

WS: Water/Solvent Cleaner - Spot clean with a mild solvent, an upholstery shampoo, or the foam from a mild detergent. When using a solvent or dry cleaning product, follow instructions carefully and clean only in a well-ventilated room. Avoid any product that contains carbon tetrachloride or other toxic materials. With either method, pretest a small area before proceeding. Always rinse promptly with clean water.



This 100% polyester fabric is included in the Underwriter's Laboratory Fabric Recognition Program. Additional testing of this U.L. recognized component is not required on approved panels from participating manufacturers.