

MARVEL

342-024, Aqua

TECHNICAL INFORMATION

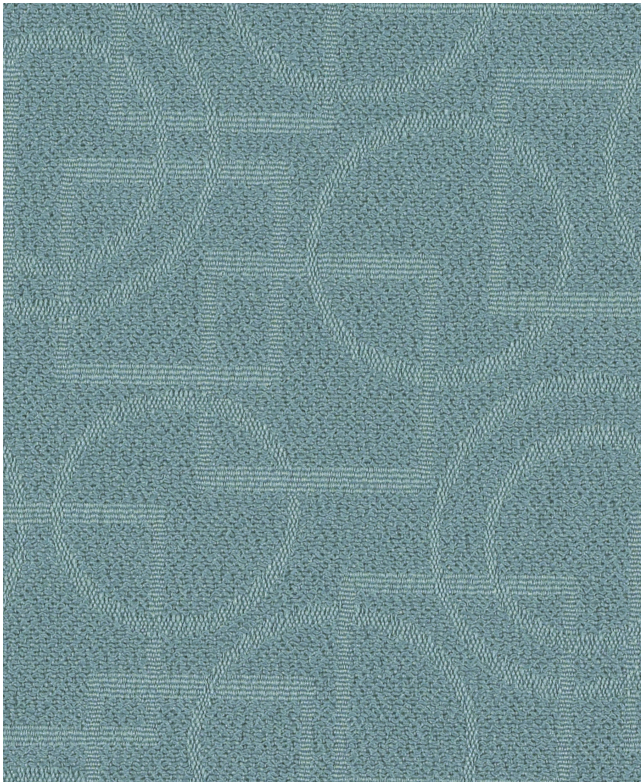
CATEGORY: Upholstery
CONTENT: 100% Post-Consumer Recycled Polyester
BACKING: None
FINISH: None
WIDTH: 54"
WEIGHT: 18 oz./ln yd
VISUAL REPEAT: 6.75 in/17.14 cm H, 7.75 in/19.68 cm V
SHOWN RAILROADED: No
DIRECTIONAL: Yes
APPROX. ROLL SIZE: 30 yards

PERFORMANCE



ABRASION RESISTANCE: Passes 147,000 Double Rubs*
(Wyzenbeek/Cotton Duck)
BREAKING STRENGTH: Warp 374.0 / Fill 271.0
COLORFASTNESS TO CROCKING: Dry: Class 4 min/Wet: Class 4 min
COLORFASTNESS TO LIGHT: 40 hours
PILLING RESISTANCE: Class 4.0
SEAM SLIPPAGE: Warp 72.0 / Fill 133.0

* Multiple factors affect fabric durability and appearance retention, including end-user application and proper maintenance.
Wyzenbeek results above 100,000 double rubs have not been shown to be an indicator of increased lifespan.



REDUCED ENVIRONMENTAL IMPACT
GREENGUARD GOLD CERTIFIED
DOES NOT CONTAIN CONFLICT MINERALS

DYE TRANSFER DISCLAIMER

Certain clothing and accessory dyes (such as those used on denim jeans) may migrate to lighter colors. This phenomenon is increased by humidity and temperature and is irreversible. Mayer Fabrics will not assume responsibility for dye transfer caused by external contaminants. Please check compatibility when using this product in combination with painted or varnished surfaces.

ADDITIONAL INFORMATION

Custom Colors: All patterns can be custom colored. Minimum yardage applies.

Digital Swatch Color Matching: Due to color variations on different monitors and color printers, actual swatch colors may vary slightly. Please request a memo sample from Mayer Fabrics to ensure proper color representation.

CLEANING & MAINTENANCE

WS: Water/Solvent Cleaner - Spot clean with a mild solvent, an upholstery shampoo, or the foam from a mild detergent. When using a solvent or dry cleaning product, follow instructions carefully and clean only in a well-ventilated room. Avoid any product that contains carbon tetrachloride or other toxic materials. With either method, pretest a small area before proceeding. Always rinse promptly with clean water.