

MIRA

330-006, Slate

[Seaqual Initiative Collection](#)

TECHNICAL INFORMATION

CATEGORY: Upholstery

CONTENT: 37% Olefin/35% SEAQUAL® YARN (Post-Consumer Recycled Polyester)/28% Polyester

BACKING: Acrylic

FINISH: Stain Repellent - PFAS Free

WIDTH: 54"

WEIGHT: 12.94 oz./ln yd

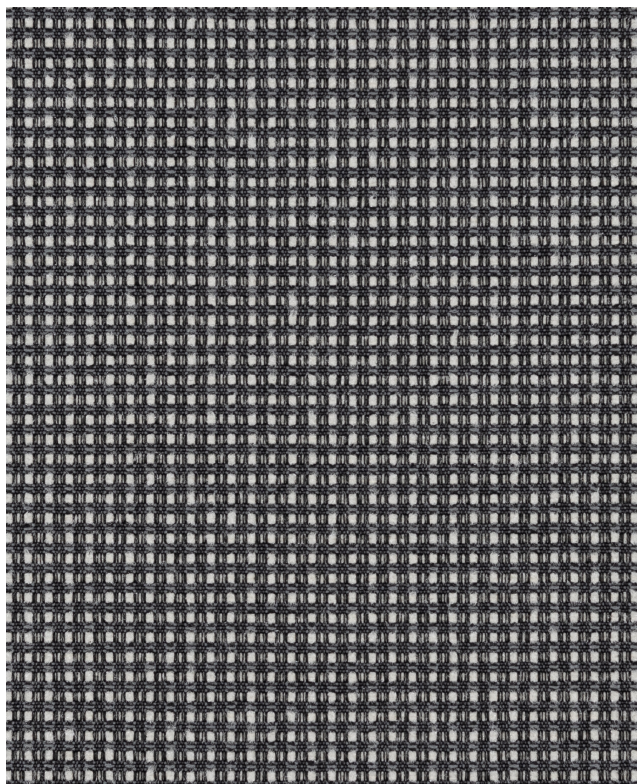
VISUAL REPEAT: 0.188 in/0.48 cm H, 0.188 in/0.48 cm V

SHOWN RAILROADED: No

DIRECTIONAL: Yes

APPROX. ROLL SIZE: 60 yards

APPLICATION: Indoor



PERFORMANCE



ABRASION RESISTANCE: Exceeds 100,000 Double Rubs*
(Wyzenbeek/Cotton Duck)

BREAKING STRENGTH: Warp 166.0 / Fill 163.0

COLORFASTNESS TO CROCKING: Dry: Class 4 min/Wet: Class 3 min

COLORFASTNESS TO LIGHT: 40 hours

PILLING RESISTANCE: Class 4

SEAM SLIPPAGE: Warp 101.0 / Fill 99.0

* Multiple factors affect fabric durability and appearance retention, including end-user application and proper maintenance.
Wyzenbeek results above 100,000 double rubs have not been shown to be an indicator of increased lifespan.

REDUCED ENVIRONMENTAL IMPACT

GREENGUARD GOLD CERTIFIED

PFAS FREE

NO FR ADDITIVES

HHI / GREENHEALTH COMPLIANT

NO ANTIBACTERIAL ADDITIVES

HPD AVAILABLE

PROP 65 COMPLIANT

MILLED IN AMERICA

REACH COMPLIANT

DOES NOT CONTAIN CONFLICT MINERALS

FLAMMABILITY

PASSES CAL TB 117-2013

NFPA 260/UFAC CLASS 1

AB 2998 COMPLIANT

WARRANTY

STANDARD UPHOLSTERY | '5' FIVE YEAR WARRANTY
See [Warranty Terms](#) for more information.

DYE TRANSFER DISCLAIMER

Certain clothing and accessory dyes (such as those used on denim jeans) may migrate to lighter colors. This phenomenon is increased by humidity and temperature and is irreversible. Mayer Fabrics will not assume responsibility for dye transfer caused by external contaminants. Please check compatibility when using this product in combination with painted or varnished surfaces.

ADDITIONAL INFORMATION

Custom Colors: All patterns can be custom colored. Minimum yardage applies.

Digital Swatch Color Matching: Due to color variations on different monitors and color printers, actual swatch colors may vary slightly. Please request a memo sample from Mayer Fabrics to ensure proper color representation.

CLEANING & MAINTENANCE

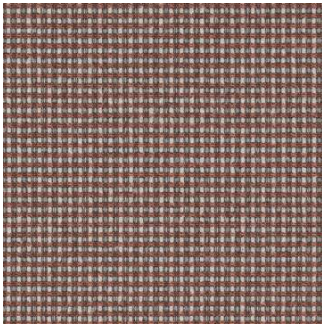
WS: Water/Solvent Cleaner - Spot clean with a mild solvent, an upholstery shampoo, or the foam from a mild detergent. When using a solvent or dry cleaning product, follow instructions carefully and clean only in a well-ventilated room. Avoid any product that contains carbon tetrachloride or other toxic materials. With either method, pretest a small area before proceeding. Always rinse promptly with clean water.

BC: Bleach Cleanable - 1 parts bleach, 9 parts water = 10% bleach, 90% water solution. Do not clean / disinfect fabric for longer than 10 minutes using the 10% bleach solution. Always rinse promptly with clean water after applying the bleach solution. Failure to do so will void any and all warranties.

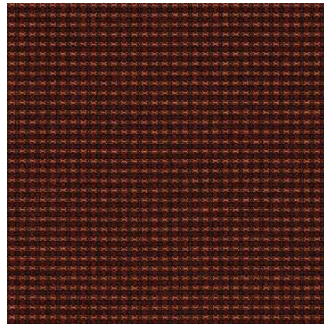
SEAQUAL INITIATIVE

TOGETHER FOR A CLEAN OCEAN

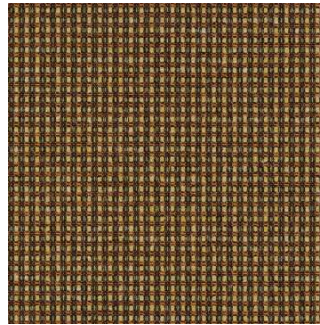
MIRA COLORS (14)



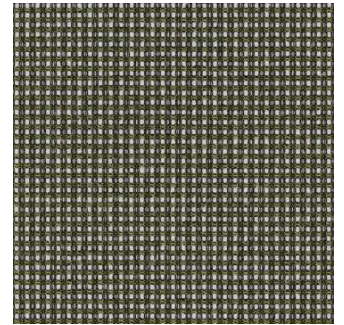
Watermelon
330-001



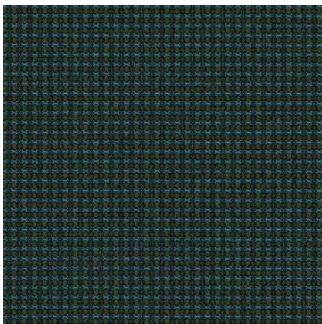
Sangria
330-011



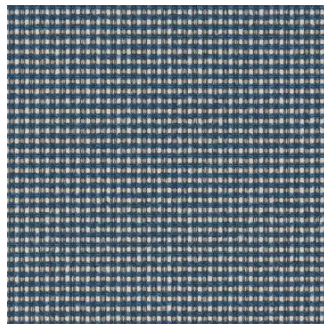
Dijon
330-002



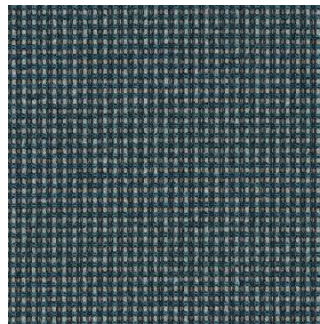
Spring
330-003



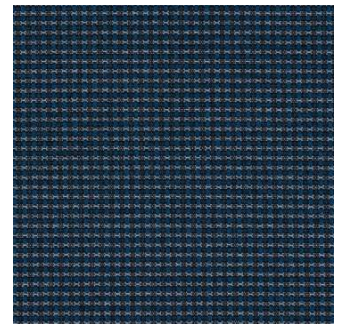
Grotto
330-013



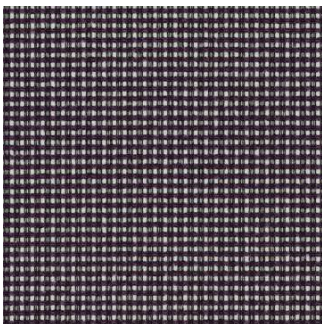
Sky
330-004



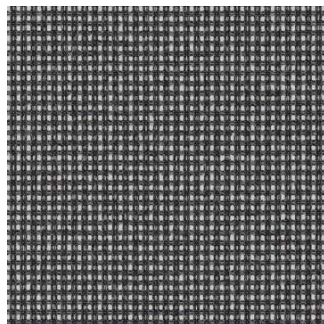
Water
330-014



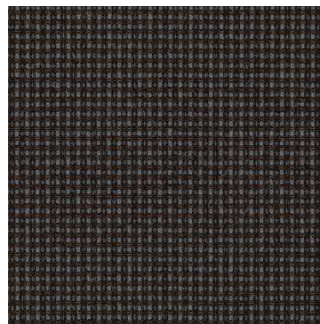
Denim
330-024



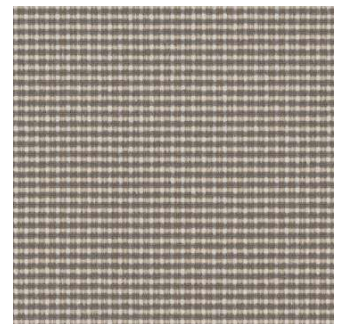
Grape
330-005



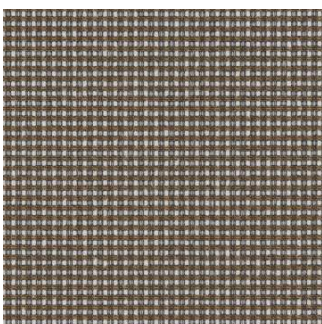
Slate
330-006



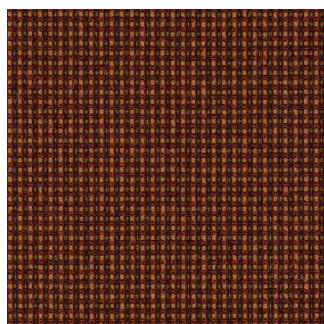
Charcoal
330-016



Almond
330-007



Straw
330-017



Fire
330-009