

RIVIERA

327-011, Petal
Getaway Collection

TECHNICAL INFORMATION

CATEGORY: Upholstery
CONTENT: 96% Recycled Olefin/4% Polyester
BACKING: Acrylic
FINISH: Stain Repellent - PFAS Free
WIDTH: 54"
WEIGHT: 17.1 oz./ln yd
VISUAL REPEAT: 0 in/0.00 cm H, 11 in/27.94 cm V
SHOWN RAILROADED: No
DIRECTIONAL: Yes
APPROX. ROLL SIZE: 38 yards
APPLICATION: Indoor / Outdoor / Atrium

PERFORMANCE

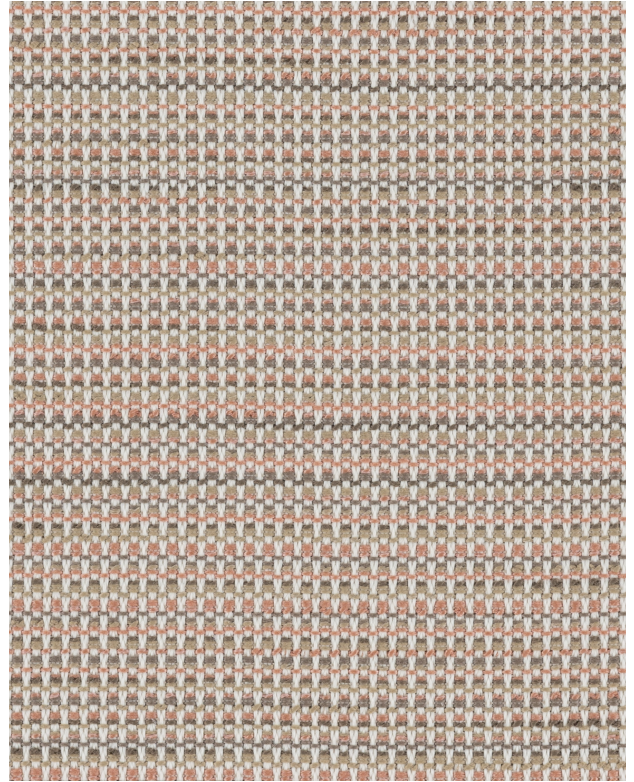


ABRASION RESISTANCE: Exceeds 100,000 Double Rubs*
(Wyzenbeek/Wire Screen)
BREAKING STRENGTH: Warp 281.0 / Fill 368.0
COLORFASTNESS TO CROCKING: Dry: Class 4 min/Wet: Class 4 min
COLORFASTNESS TO LIGHT: 1500 hours
PILLING RESISTANCE: Class 4.5
SEAM SLIPPAGE: Warp 45.0 / Fill 45.0

* Multiple factors affect fabric durability and appearance retention, including end-user application and proper maintenance. Wyzenbeek results above 100,000 double rubs have not been shown to be an indicator of increased lifespan.

FLAMMABILITY

PASSES CAL TB 117-2013
NFPA 260/UFAC CLASS 1
AB 2998 COMPLIANT



REDUCED ENVIRONMENTAL IMPACT

GREENGUARD GOLD CERTIFIED
PFAS FREE
NO FR ADDITIVES
HHI / GREENHEALTH COMPLIANT
NO ANTIMICROBIAL ADDITIVES
NO ANTIBACTERIAL ADDITIVES
ANTIMONY FREE
BPA FREE
LEAD/HEAVY METAL FREE
FORMALDEHYDE FREE
TRIS FREE
OEKO-TEX STANDARD 100
PROP 65 COMPLIANT
REACH COMPLIANT
ROHS COMPLIANT
RED LIST FREE
DOES NOT CONTAIN CONFLICT MINERALS

WARRANTY

STANDARD UPHOLSTERY | '5' FIVE YEAR WARRANTY
See [Warranty Terms](#) for more information.

DYE TRANSFER DISCLAIMER

Certain clothing and accessory dyes (such as those used on denim jeans) may migrate to lighter colors. This phenomenon is increased by humidity and temperature and is irreversible. Mayer Fabrics will not assume responsibility for dye transfer caused by external contaminants. Please check compatibility when using this product in combination with painted or varnished surfaces.

ADDITIONAL INFORMATION

Custom Colors: All patterns can be custom colored. Minimum yardage applies.

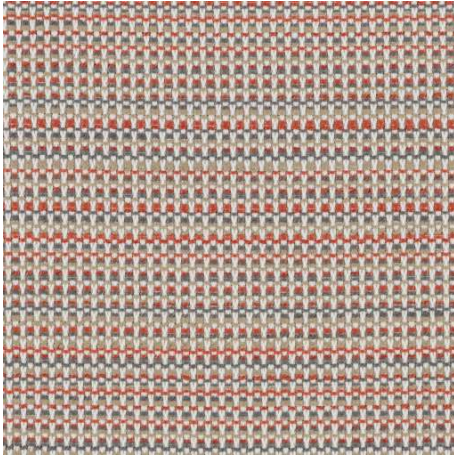
Digital Swatch Color Matching: Due to color variations on different monitors and color printers, actual swatch colors may vary slightly. Please request a memo sample from Mayer Fabrics to ensure proper color representation.

CLEANING & MAINTENANCE

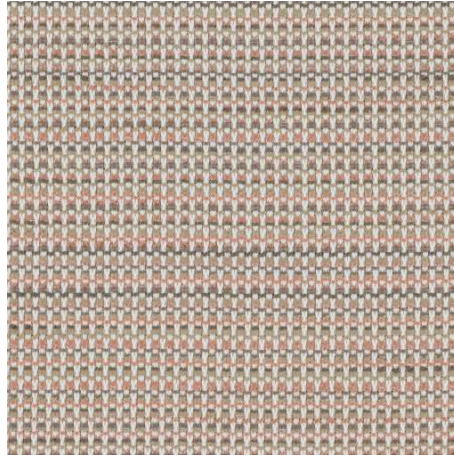
W: Water-Based Cleaner - Spot clean, using the foam only from a water-based cleaning agent, such as a mild detergent or non-solvent upholstery shampoo product. Apply foam with a soft brush in a circular motion. Always rinse promptly with clean water. Vacuum when dry. Pretest small area before proceeding.

BC: Bleach Cleanable - 1 parts bleach, 9 parts water = 10% bleach, 90% water solution. Do not clean / disinfect fabric for longer than 10 minutes using the 10% bleach solution. Always rinse promptly with clean water after applying the bleach solution. Failure to do so will void any and all warranties.

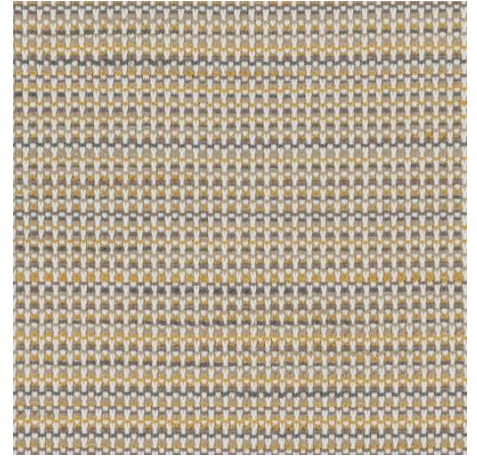
RIVIERA COLORS (9)



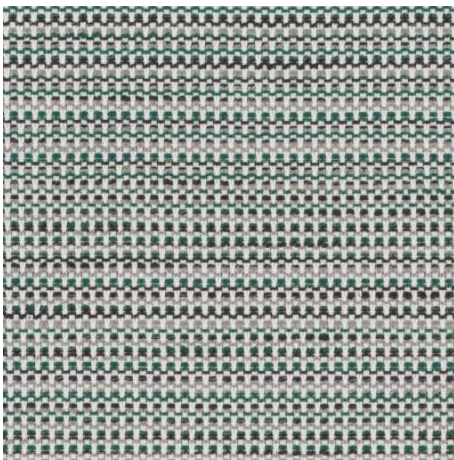
Coral
327-001



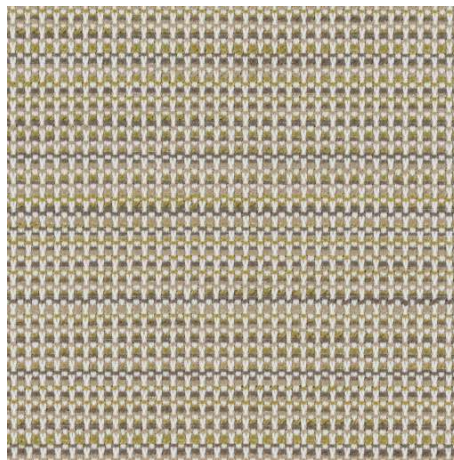
Petal
327-011



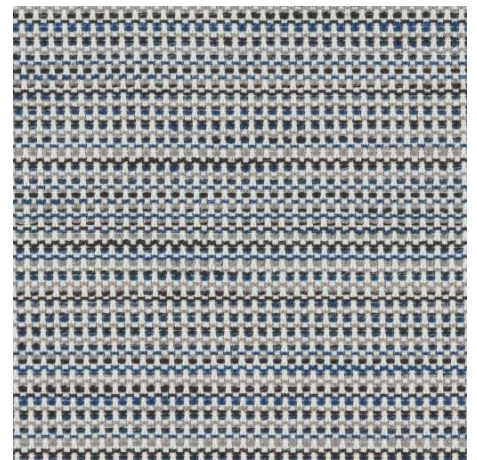
Gold Coast
327-002



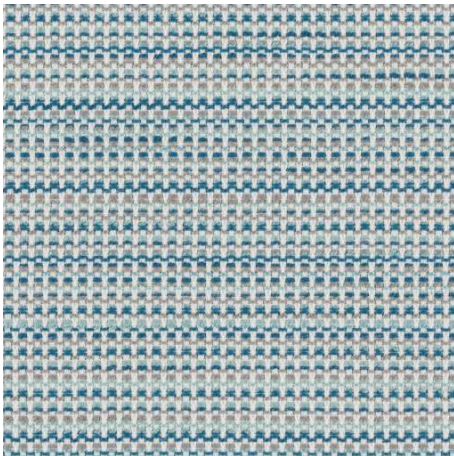
Jade
327-003



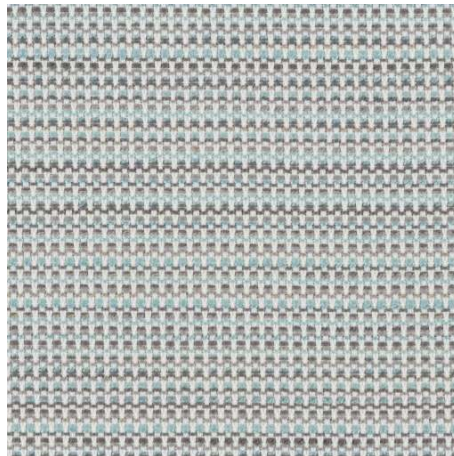
Kelp
327-013



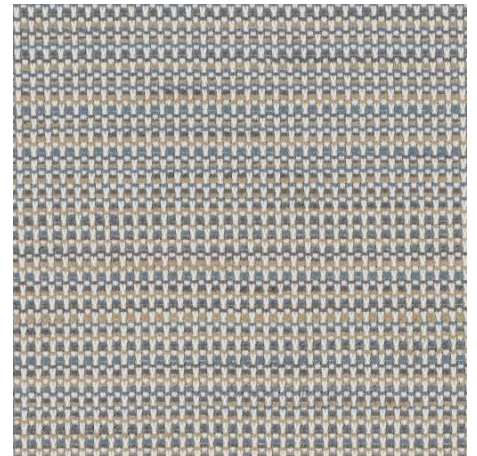
Baltic
327-004



Scuba
327-014



Daybreak
327-024



Shoreline
327-007