

AMALFI

325-006, Bedrock

[Getaway Collection](#)**TECHNICAL INFORMATION**

CATEGORY: Upholstery

CONTENT: 98% Recycled Olefin/2% Polyester

BACKING: Acrylic

FINISH: Stain Repellent - PFAS Free

WIDTH: 54"

WEIGHT: 16.9 oz./ln yd

VISUAL REPEAT: 5.25 in/13.34 cm H, 3 in/7.62 cm V

SHOWN RAILROADED: No

DIRECTIONAL: Yes

APPROX. ROLL SIZE: 38 yards

APPLICATION: Indoor / Outdoor / Atrium

PERFORMANCEABRASION RESISTANCE: Exceeds 100,000 Double Rubs*
(Wyzenbeek/Wire Screen)

BREAKING STRENGTH: Warp 334.0 / Fill 375.0

COLORFASTNESS TO CROCKING: Dry: Class 4 min/Wet: Class 4 min

COLORFASTNESS TO LIGHT: 1500 hours

PILLING RESISTANCE: Class 4.5

SEAM SLIPPAGE: Warp 35.0 / Fill 40.0

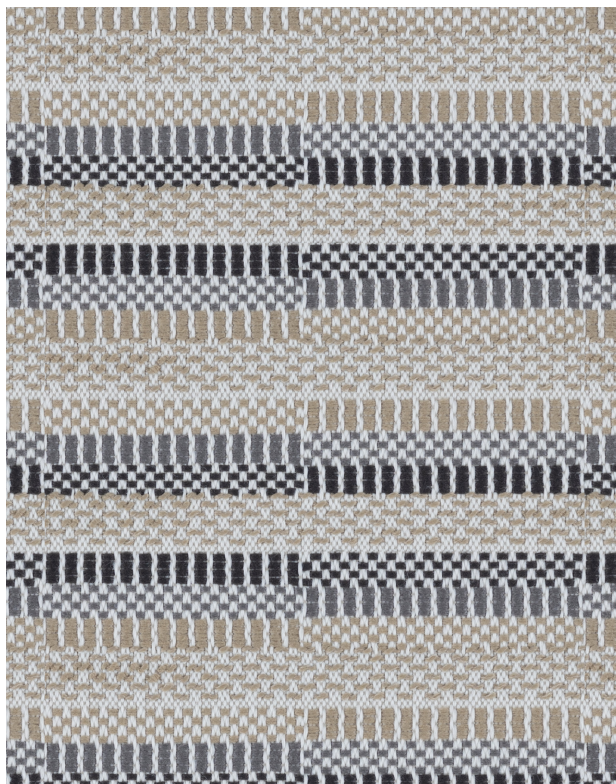
* Multiple factors affect fabric durability and appearance retention, including end-user application and proper maintenance.
Wyzenbeek results above 100,000 double rubs have not been shown to be an indicator of increased lifespan.

FLAMMABILITY

PASSES CAL TB 117-2013

NFPA 260/UFAC CLASS 1

AB 2998 COMPLIANT

**REDUCED ENVIRONMENTAL IMPACT**

GREENGUARD GOLD CERTIFIED

PFAS FREE

NO FR ADDITIVES

HHI / GREENHEALTH COMPLIANT

NO ANTIMICROBIAL ADDITIVES

NO ANTIBACTERIAL ADDITIVES

MINDFUL MATERIALS COMPLIANT

BPA FREE

OEKO-TEX STANDARD 100

FORMALDEHYDE FREE

PROP 65 COMPLIANT

REACH COMPLIANT

ROHS COMPLIANT

DOES NOT CONTAIN CONFLICT MINERALS

WARRANTY

STANDARD UPHOLSTERY | '5' FIVE YEAR WARRANTY
See [Warranty Terms](#) for more information.

DYE TRANSFER DISCLAIMER

Certain clothing and accessory dyes (such as those used on denim jeans) may migrate to lighter colors. This phenomenon is increased by humidity and temperature and is irreversible. Mayer Fabrics will not assume responsibility for dye transfer caused by external contaminants. Please check compatibility when using this product in combination with painted or varnished surfaces.

ADDITIONAL INFORMATION

Custom Colors: All patterns can be custom colored. Minimum yardage applies.

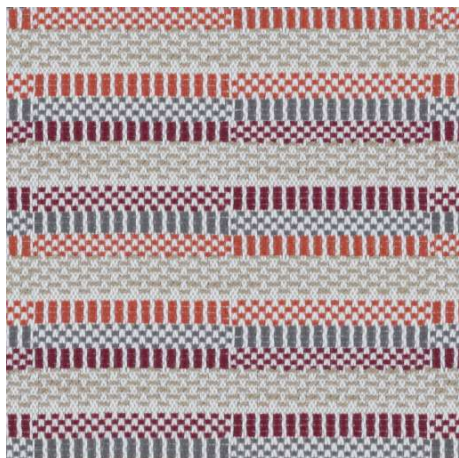
Digital Swatch Color Matching: Due to color variations on different monitors and color printers, actual swatch colors may vary slightly. Please request a memo sample from Mayer Fabrics to ensure proper color representation.

CLEANING & MAINTENANCE

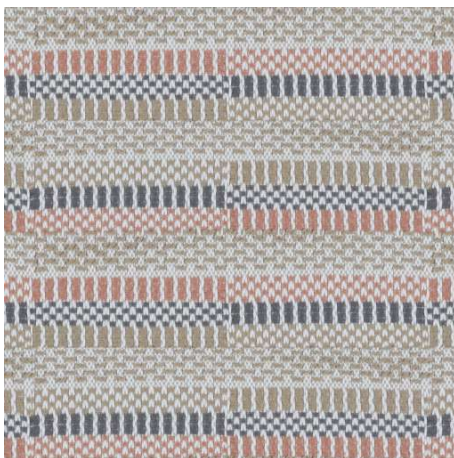
W: Water-Based Cleaner - Spot clean, using the foam only from a water-based cleaning agent, such as a mild detergent or non-solvent upholstery shampoo product. Apply foam with a soft brush in a circular motion. Always rinse promptly with clean water. Vacuum when dry. Pretest small area before proceeding.

BC: Bleach Cleanable - 1 parts bleach, 9 parts water = 10% bleach, 90% water solution. Do not clean / disinfect fabric for longer than 10 minutes using the 10% bleach solution. Always rinse promptly with clean water after applying the bleach solution. Failure to do so will void any and all warranties.

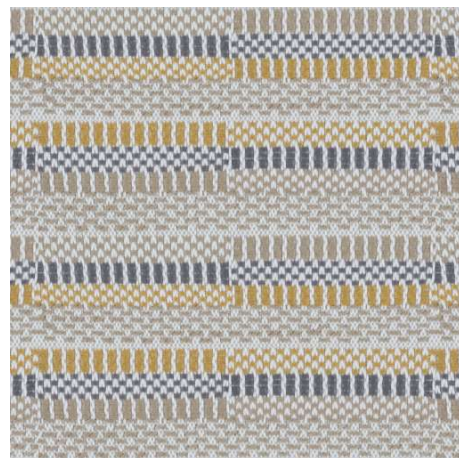
AMALFI COLORS (9)



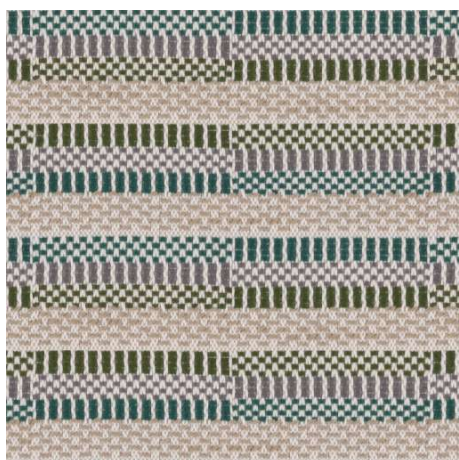
Vineyard
325-001



Rosy
325-011



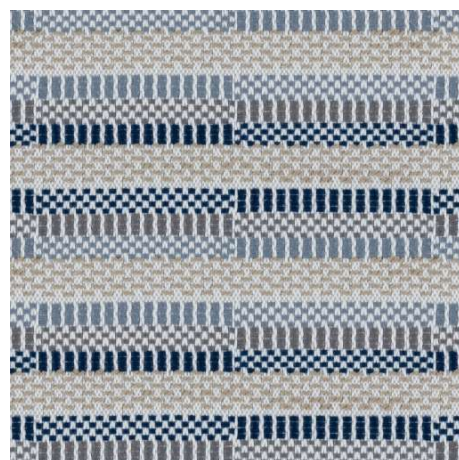
Beachcomber
325-002



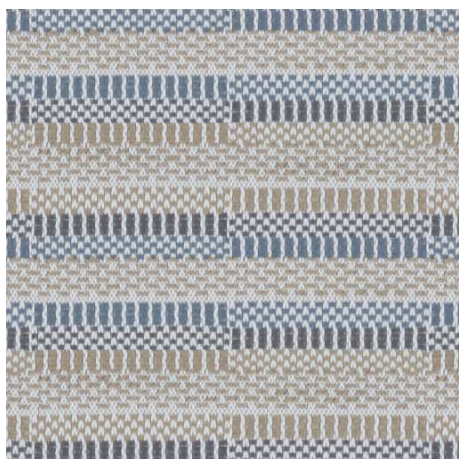
Grove
325-003



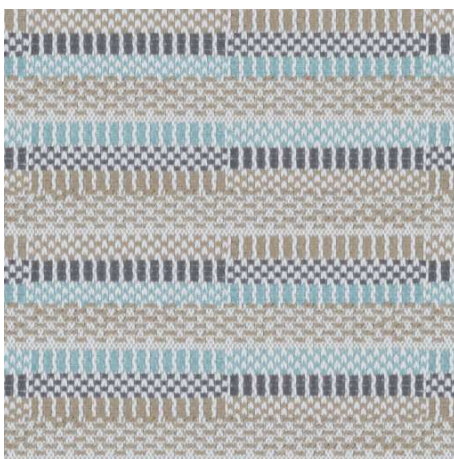
Garden
325-013



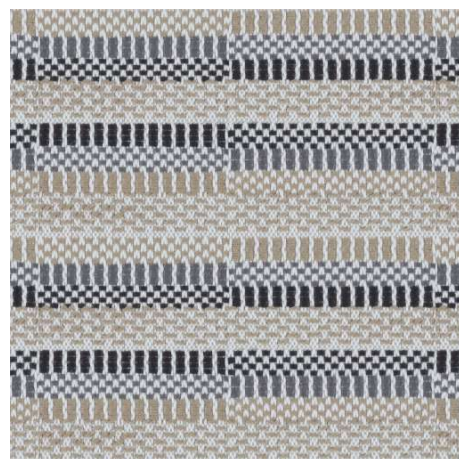
Waterfall
325-004



Shoreline
325-014



Breeze
325-024



Bedrock
325-006