

DAZZLE

319-004, Sapphire

TECHNICAL INFORMATION

CATEGORY: Upholstery
 CONTENT: 95% Recycled Polyester (6% Pre-/89% Post-Consumer)/5% Polyester
 BACKING: Acrylic
 FINISH: Stain Repellent
 WIDTH: 54"
 WEIGHT: 11.25 oz./ln yd
 VISUAL REPEAT: 0.14 in/0.36 cm H, 0.13 in/0.33 cm V
 SHOWN RAILROADED: No
 DIRECTIONAL: Yes
 APPROX. ROLL SIZE: 60 yards

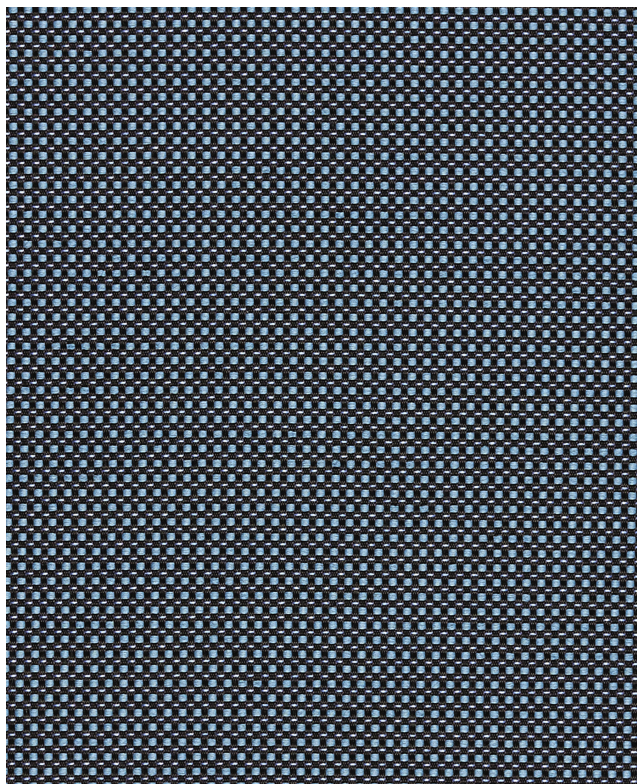
PERFORMANCE



ABRASION RESISTANCE: Passes 80,000 Double Rubs (Wyzenbeek/Cotton Duck)
 BREAKING STRENGTH: Warp 190.0 / Fill 312.0
 COLORFASTNESS TO CROCKING: Dry: Class 4 min/Wet: Class 4 min
 COLORFASTNESS TO LIGHT: 60 hours
 PILLING RESISTANCE: Class 4
 SEAM SLIPPAGE: Warp 120.0 / Fill 54.0

FLAMMABILITY

PASSES CAL TB 117-2013
 NFPA 260/UFAC CLASS 1
 AB 2998 COMPLIANT
 ASTM E84 CLASS 1 OR A (UNADHERED)
 MAY COMPLY WITH CAL. TECH. BUL. 133 WHEN COMBINED WITH APPROPRIATE COMPONENTS.



REDUCED ENVIRONMENTAL IMPACT

GREENGUARD GOLD CERTIFIED
 MILLED IN AMERICA
 DOES NOT CONTAIN CONFLICT MINERALS

WARRANTY

STANDARD UPHOLSTERY | '5' FIVE YEAR WARRANTY
See [Warranty Terms](#) for more information.

DYE TRANSFER DISCLAIMER

Certain clothing and accessory dyes (such as those used on denim jeans) may migrate to lighter colors. This phenomenon is increased by humidity and temperature and is irreversible. Mayer Fabrics will not assume responsibility for dye transfer caused by external contaminants. Please check compatibility when using this product in combination with painted or varnished surfaces.

ADDITIONAL INFORMATION

Custom Colors: All patterns can be custom colored. Minimum yardage applies.

Digital Swatch Color Matching: Due to color variations on different monitors and color printers, actual swatch colors may vary slightly. Please request a memo sample from Mayer Fabrics to ensure proper color representation.

CLEANING & MAINTENANCE

WS: Water/Solvent Cleaner - Spot clean with a mild solvent, an upholstery shampoo, or the foam from a mild detergent. When using a solvent or dry cleaning product, follow instructions carefully and clean only in a well-ventilated room. Avoid any product that contains carbon tetrachloride or other toxic materials. With either method, pretest a small area before proceeding. Always rinse promptly with clean water.