

ELEMENT

316-008, Plum

TECHNICAL INFORMATION

CATEGORY: Upholstery
 CONTENT: 85% Recycled Polyester/85% Pre-Consumer Recycled Polyester/15% Polyester
 BACKING: None
 FINISH: INCASE™ with Antimicrobial Silver Ion Technology
 WIDTH: 54"
 WEIGHT: 13 oz./ln yd
 SHOWN RAILROADED: No
 DIRECTIONAL: Yes
 APPROX. ROLL SIZE: 60 yards

PERFORMANCE

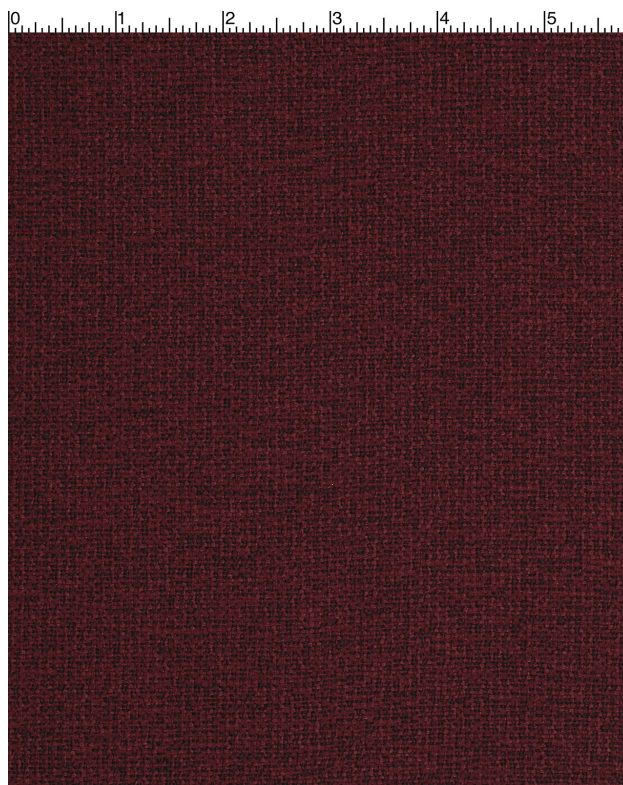


ABRASION RESISTANCE: Passes 130,000 Double Rubs*
 (Wyzenbeek/Cotton Duck)
 BREAKING STRENGTH: Warp 311.0 / Fill 213.0
 COLORFASTNESS TO CROCKING: Dry: Class 4/Wet: Class 3.5
 COLORFASTNESS TO LIGHT: 60 hours
 PILLING RESISTANCE: Class 5
 SEAM SLIPPAGE: Warp 86.0 / Fill 75.0

* Multiple factors affect fabric durability and appearance retention, including end-user application and proper maintenance. Wyzenbeek results above 100,000 double rubs have not been shown to be an indicator of increased lifespan.

FLAMMABILITY

PASSES NFPA 260/UFAC CLASS 1
 AB 2998 COMPLIANT
 CAL 117 SECTION E



REDUCED ENVIRONMENTAL IMPACT

GREENGUARD GOLD CERTIFIED
 DOES NOT CONTAIN CONFLICT MINERALS
 MILLED IN AMERICA

WARRANTY

STANDARD UPHOLSTERY | '5' FIVE YEAR WARRANTY
See [Warranty Terms](#) for more information.

DYE TRANSFER DISCLAIMER

Certain clothing and accessory dyes (such as those used on denim jeans) may migrate to lighter colors. This phenomenon is increased by humidity and temperature and is irreversible. Mayer Fabrics will not assume responsibility for dye transfer caused by external contaminants. Please check compatibility when using this product in combination with painted or varnished surfaces.

ADDITIONAL INFORMATION

Custom Colors: All patterns can be custom colored. Minimum yardage applies.

Digital Swatch Color Matching: Due to color variations on different monitors and color printers, actual swatch colors may vary slightly. Please request a memo sample from Mayer Fabrics to ensure proper color representation.

CLEANING & MAINTENANCE

WS: Water/Solvent Cleaner - Spot clean with a mild solvent, an upholstery shampoo, or the foam from a mild detergent. When using a solvent or dry cleaning product, follow instructions carefully and clean only in a well-ventilated room. Avoid any product that contains carbon tetrachloride or other toxic materials. With either method, pretest a small area before proceeding. Always rinse promptly with clean water.