

SPACER MESH

301-024, Sapphire

TECHNICAL INFORMATION

CATEGORY: Upholstery

CONTENT: 100% Polyester

BACKING: None

FINISH: None

WIDTH: 54"

WEIGHT: 16 oz./ln yd

SHOWN RAILROADED: No

DIRECTIONAL: Yes

APPROX. ROLL SIZE: 46 yards

PERFORMANCE



ABRASION RESISTANCE: Exceeds 1,002,000 Double Rubs*
(Wyzenbeek/Cotton Duck)

BREAKING STRENGTH: Warp 129.0 / Fill 78.0

COLORFASTNESS TO CROCKING: Dry: Class 4 min/Wet: Class 4 min

COLORFASTNESS TO LIGHT: 40 hours

PILLING RESISTANCE: Class 4.5

* Multiple factors affect fabric durability and appearance retention, including end-user application and proper maintenance.
Wyzenbeek results above 100,000 double rubs have not been shown to be an indicator of increased lifespan.

FLAMMABILITY

PASSES CAL TB 117-2013

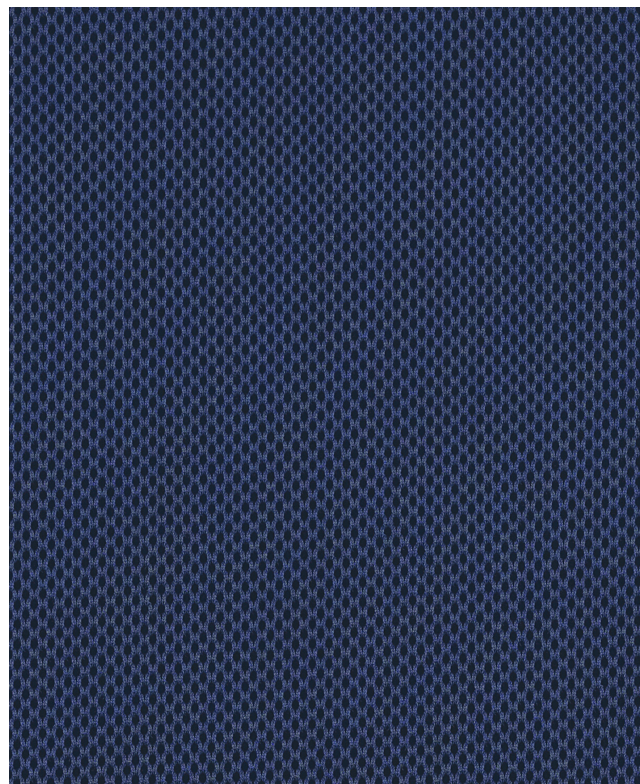
NFPA 260/UFAC CLASS 1

AB 2998 COMPLIANT

ASTM E84 CLASS 1 OR A (UNADHERED)

CAL 117 SECTION E

FMVSS 302



REDUCED ENVIRONMENTAL IMPACT

GREENGUARD GOLD CERTIFIED

PFAS FREE

NO FR ADDITIVES

HHI / GREENHEALTH COMPLIANT

NO ANTIMICROBIAL ADDITIVES

MINDFUL MATERIALS COMPLIANT

NO ANTIBACTERIAL ADDITIVES

PROP 65 COMPLIANT

DOES NOT CONTAIN CONFLICT MINERALS

WARRANTY

STANDARD UPHOLSTERY | '5' FIVE YEAR WARRANTY
See [Warranty Terms](#) for more information.

DYE TRANSFER DISCLAIMER

Certain clothing and accessory dyes (such as those used on denim jeans) may migrate to lighter colors. This phenomenon is increased by humidity and temperature and is irreversible. Mayer Fabrics will not assume responsibility for dye transfer caused by external contaminants. Please check compatibility when using this product in combination with painted or varnished surfaces.

ADDITIONAL INFORMATION

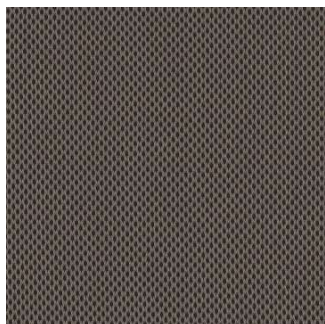
Custom Colors: All patterns can be custom colored. Minimum yardage applies.

Digital Swatch Color Matching: Due to color variations on different monitors and color printers, actual swatch colors may vary slightly. Please request a memo sample from Mayer Fabrics to ensure proper color representation.

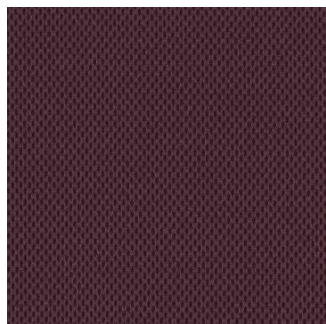
CLEANING & MAINTENANCE

WS: Water/Solvent Cleaner - Spot clean with a mild solvent, an upholstery shampoo, or the foam from a mild detergent. When using a solvent or dry cleaning product, follow instructions carefully and clean only in a well-ventilated room. Avoid any product that contains carbon tetrachloride or other toxic materials. With either method, pretest a small area before proceeding. Always rinse promptly with clean water.

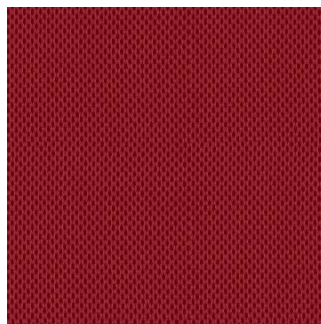
SPACER MESH COLORS (14)



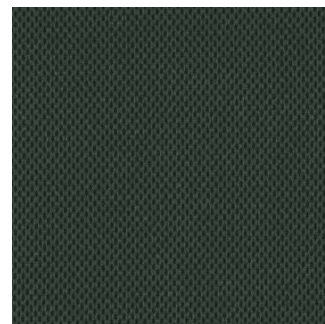
Mocha
301-000



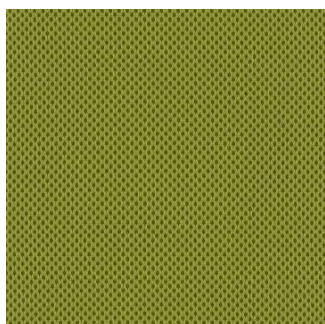
Wine
301-001



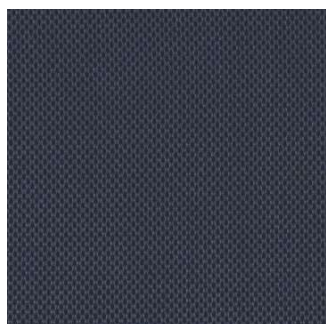
Paprika
301-011



Hunter
301-003



Limelight
301-013



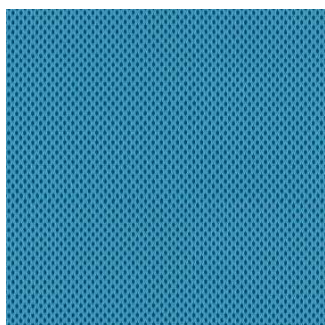
Ink
301-004



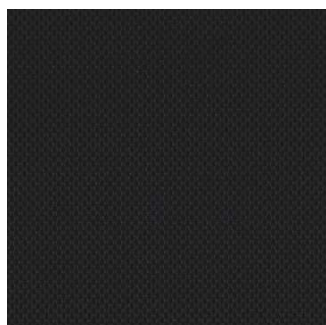
Sky
301-014



Sapphire
301-024



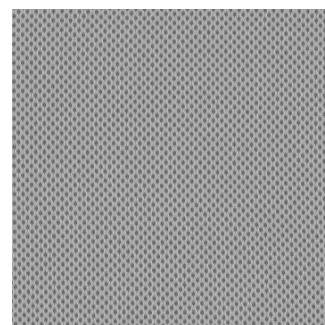
Caribbean
301-034



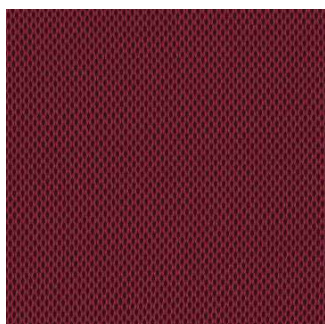
Black
301-006



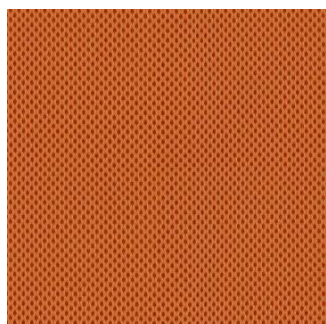
Pewter
301-016



Sterling
301-026



Cayenne
301-009



Marigold
301-019